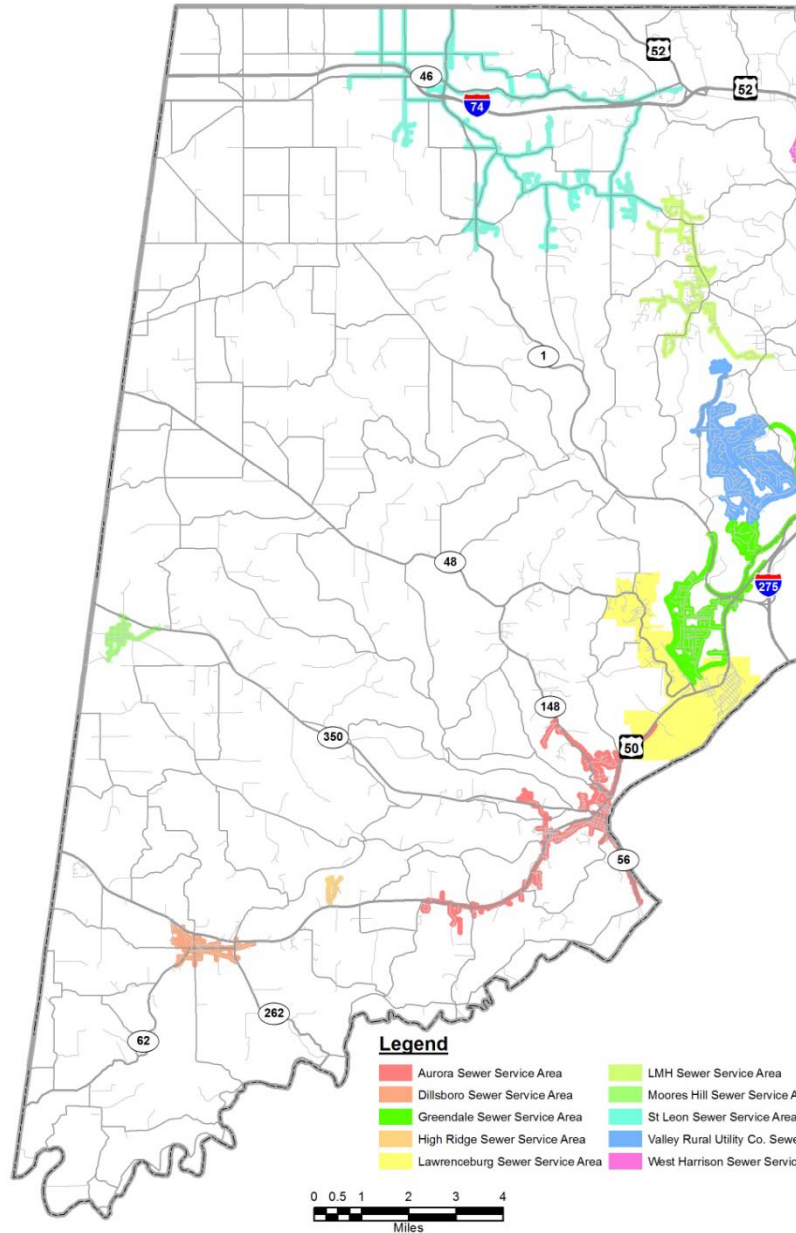


Population Projections Update

Travis Miller, OKI



Approximate Sewer Service Areas Dearborn County, IN



Existing Approximate Wastewater Service Areas

Based on areas within
300' of sewer line center

*Lawrenceburg lines not included – area served
based on corporate limits*



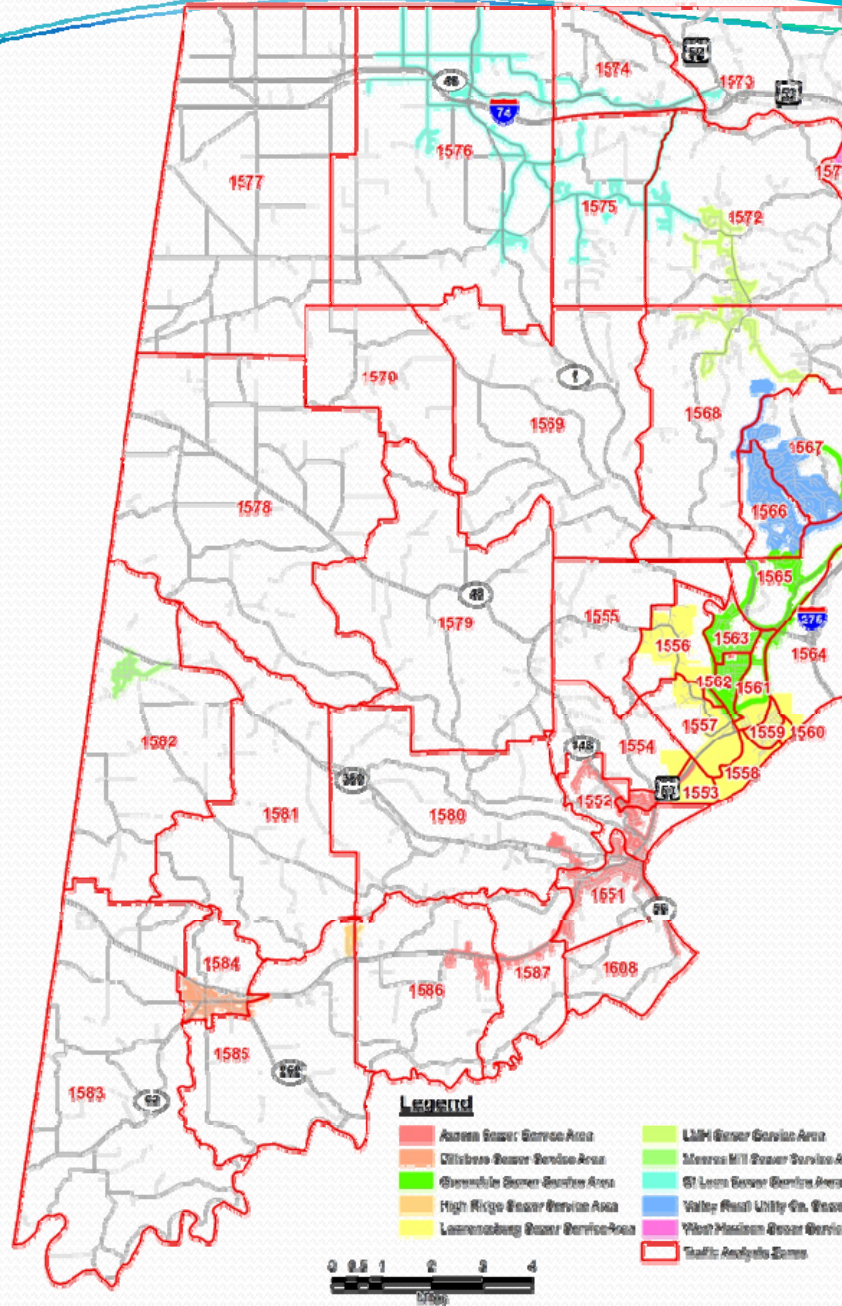
Address Points within Existing Wastewater Service Areas

Wastewater Facility	WWTP Design Capacity (MGD)	WWTP Average Flow (MGD) - 2010	Estimated Connection Points	WWTP Estimated Flow (MGD) 2010 (400 gpd/Connection)
Dillsboro	.17 (expanding to .5)	0.1495	449 (507)	0.1796
Moores Hill	.105 (expanding to .2)	0.0400	223 (220)	0.0892
South Dearborn Regional*	6.0	3.6000	6484	2.5936
Harrison (Dearborn portion)	uncalculated	uncalculated	96	0.0384
Highridge	0.02	unknown	47	0.0188
St. Leon	0.300	0.210	744	0.2976
LMH	0.500	.293 (max)	853	0.3412

- SDRSD estimate includes:
 - Aurora at 1514
 - Greendale at 1732
 - Lawrenceburg at 1495
 - VRUC at 1743



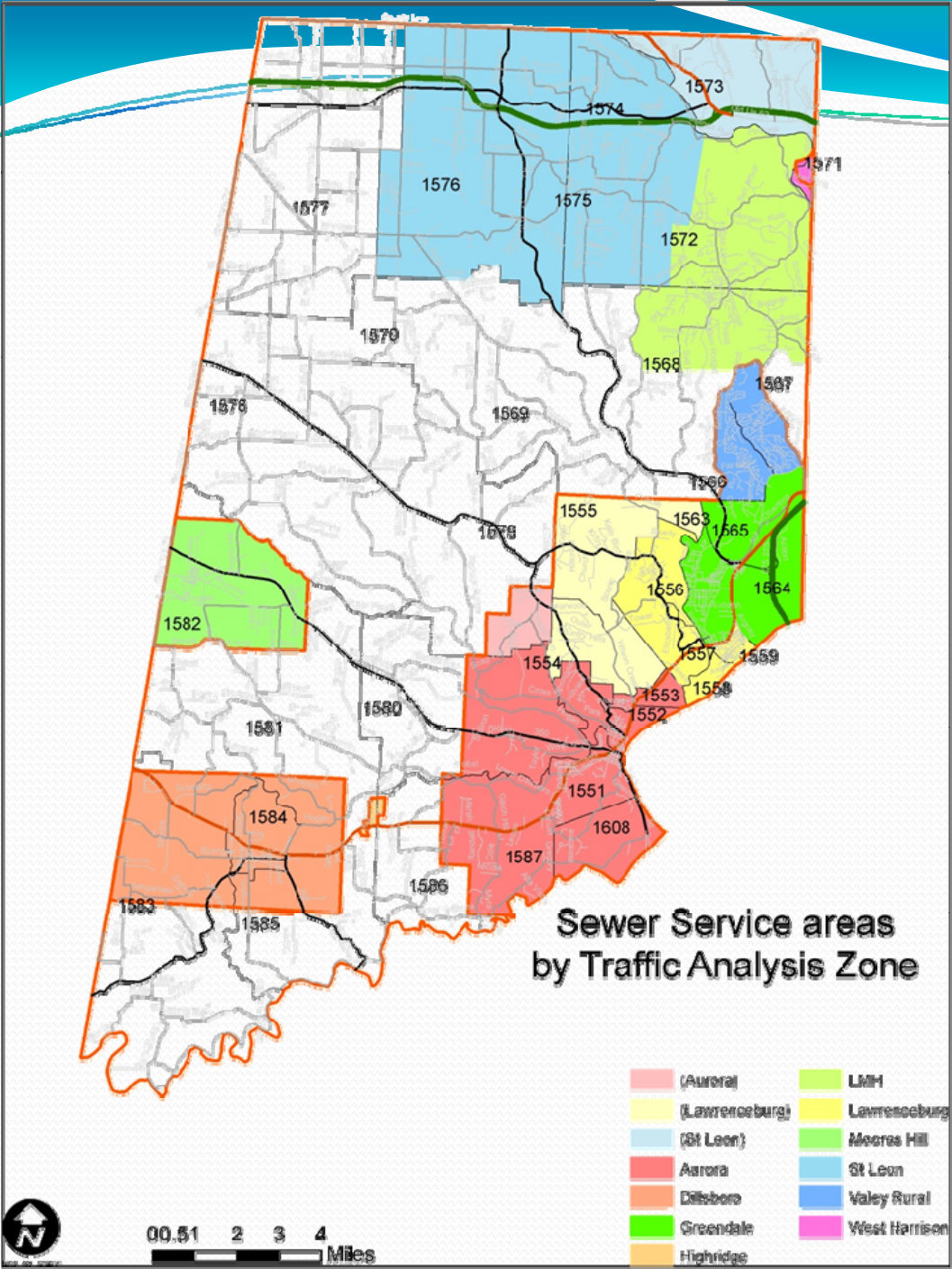
Approximate Sewer Service Areas
Dearborn County, IN

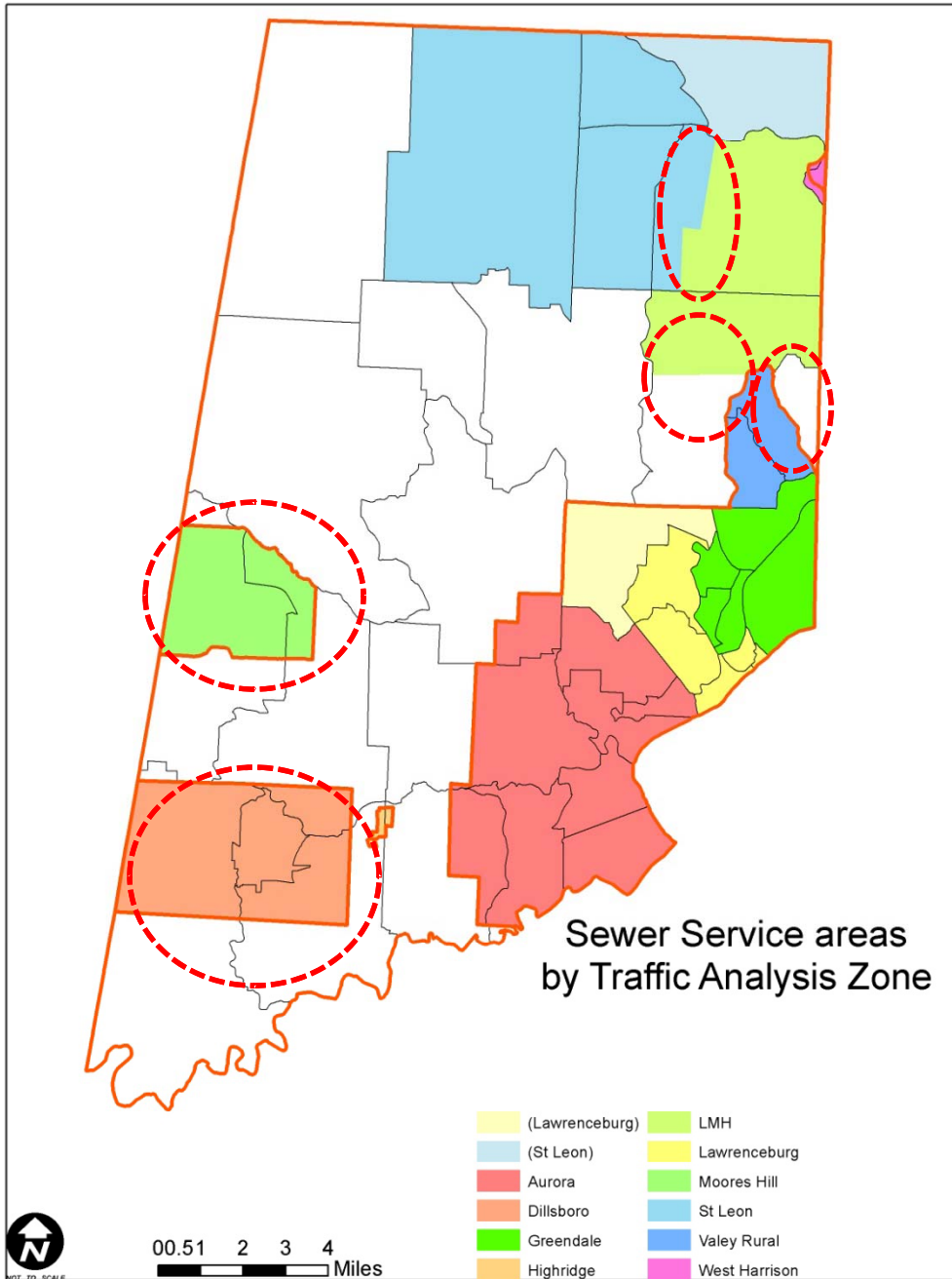


Traffic Analysis Zones (TAZ)



TAZs of Existing Service Areas





TAZs of Existing Service Areas



Projections for Approximate Service Areas (using TAZ data)

Wastewater Facility Planning Area	Size in Acres	WWTP Design Capacity (MGD)	WWTP Average Flow - 2010	2010 Population	2010 House holds	WWTP Estimated Flow - 2010 (400 gpd/HH)	2020 Population	2020 House holds	WWTP Estimated Flow - 2020 (400 gpd/HH)	2030 Population	2030 House holds	WWTP Estimated Flow - 2030 (400 gpd/HH)
Dillsboro	10,626	.17 (exp. to 0.5)	0.1495	2,396	950	0.3802	2,539	1048	0.4192	2,614	1111	0.4443
Moores Hill	5,836	.105 (exp. to 0.2)	0.0400	1,876	665	0.2662	1,887	702	0.2807	1,848	714	0.2858
South Dearborn Regional	35,481	6.0	3.6000	22,178	9073	3.6290	23,399	10093	4.0370	24,024	10761	4.3043
Highridge	162	0.02		94		0.0000	101		0.0000	106		0.0000
Wastewater Facility w/o FPA												
St. Leon	34,094	0.300	0.210	6692.5	2389.5	0.9558	7184	2630.5	1.0522	7475	2785.5	1.1142
LMH	8,991	0.500	.293 (max)	4230	1497	0.5988	4429	1655	0.662	4506.5	1757	0.7028

