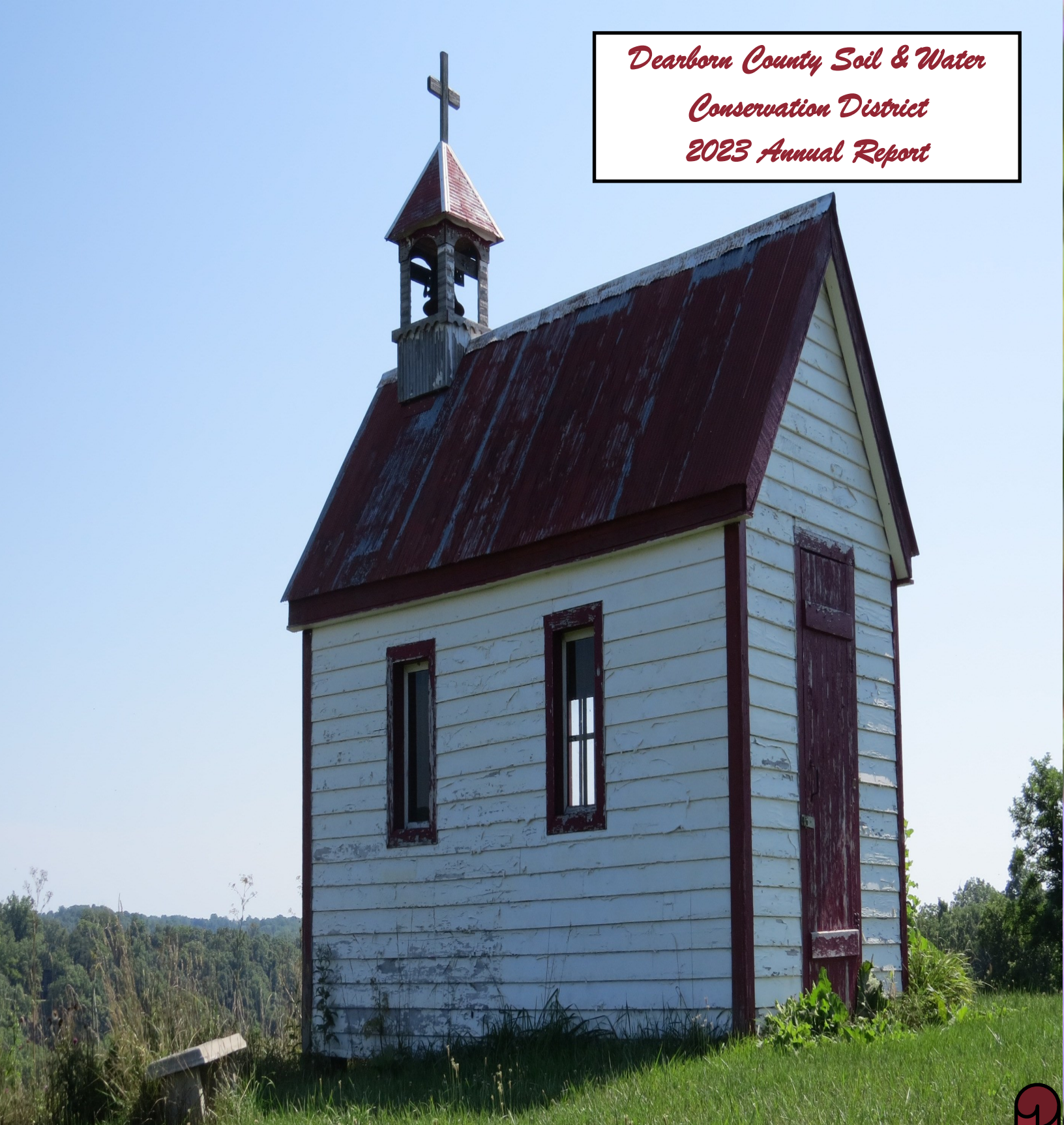


*Dearborn County Soil & Water  
Conservation District  
2023 Annual Report*



**The Dearborn County Soil and Water Conservation District Mission Statement:  
Promote use of natural resources through technical assistance and education.  
Dearborn County SWCD & USDA are Equal Opportunity Providers, Employers, and  
Lenders.**

Photo by Beth Terrill



Seated are Supervisors, left to right, Tom Gaynor, Chris Powell, Ken Gunkel, Matthew Johnson and John Kruse. Standing are Associates, Eric Callahan, Tom Klump, Dan Kemper, Pat Holland, George Bley and Robert Schroeder.

Ken Gunkel—Chairman	Robert Schroeder—Associate
Matthew Johnson—Vice Chair	Tom Klump—Associate
John Kruse—Supervisor	Kim Wolfert—Associate
Tom Gaynor—Supervisor	Eric Callahan—Associate
Chris Powell—Supervisor	John & Jane Lech—Associates
Pat Holland—Associate	Brad Dawson—Associate
Dan Kemper—Associate	George Bley—Associate

Aurora USDA Service Center  
10729 Randall Ave, Suite 2  
Aurora, IN 47001  
812-926-2406 Ext. 3

[www.dearbornswcd.org](http://www.dearbornswcd.org)  
[facebook.com/dearborncountyswcd](https://facebook.com/dearborncountyswcd)

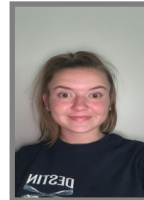
Office Hours  
Monday — Friday  
8:00 — 4:00  
Due to the nature of our work  
there will be times the office is  
closed, please call before  
making a special trip.

## STAFF



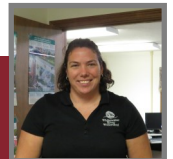
**Beth Terrill**  
District Coordinator

**Vickie Riggs**  
Educator/Technician



**Kyla Dick**  
Storm Water Coordinator

**Heather Wirth**  
Watershed Coordinator



**Matt Jarvis**  
NRCS District Conservationist

**Alejandra González-López**  
NRCS Soil Conservationist



## CALENDAR OF EVENTS

<b><u>January</u></b> -IASWCD Annual Conference	<b><u>February</u></b> -Native Plant Sale Order Forms Available	<b><u>March</u></b> -Annual Meeting	<b><u>April</u></b> -Tree Giveaway -Native Plant Sale Orders Due	<b><u>May</u></b> -Native Plant Sale pickup	<b><u>June</u></b>
<b><u>July</u></b>	<b><u>August</u></b> -Pasture Field Day	<b><u>September</u></b> Ag Day	<b><u>October</u></b>	<b><u>November</u></b> -Tillage Breakfast	<b><u>December</u></b>

Please watch for the dates of these events to be announced. Additional workshops and field days may be added throughout the year. This calendar is tentative and dates may change.

2024 Monthly Board Meetings will be held on the 2nd Thursday of each month.



## Chapel Information

This chapel sits on the hill off of SR 1 and was built by the family and friends of Ron Allen starting in January of 2015. It was built using original timbers from the old farmhouse on the property after a tree fell on the back kitchen. The chapel was completed in May of 2015 and a bell was installed in the tower.

The chapel has been used to celebrate family get togethers, Christmas Day and other holidays. It stands as a testament of the Allen's family faith, love of God, and all of his beautiful creations!



## Snippet about Dearborn County SWCD...

The Dearborn County Soil & Water Conservation District (SWCD) was established in 1957 and is a legal government subdivision of the State of Indiana that works at the grassroots level to provide leadership for all conservation developments. The SWCD district is managed by a board of five supervisors, three are elected and two are appointed, who own land in the county. The board is also made up of associate supervisors, who aren't elected or appointed and cannot vote, but provide important input to the elected or appointed supervisors.

Dearborn County SWCD works closely with many partners: Natural Resources Conservation Service, Farm Service Agency, Purdue Extension, Indiana Department of Natural Resources, Indiana Department of Environmental Management, U.S. Army Corps of Engineers, to provide services to the landowners. Thanks to these partnerships the SWCD can offer high levels of conservation services to the landowners in Dearborn County. The staff is passionate about helping landowners learn about and install best management practices that will have a positive impact on the environment and natural resources.

To educate the community about the positive impact they can make in the district, Dearborn County SWCD host several outreach and educational events throughout the year for adults and youth. These events help create awareness and education to the public. Some of the events held include: a cover crop field day, soil health field day, rain barrel workshop, AG day, a peanut workshop, and a conservation tillage breakfast. Another way the SWCD provides awareness is by e-newsletters, articles, social media, and flyers. Dearborn County SWCD also provides free soil, hay, pasture, and garden testing for Dearborn County landowners.

The SWCD board, staff, and partners are making it possible for the Dearborn County Soil and Water Conservation District to make a difference and better the environment for the community and our future generations. If you are interested in one of our programs, please contact us. As a reminder, due to the nature of our work there will be times the office is closed, please call before making a special trip to the office.



## **EQIP & CSP Installed Conservation Practices 2023**



Access Control	16 acres
Access Road	150 feet
Brush Management	254 acres
Brush Management w/wildlife enhancement-	158 acres
Conservation Cover	1 acre
Conservation Crop Rotation	1,238 acres
Cover Crop Rotation	14 acres
Fence	11,504 feet
Forest Management Enhancement -	27 acres

Forest Stand Improvement	27 acres
Grassland Conservation	103 acres
Heavy Use Protection (HUAP)	17,715 sq ft
Herbaceous Weed Treatment	1 acre
Livestock Pipeline	2,322 feet
Pasture and Hay Land Planting	62 acres
No-Till Residue Management	561 acres
Reduce Tillage Residue Management-	1,475 acres
Roof Runoff Structure	2
Structures for Wildlife	1
Subsurface Drain	263 feet
Tree Planting	1 acre
Tree Site Preparation	1 acre
Underground Outlet	16 feet
Watering Facility	16
Wildlife Habitat Planting	2 acres

There were Conservation Plans written for 1,586 acres. Landowners received \$92,975.00 in financial assistance to install conservation practices through Dearborn County SWCD and Natural Resources Conservation Service.





# Forestry Field Day



A Forestry Field Day was held on August 18, 2023 from 9:00—2:00 at Echo Hill Farms in Memory of Deb Schroeder.

Jason Utley, IDNR District Forester spoke on Invasive & Tree ID, Tree Selection and Forestry Management.

Jason Utley, IDNR District Forester



Matthew Johnson—  
Dynamic Land Enhancements

Matthew Johnson of  
Dynamic Land Enhancements  
gave a live demonstration on  
brush management.

A free lunch was provided by  
The House of Brisket for the 97  
people that were in attendance  
for the field day.



Mikey  
& Rocky

## Soil & Hay Testing

The Soil and Water Conservation District paid for 174 soil tests for 77 landowners. These samples consisted of testing for: gardens, pastures/hay lands, lawns, cover crops, shrubs, trees, flowers, pollinators and orchards. A total of \$2,736.97 was spent on these activities this past year which included totals of 71 Garden, 20 Lawn, 46 Hay Land, 21 Pasture Land, 2 Orchards, 1 Flower, 13 Trees, cover crops, misc.

The tests can assist in proper nutrient management of your land and feed value, which can save you money by applying/adding only what is needed. The SWCD has a soil probe, hay probe, and tree spade for loan, free of charge to Dearborn County landowners. If you need a soil test/forage test contact the office at 812-926-2406 Ext 3.



## Equipment For Rent

Great Plains 7 ½' No-Till Drill has three seed boxes which can be used for hay/pasture land, warm season grasses, and small grains. The Brillion Seeder has two boxes and works excellent for seeding new alfalfa stands and other legumes or grasses. A 50 HP tractor with hydraulics is needed for use with either piece of equipment. Rental fee is \$8.00/Ac. (minimum \$50.00). Call the office two to three days ahead of time to reserve, or for more information at (812) 926-2406 ext. 3.



## 2023 Equipment Rental Totals

### No-Till Drill

\$2,504.40— Income

25—Landowners

72.3 Acres Soybeans/Cover Crops

11.6 Acres Alfalfa

60.9 Acres Mixed Hay

44 Acres Orchard Grass/Teff

80.3 Acres WSG/Pollinators

39.3 Acres Pasture Mix

### Brillion Seeder

\$923.20—Income

9—Landowners

97.2 Acres Alfalfa

6.4 Acres Hay Mix

6.6 Acres Pasture Mix

110.2 —Total Acres



## Outreach & Training

Approximately 115 people were in attendance for the Annual SWCD Conservation Tillage Meeting was held at Agner Hall on November 9. Xperience Ag from Greensburg was on hand demonstrating their drones and gave a brief presentation on maximizing a farms potential with the latest Ag Technology products along with exceptional support.

Jeff Hermes, Purdue Extension Ag and Natural Resources Educator was on hand to give a presentation on State Pesticide Regulation Updates. Rolling Pin provided breakfast to the attendees and more than 50 door prizes were given to those in attendance.



Mrs. Andrew's FFA class  
from SDHS joined the event.



## OKI Tour

The OKI Conservation Tour was held on September 22 and involved several local farms and businesses including Kaiser Pickle Plant, Scenic View Farm, Hall Farm and Lobenstein's Farm. Eight Top Grill Restaurant provided the meal for the group and transportation was provided by KP Bussing.



Scenic View Farm—Wes Booker



Large Straw Bales inventory at Hall Farms

## **Dearborn County SWCD River Friendly Farmer Recipients**

**We are very pleased to recognize Tom & Libby Klump and Wes & Mary Booker as the Dearborn County 2023 River Friendly Farmers!**

Tom and Libby Klump of Misty Acres Farm have installed 40 solar panels which supplies 60-80% of power to their farm. They practice rotational grazing and also installed heavy use area protection pads along with automatic watering systems. The Klumps have also started nutrient testing on their hay and soil and reuses all animal waste to fertilize their fields.



# Congratulations!



Wes and Mary Booker of Scenic View Farms moved on to their 97 acre farm in 1971 starting out with only 3 or 4 cows but began constructing spring developments. The Bookers have been practicing sustainability on their farm for over 50 years and are committed to protecting Indiana's natural resources through their conservation management practices. They currently have 35 head of cattle and 33 feeder calves.



## Dearborn County SWCD Friend of Conservation Awards

### John & Jane Lech

John and Jane have been partnering with the Soil & Water Conservation office since 2006. They have participated in the Wildlife Habitat Development (WHIP) and the Early Successional Habitat Development in 2007 implemented Woodland Edge Feathering (2.3 acres), Inter-Seeding Forbs (1.0 acres), Prescribed Burn for Wildlife Enhancement (3.5 acres), Strip Disc to improve Wildlife Cover (1.7 acres), and Warm Season Grasses (3.5 acres.)

The couple also participated in Conservation Stewardship Program (CSP) in 2018, where they established 1 acre of Conservation Cover, 1 acre of Critical Area Planting and 0.5 acres of Monarch Habitat.

Plans for future practices in the CSP program began in 2022 to establish Structures for Wildlife (0.5 acres), Food Producing Trees and Shrubs (0.5 acres) and Wildlife Habitat Pollinator (0.5 acres). These practices will continue through 2027.

John and Jane are also Associate Supervisors on the Dearborn County Soil & Water Conservation Board and have volunteered their time to be on the Audit Committee. They are always the first to volunteer for other duties. They think the Dearborn County Soil and Water “folks are so helpful and knowledgeable.”



*Congratulations*

## Dearborn County SWCD Partnership Awards

**Alejandra Gonzalez-  
Lopez**



Alejandra González-López was born and raised in Caguas, Puerto Rico. She is passionate about agriculture and animals and loves working with both. For this reason, she decided to study agriculture. During her college years, she had the opportunity to do an Internship with NRCS in North Carolina and she considered it to be one of the best experiences she ever had. This excellent experience awakened the desire in her to work full time in the agency, along with helping people achieve their goals.

She was hired with NRCS full time as a Soil Conservationist a few years ago and is working on completing conservation planning certification. She has been able to assist with the farm bill in several surrounding counties and is great in developing workload process for the NRCS program.

She is an essential partner with the Dearborn County Soil & Water Conservation District team and always is willing to help with meetings, field days and events for the Soil and Water Conservation Team!





## Dearborn County SWCD Partnership Awards

### Cheryl Furnish

Cheryl is a program technician for the Dearborn/Ohio County Farm Services Agency. She started in 2023 after having worked for the Switzerland County Soil & Water Conservation District for 15 years.

Cheryl was born & raised in Cincinnati moving to Indiana when she married her husband, Rob. She was broken into farming in a dairy/tobacco operation where she developed her passion for farm life. They raised 3 daughters who were very active in 4-H and FFA.

Cheryl & Rob live on a small beef/sheep/forage farm in Switzerland County along with a couple horses (remaining 4H projects) and several chickens. She has been a huge asset in providing information for the Dearborn County Soil and Water Conservation District team!



## Ag Day

Dearborn County SWCD, and NRCS, were active in presenting to local 3rd graders for Ag Day!

Matt Jarvis, NRCS and Alejandra Gonzalez-Lopez, NRCS, presented acre demonstrations.

Kyla Dick, Stormwater Coordinator and Alejandra Gonzalez-Lopez, Soil Conservationist provided information on the importance of watersheds and demonstrated using the Enviroscope.





## Construction Site Run-off

The old "Rule 5" was replaced by IDEM (Indiana Department of Environmental Management) with the new Construction Stormwater General Permit in December of 2021. The requirements of the Construction Stormwater General Permit apply to all persons who are involved in construction activity (which includes clearing, grading, excavation and other land-disturbing activities) that results in the disturbance of one (1) acre or more of total land area. If the land-disturbing activity results in the disturbance of less than one (1) acre of total land area but is part of a larger common plan of development or sale, the project is still subject to storm water permitting.

## Municipal Separate Storm Sewer System

A municipal separate storm sewer system, also known as a MS4, is defined by the Indiana Department of Environmental Management as "a conveyance or system of conveyances owned by a state, city, town, or other public entity that discharges to waters of the United States and is designed or used for collecting or conveying stormwater. Dearborn County recently became an MS4 on April 13th of 2022 and is now required to obtain permit coverage under the Indiana Department of Environmental Management. The SWCD is actively working in collaboration with various county departments to achieve compliance. Lawrenceburg, Greendale, and Aurora are also new MS4s. In collaboration with the county we have formed a partnership called the GLAD Stormwater Collaborative. Be on the lookout for MS4 news and ordinances this April.

## Erosion Control Ordinance

The Dearborn County Erosion Control Ordinance is in place for the non-incorporated parts of the county. This ordinance requires any building project to minimize erosion and sedimentation potential and is enforced by the Building Department with technical assistance provided by the SWCD. The Building Department is the jurisdictional entity that will bring any project into compliance.

**2024  
Native  
Plant  
Order  
Forms  
Available  
Now!!**



### Aquilegia canadensis (Columbine)

Columbine enjoys areas of partial sun or partial shade. It will grow to a height of 2-3 feet with a spread of 1 foot. It prefers well drained soils, and will bloom in the months of May through June. It is non-aggressive, and a hummingbird attractor.

### Penstemon calycosus (Calico Penstemon)

Calico Penstemon is also a partial sun or partial shade plant. It blooms in the month of June with colors ranging white to purple. It will grow to a height of 2-3 feet and may have a spread up to 3 feet. It does best in well-drained soils, and is also a hummingbird attractor. It's generally not aggressive.



### Asclepias incarnata (Swamp Milkweed)

Marsh Milkweed is a full sun plant. Pink blooms will form July through August. It can grow to a height of 3-4 feet, with a spread of 2-3 feet. It prefers moist soils. It is deer resistant, and a staple for the Monarch Butterfly. It can be moderately aggressive.

### Dalea purpurea (Purple Prairie Clover)

Purple Prairie Clover is also a full sun plant. It's purple blooms can be spotted July through August. It will get to be 1-2 feet tall, with a spread of 1-2 feet. It does best in well-drained soils. It has the ability to fix nitrogen, and it provides pollinator support. It typically isn't aggressive, and if concerned, seed heads can be cut off in the fall.



### Sorghastrum nutans (Indian Grass)

Indian Grass does best in full sun, and moderately well-drained soils. It can grow to be 4-6 feet tall, with a spread of 1-2 feet. It seeds August through September. It will have to be cut back late each winter or early spring. It can become aggressive in small gardens.

Dearborn County SWCD 2024 Native Plant Sale

### Order Deadline is May 3rd, 2024

Orders available while supplies last, orders not paid for in advance cannot be guaranteed.  
After May 3rd, call 812-926-2406 ext. 3 before sending payment to guarantee we have those plants in stock.

Name of Plant	Quantity/ Number of Plugs	Cost Per Item	Total Cost
Aquilegia canadensis (Columbine)		\$2.50	
Penstemon calycosus (Calico Penstemon)		\$2.50	
Asclepias incarnata (Swamp Milkweed)		\$2.50	
Dalea purpurea (Purple Prairie Clover)		\$2.50	
Sorghastrum nutans (Indian Grass)		\$2.50	
Special Request:		Subtotal	
		7% Tax	
		Total	

If you need special arrangements or have questions, before ordering, contact us at:

812-926-2406 ext. 3 or  
Kyla.dick@in.nacdn.net

Mail this order form and payment to

Dearborn County SWCD  
10729 Randall Avenue  
Aurora, IN 47001

Name:			
Address:			
City:		Zip:	
Phone:			
Email:			
Day & Time of Pickup:			

## 2023 Tree Giveaway



The FFA students from East Central High School helped the Dearborn County SWCD board members, staff and Earth Team Volunteers participate in the 2023 Tree Giveaway, held at Bright Park. Approximately 600 trees were given away in exchange for a non-perishable food item or a monetary donation. Nearly \$100 was received and donated to the Dearborn County Park Board while the food that was collected was given to the Clearing House in Aurora and the North Dearborn Food Pantry.



## Whitewater River Watershed Project Update

The Whitewater River Watershed Project ended 2023 with the completion of its 2nd Implementation grant. The project is happy to announce the grant was very successful. The cost-share program helped landowners install best management practices (bmps) to reduce the amount of pollutants like sediment, nitrogen, Ecoli, and phosphorous from entering the streams. The following practices were installed during the grant period:

Fence – 22,892 ft	Hay Planting – 26.5 acres
Heavy Use Area – 40,762 sq ft	Pipeline – 615 ft
Underground Outlet – 1,542 ft	Water Tanks – 2 each
Animal Walkway – 2,125 sq ft	Cover Crops – 1,164.4 ac
Streambank Stabilization – 435 ft	Grassed Waterway – 1,560 ft
Mulching – 5,328 sq ft	Riprap Pad – 86 ft
Trickle Flow Collector – 1 each	Critical Area Planting – 1.5 ac

These practices being installed have resulted in the following pollutant load reductions:

Sediment – 9,026 T/yr    Phosphorus – 10,139 lbs/yr    Nitrogen – 20,300 lbs/yr

Over the grant period, the Whitewater River Watershed and its partners provided many educational opportunities for the public and landowners to learn about water quality and best management practices. The opportunities ranged from virtual workshop, in-person workshops, to articles in newsletters. Some of the topics covered were pasture renovation, hay quality, pond maintenance, soil health, cover crops, nutrient management, and much more.

The project will be starting a new 319 grant very soon to continue its efforts in implementing the Whitewater River Watershed Management Plan. The grant will contain funds to implement another cost-share program for the watershed area to install more best management practices. If you have any resource concerns on your land and would like to install a best management practice to address it, please contact Heather Wirth at 812-212-1066 or email [heather.wirth@in.nacdnet.net](mailto:heather.wirth@in.nacdnet.net)



Dearborn County SWCD  
10729 Randall Avenue, Suite 2  
Aurora, IN 47001

Phone: (812) 926-2406 ext. 3  
<http://www.dearbornswcd.org>

Non-Profit Org

U.S. Postage

**PAID**

Lawrenceburg, IN 47025

Permit No. 139

# Dearborn County SWCD 2023 Annual Report

## Annual Meeting March 14, 2024

You're invited to attend the 66th Annual Meeting of the Dearborn County Soil and Water Conservation District. \$10 admission with the meal furnished by Rolling Pin Catering.

It will be held **Thursday, March 14 at 6:30 PM** at **The Dearborn Adult Center, 311 W Tate St, Lawrenceburg, IN 47025**

The public is welcome to attend and learn more about the SWCD and its services. The elected supervisors and appointed supervisors will be sworn in.

**Please contact the office, by Friday, March 7th, at 812-926-2406 ext. 3 or email Beth Terrill, District Coordinator, at [stella.terrill@in.nacdnet.net](mailto:stella.terrill@in.nacdnet.net) to RSVP.**

