



# COMPREHENSIVE PLAN



PUBLIC  
INVOLVEMENT

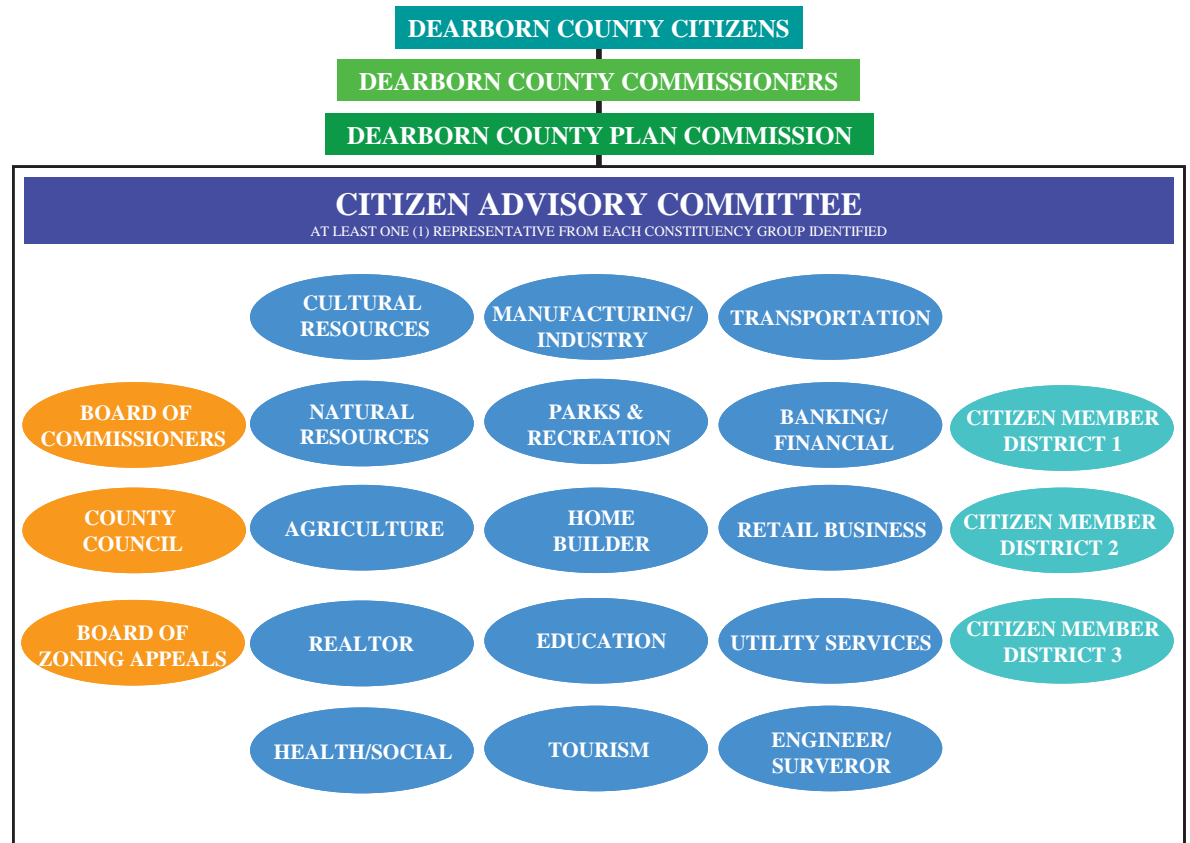
## THE PUBLIC INVOLVEMENT COMPONENT

Updating a Comprehensive Plan is a critical and complex task for any jurisdiction to undertake. The Dearborn County Plan Commission is responsible under the Indiana Legislative Code for drafting and maintaining an up-to-date Comprehensive Plan to guide policy decisions related to future development and re-development within the unincorporated areas of the County. To effectively create a document that achieves this, many perspectives and fields of knowledge must be drawn upon. The Plan Commission chose to gain input from the community using two methods; (1) formulating an Advisory Committee, comprised of representatives from specific fields and community interest groups *and* (2) conducting Public Open Houses to gather input from the general public.

### ADVISORY COMMITTEE

The first method of inviting community involvement to this process was to formulate an Advisory Committee. Citizens with various backgrounds were selected to represent the specific constituency groups listed in Figure 1-2. These representatives were solicited by the Plan Commission through a series of public forums.

**Figure 1-2: Advisory Committee Framework**



### SECTIONS

Purpose

Advisory Committee

Public Open Houses

Advisory Committee Workshops

Advisory Committee Participant Notebooks

Advisory Committee Timeline



## Citizen Advisory Committee

Member	Affiliation
<b>Bill Black, Jr.</b>	Dearborn County Emergency Management
<b>Allan Cornelius</b>	Cultural / Historical
<b>Archie Crouch</b>	Surveyor
<b>Nicole Daily</b>	Citizen Member - Surveyor/Engineer
<b>Marie Dausch</b>	New Horizons Rehabilitation Inc.- Social
<b>James Deaton</b>	Board of Zoning Appeals
<b>Brett Fehrman</b>	Realtor
<b>Mark Hall</b>	Citizen Member - Agriculture
<b>Randy Hilderbrand</b>	Social
<b>Patrick Holland</b>	Citizen Member - Education
<b>Jake Hoog</b>	Board of Zoning Appeals
<b>Jennifer Hughes</b>	Soil and Water Conservation District - Natural Resources
<b>Laverne M. Kolb</b>	Dearborn County Farm Bureau
<b>Mike Kramer</b>	Chamber of Commerce
<b>Janet Kratochvil</b>	Dearborn County Solid Waste
<b>Dennis Kraus</b>	Dearborn County Council
<b>Ken Maddin</b>	Board of Realtors
<b>David Martin</b>	Citizen Member - Technology
<b>Chris McHenry</b>	Cultural / Historical
<b>E.G. McLaughlin</b>	United Community Bank
<b>Tim Meyer</b>	Citizen Member - Agriculture
<b>Chris Mueller</b>	Citizen Member
<b>Jane Ohlmansiek</b>	Board of Zoning Appeals
<b>Judy Ostendorf</b>	Main Street Aurora - Business Retail
<b>Susan Pope</b>	Citizen Member - Education
<b>Vicki Reiter</b>	Citizen Member
<b>John G. Roeder</b>	Superintendent-Sunman Dearborn School Corporation
<b>Robert Sauerbrey</b>	Citizen Member
<b>Jay Senitza</b>	Citizen Member
<b>Debbie Smith</b>	Dearborn County Tourism
<b>Pat Sullivan</b>	Citizen Member - Parks and Recreation
<b>Jerry Tarantino</b>	Home Builders Association
<b>Ralph Thompson</b>	Engineer
<b>Bill Ullrich</b>	Dearborn County Council
<b>Greg Vollmer</b>	Citizen Member - Utility Services
<b>Montie White</b>	Transportation/Aviation

P  
U  
B  
L  
I  
C  
  
I  
N  
V  
O  
L  
V  
E  
M  
E  
N  
T



**SECTIONS**

Purpose

Advisory Committee

Public Open Houses

Advisory Committee Workshops

Advisory Committee Participant Notebooks

Advisory Committee Timeline

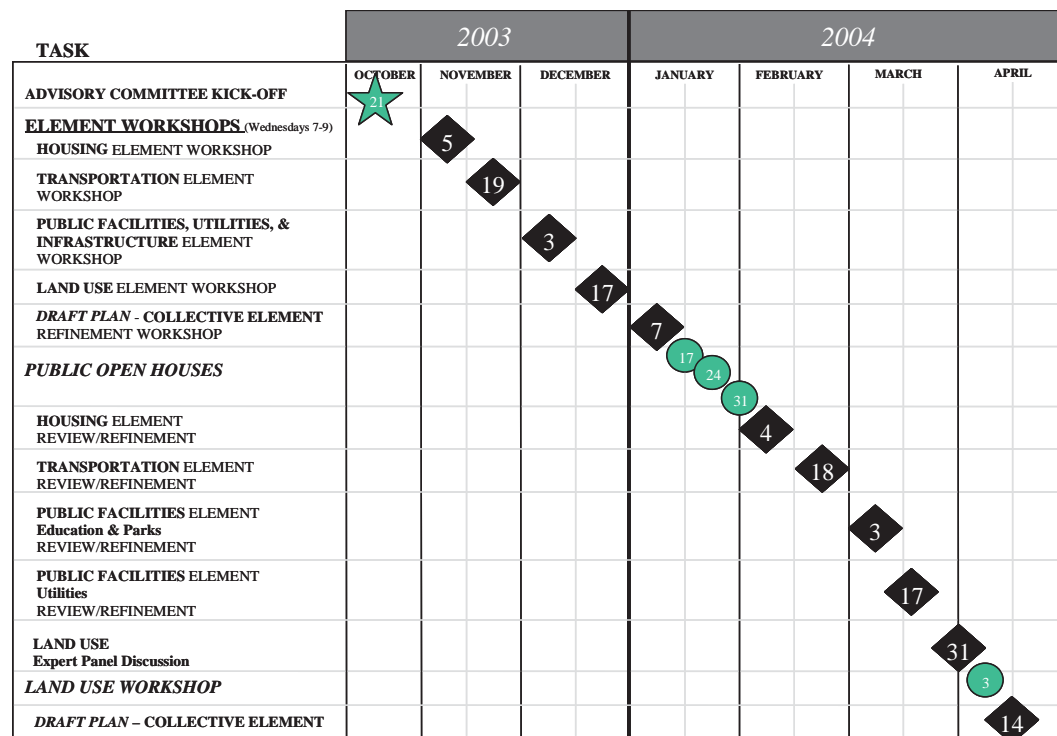
The Comprehensive Plan Update Advisory Committee was charged with providing the Plan Commission a meaningful and productive public involvement component to the Comprehensive Plan update. Regularly scheduled Committee meetings provided a forum for discussing and analyzing pertinent information relating to the Comprehensive Plan. Ultimately, the Advisory Committee made recommendations to the Plan Commission on each element of the Comprehensive Plan that included recommended goals, strategy statements, land use principles, and future land use designations.

**ADVISORY COMMITTEE WORKSHOPS**

The Plan Commission charted a course of workshops focusing on the 'Core Elements' of the Comprehensive Plan that required updating. These elements included: Housing, Transportation, Public Facilities and Land Use—in an effort to best utilize the meeting time by allowing specific focus to each unique topic. Although there is much overlap between each Element, the Advisory Committee members were asked to remain on topic as much as possible during the workshops. Two (2) 'Collective Element' workshops were included in the process to allow committee members an opportunity to discuss the relationships between the individual Elements.

Although the general public was encouraged to observe at these meetings, Plan Commission staff asked non-Advisory Committee members not to engage in workshop discussions but to provide input using written comment forms made available at each workshop.

**Figure 1-3: Advisory Committee Meeting Timeline**




**ADVISORY COMMITTEE PARTICIPANT NOTEBOOKS**

At the initial Comprehensive Plan Kick-Off Meeting, the Plan Commission staff distributed a notebook to each Advisory Committee member for the purpose of collecting information relevant to Dearborn County (throughout the update process). Following the conclusion of each Advisory Committee Workshop, each committee member was encouraged to pick up the staff reports, case studies, informative articles, and / or speaker handouts that were pertinent to the next meeting's Comprehensive Plan Element. Once these materials were distributed, committee members were expected not only to review the materials for the next workshop, but to also come prepared to discuss the relevant issues pertaining to the workshop element.

**PUBLIC OPEN HOUSES**

The second method of inviting community involvement to this process was to gather input from citizens at a round of Open House forums held at three locations in the County. Public comment was obtained at these forums by distributing questionnaires. Each household with a mailing address in the County received a personal invitation to the Open House events to ensure that EVERY resident of the County was informed

**Figure 1-4: Public Workshop Invitation**



**YOU'RE INVITED**  
TO PROVIDE INPUT  
TO THE COUNTY COMPREHENSIVE PLAN UPDATE  
AT ANY OF THE UPCOMING

**PUBLIC OPEN HOUSES**

	<b>January 17, 2004</b> EAST CENTRAL HIGH SCHOOL 1 Trojan Place 10:00am-12:00pm
	<b>January 24, 2004</b> LAWRENCEBURG HIGH SCHOOL Tiger Blvd 2:00pm-4:00pm
	<b>January 31, 2004</b> SOUTH DEARBORN HIGH SCHOOL HWY 350, Aurora 12:00pm-2:00pm

*The Dearborn County Plan Commission is currently working to update our County Comprehensive Plan and needs*

**your input!**

*Come out and review the work that has been done and provide them with*

**your concerns!**

*The future of*

**your County**

*is at stake!*

Contact Plan Commission Staff at 812.537.8821  
or visit [www.dearborncounty.org](http://www.dearborncounty.org) for more details

of the opportunity to participate in this vital process. The input provided by the citizens who participated at these forums was distributed to the Plan Commission and Advisory Committee members and was used to gauge public opinion on the various issues that arose from discussion that occurred at the Advisory Committee workshops.

The Public Open House sessions were held at three different locations, each at a different time interval, to provide County residents with convenient opportunities and flexible timing to attend these events.



P  
U  
B  
L  
I  
C  
  
I  
N  
V  
O  
L  
V  
E  
M  
E  
N  
T

