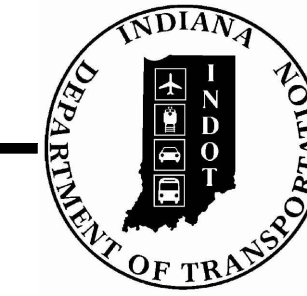


PROJECT	DESIGNATION
1702959	1702959
CONTRACT	BRIDGE FILE
R-40889	N/A

INDIANA DEPARTMENT OF TRANSPORTATION



ROAD PLANS PROJECT NO. 1702959 PE, R/W, CN

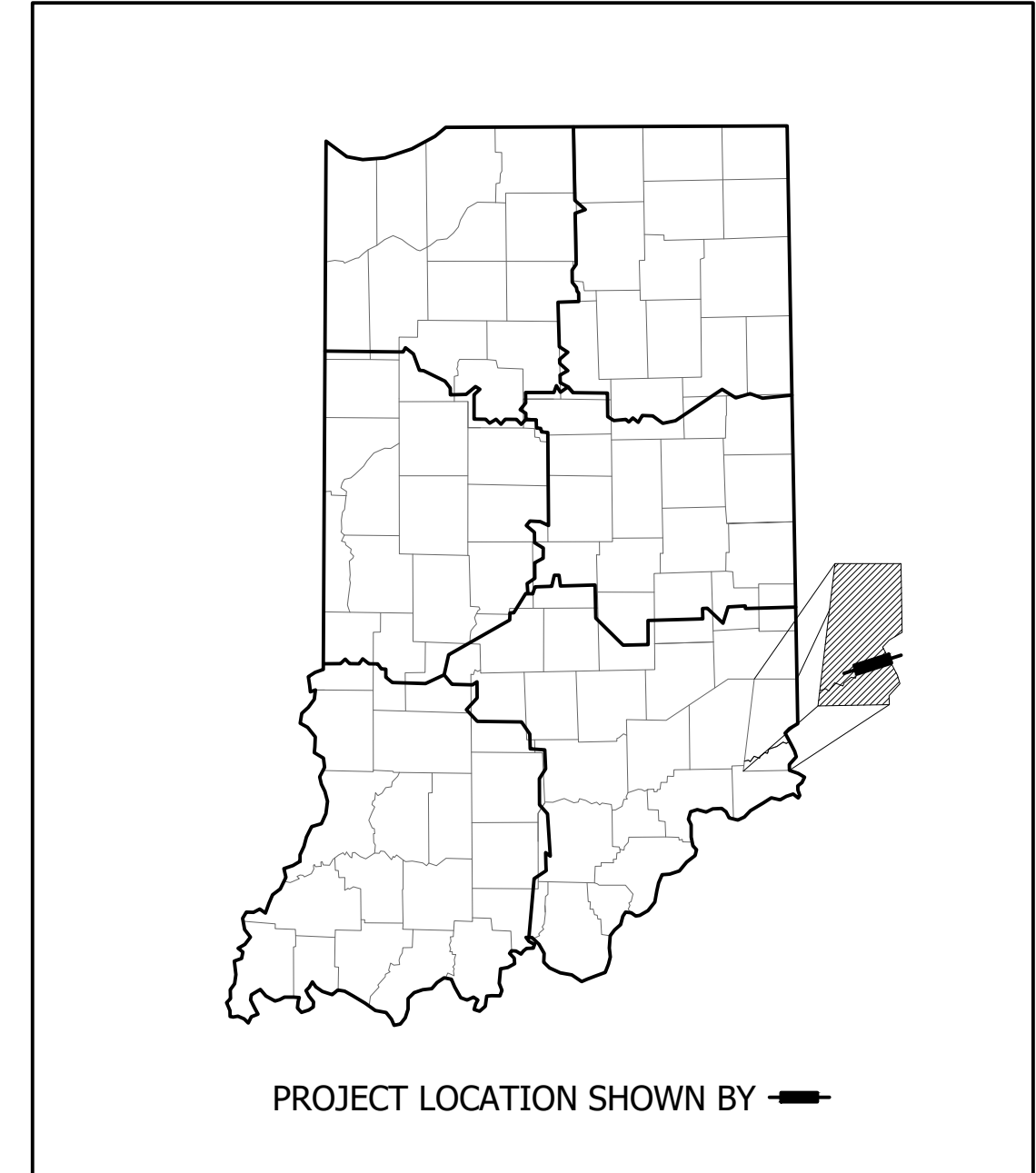
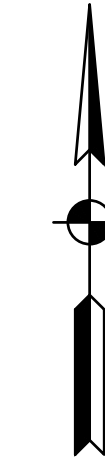
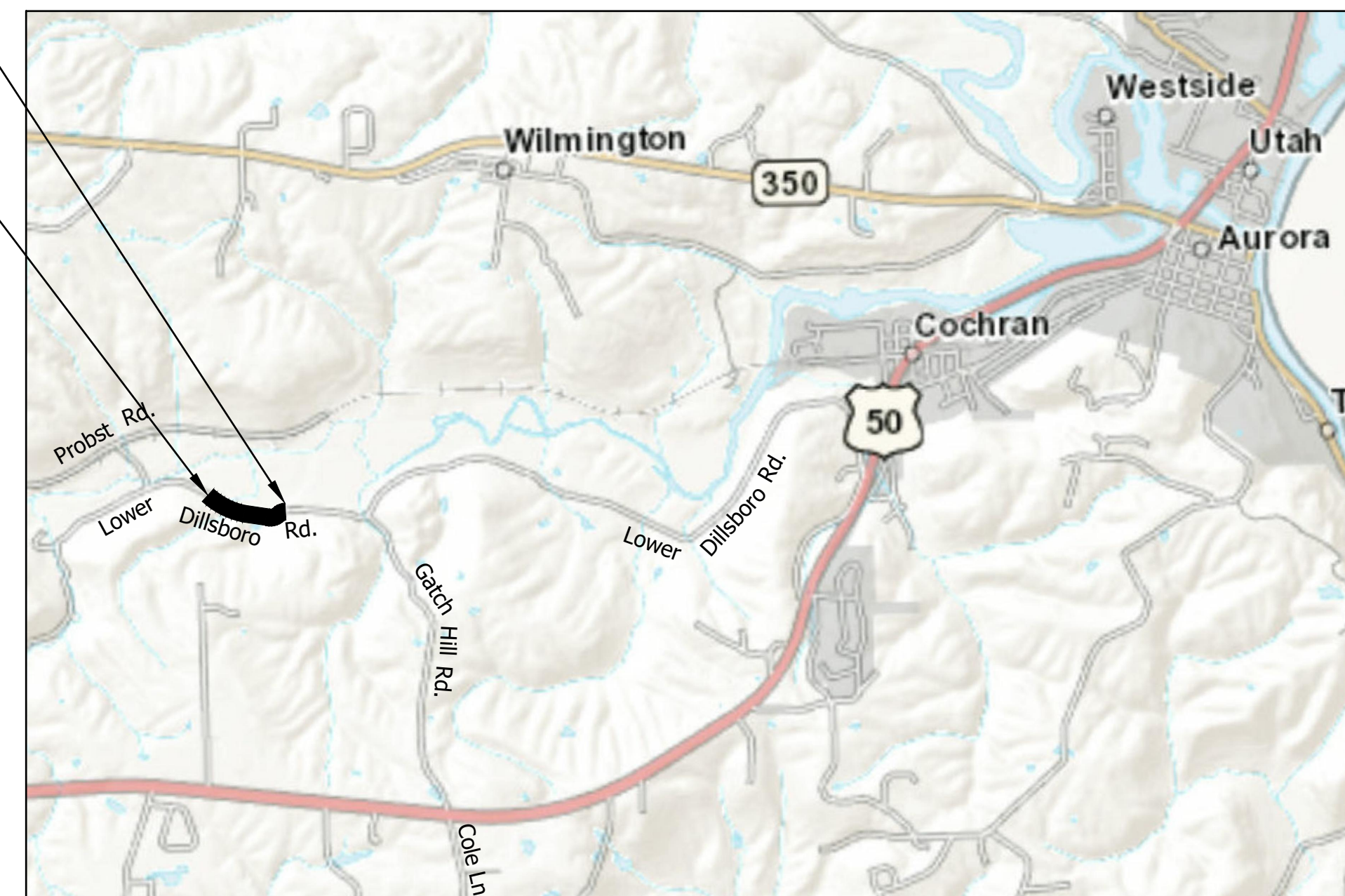
TRAFFIC DATA	LOWER DILLSBORO ROAD
A.D.T. (2022)	287 V.P.D.
A.D.T. (2042)	370 / V.P.D.
D.H.V. (2042)	93 / V.P.H.
DIRECTIONAL DISTRIBUTION	42% WB / 58% EB
TRUCKS	7.0% D.H.V.
DESIGN DATA	
DESIGN SPEED	35 mph
PROJECT DESIGN CRITERIA	3R (Local)
FUNCTIONAL CLASSIFICATION	MAJOR COLLECTOR
RURAL/URBAN	RURAL (SUBURBAN)
TERRAIN	LEVEL
ACCESS CONTROL	NONE

Slide Correction on Lower Dillsboro Road, Located 0.35 miles west of Gatch Hill Road in Section 2, Township 4 North and Range 2 West and Sections 34 and 35, Township 5 North, Range 2 West Center Township, Dearborn County, Indiana.



End Project
Sta. 25+01.50 Line "PR-A"

Begin Project
Sta. 21+00.00 Line "PR-A"



LATITUDE: 39°02'44" N LONGITUDE: 84°57'44" W

Gross Length: 0.08 MI.
Net Length: 0.08 MI.
Maximum Grade: 2.00%

DEARBORN COUNTY BOARD OF COMMISSIONERS		
JIM THATCHER, PRESIDENT - DISTRICT 1	DATE	
ART LITTLE, MEMBER - DISTRICT 2	DATE	
RICK PROBST, MEMBER - DISTRICT 3	DATE	

TODD LISTERMAN, P.E. - COUNTY ENGINEER, ERC DATE

PROJECT LOCATION MAP

Scale: 1" = 2500'

INDIANA DEPARTMENT OF TRANSPORTATION
STANDARD SPECIFICATIONS DATED 2020 TO
BE USED WITH THESE PLANS

File Name: P:\RD\C3D\18-418 Lower Dillsboro\Road\Draw\Plans\Title Sheet.dwg Plot Date: 1/21/2021 Plotted By: Clifton Ferguson

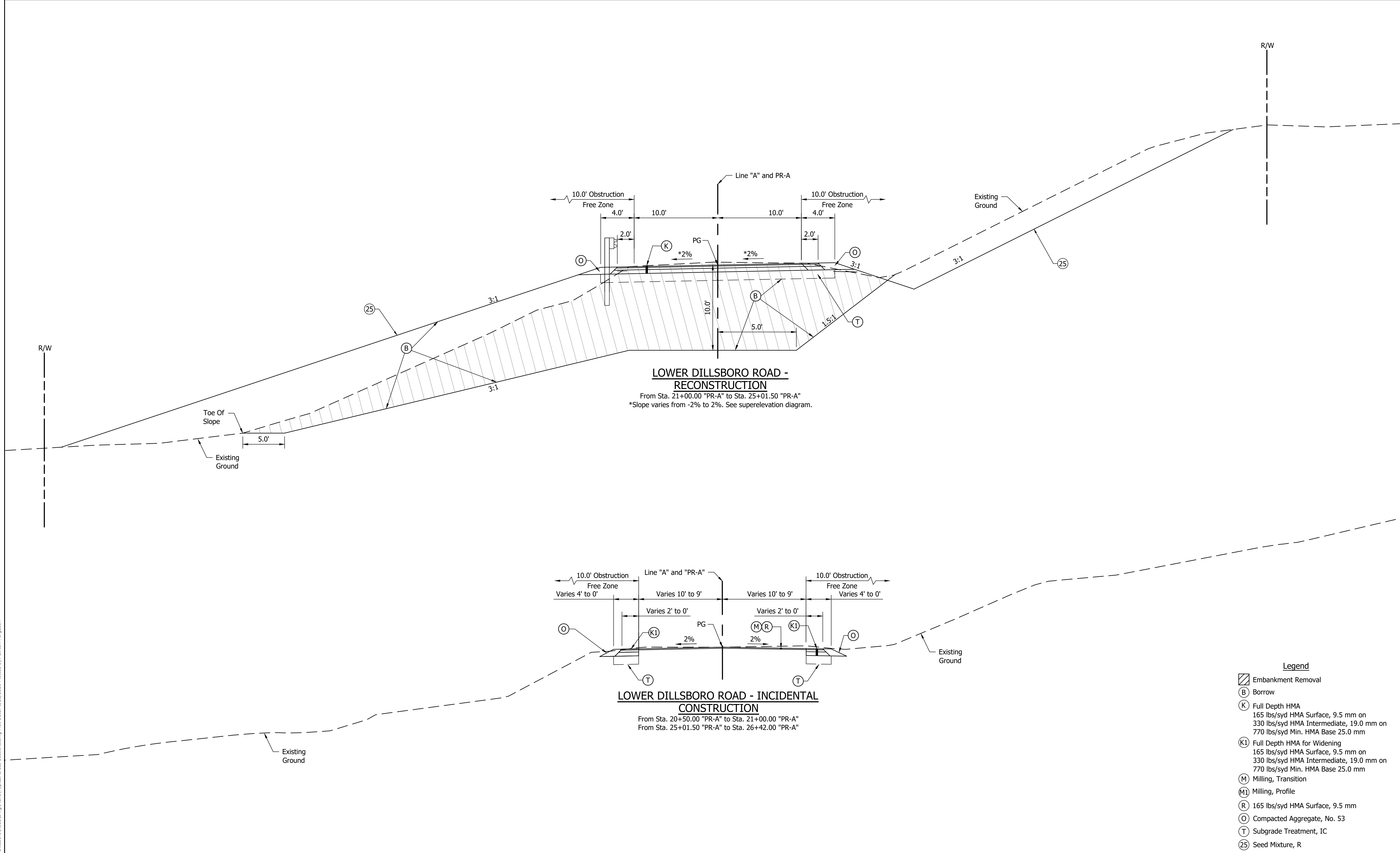


8440 Allison Pointe Blvd.
Suite 200
Indianapolis, IN 46250
Phone 317-895-2585
www.ucindy.com

PLANS PREPARED BY:	UNITED CONSULTING	(317) 895-2585
		PHONE NUMBER
CERTIFIED BY:		DATE
APPROVED FOR LETTING:	INDIANA DEPARTMENT OF TRANSPORTATION	DATE

BRIDGE FILE	
N/A	
DESIGNATION	
1702959	
SURVEY BOOK	SHEETS
1	of 14
CONTRACT	PROJECT
R-40889	1702959

File Name: P:\RD\CDD\18-118 Lower Dillsboro\Road\Drawings\Typical Cross Sections.dwg Plot Date: 1/21/2021 Plotted By: Clifton Ferguson



LOWER DILLSBORO ROAD - RECONSTRUCTION
 From Sta. 21+00.00 "PR-A" to Sta. 25+01.50 "PR-A"
 *Slope varies from -2% to 2%. See superelevation diagram.

LOWER DILLSBORO ROAD - INCIDENTAL CONSTRUCTION
 From Sta. 20+50.00 "PR-A" to Sta. 21+00.00 "PR-A"
 From Sta. 25+01.50 "PR-A" to Sta. 26+42.00 "PR-A"

- Legend**
- Embankment Removal
 - Borrow
 - Full Depth HMA
165 lbs/syd HMA Surface, 9.5 mm on
330 lbs/syd HMA Intermediate, 19.0 mm on
770 lbs/syd Min. HMA Base 25.0 mm
 - Full Depth HMA for Widening
165 lbs/syd HMA Surface, 9.5 mm on
330 lbs/syd HMA Intermediate, 19.0 mm on
770 lbs/syd Min. HMA Base 25.0 mm
 - Milling, Transition
 - Milling, Profile
 - 165 lbs/syd HMA Surface, 9.5 mm
 - Compacted Aggregate, No. 53
 - Subgrade Treatment, IC
 - Seed Mixture, R



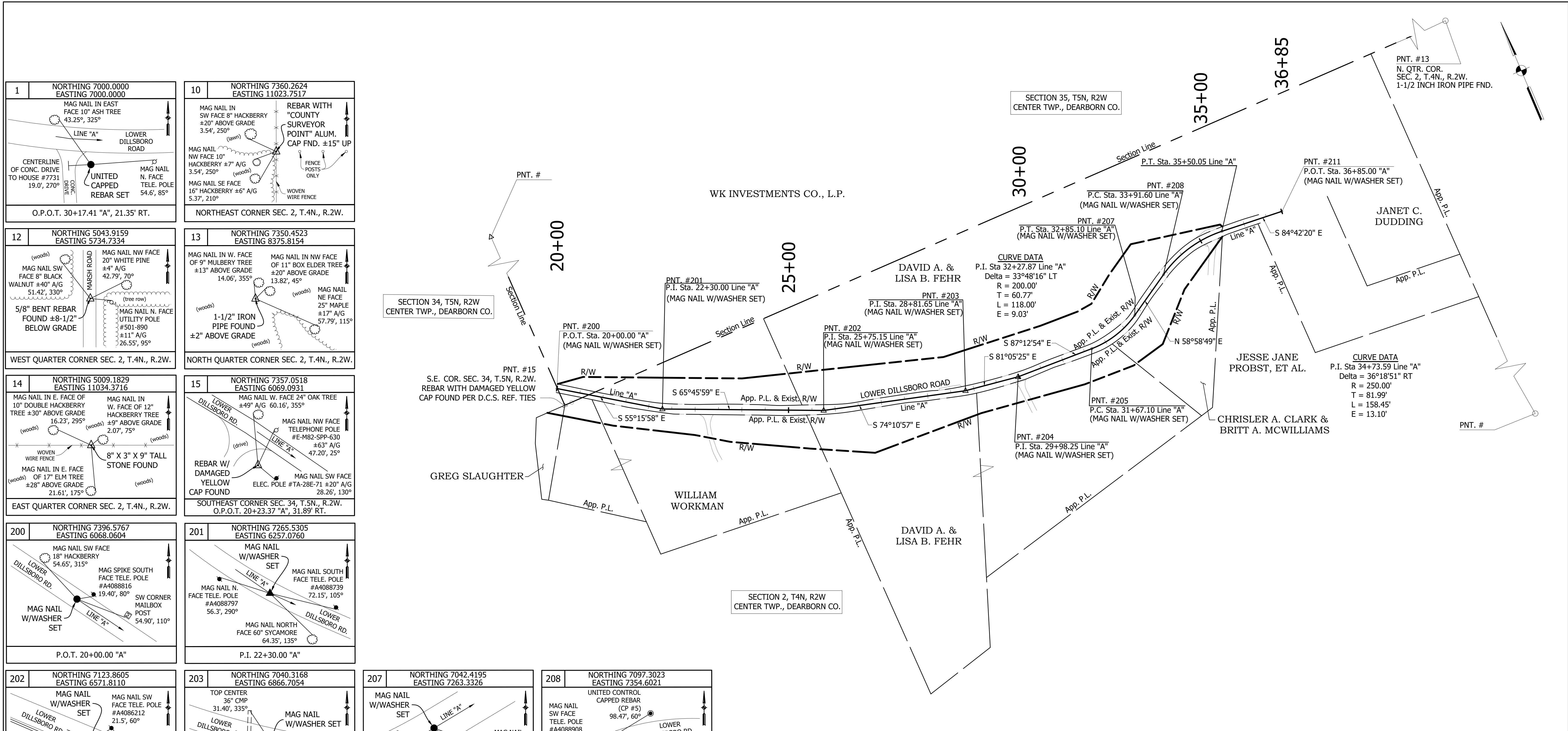
8440 Allison Pointe Boulevard, Suite 200
 Indianapolis, IN 46250
 Phone 317-895-2585
 www.ucindy.com

RECOMMENDED FOR APPROVAL _____		DESIGN ENGINEER _____ DATE _____	
DESIGNED: HEK	DRAWN: MVD		
CHECKED: JAR	CHECKED: JAR		

INDIANA
DEPARTMENT OF TRANSPORTATION

TYPICAL SECTIONS

HORIZONTAL SCALE	BRIDGE FILE
1" = 5'	N/A
VERTICAL SCALE	DESIGNATION
N/A	1702959
SURVEY BOOK	SHEETS
	3 of 14
CONTRACT	PROJECT
R-40889	1702959



<p>1 NORTHING 7000.0000 EASTING 7000.0000</p> <p>MAG NAIL IN EAST FACE 10" ASH TREE 43.25', 325°</p> <p>LOWER DILLSBORO ROAD</p> <p>CENTERLINE OF CONC. DRIVE TO HOUSE #7731 19.0', 270°</p> <p>UNITED CONTROL CAPPED REBAR SET</p> <p>O.P.O.T. 30+17.41 "A", 21.35' RT.</p>	<p>10 NORTHING 7360.2624 EASTING 11023.7517</p> <p>MAG NAIL IN SW FACE 8" HACKBERRY ±20' ABOVE GRADE 3.54', 250°</p> <p>REBAR WITH "COUNTY SURVEYOR POINT" ALUM. CAP FND. ±15" UP</p> <p>MAG NAIL NW FACE 10" HACKBERRY ±7' A/G 3.54', 250°</p> <p>MAG NAIL SE FACE 15" HACKBERRY ±6" A/G 5.37', 210°</p> <p>NORTHEAST CORNER SEC. 2, T.4N., R.2W.</p>
<p>12 NORTHING 5043.9159 EASTING 5734.7334</p> <p>MAG NAIL SW FACE 8" BLACK WALNUT ±40' A/G 51.42', 330°</p> <p>5/8" BENT REBAR FOUND ±8-1/2" BELOW GRADE</p> <p>MAG NAIL NW FACE 20" WHITE PINE ±4' A/G 42.79', 70°</p> <p>MAG NAIL N. FACE UTILITY POLE #501-890 ±11" A/G 26.55', 95°</p> <p>WEST QUARTER CORNER SEC. 2, T.4N., R.2W.</p>	<p>13 NORTHING 7350.4523 EASTING 8375.8154</p> <p>MAG NAIL IN W. FACE OF 9" MULBERRY TREE ±13' ABOVE GRADE 14.06', 355°</p> <p>MAG NAIL IN NW FACE OF 11" BOX ELDER TREE ±20' ABOVE GRADE 13.82', 45°</p> <p>MAG NAIL NE FACE 25" MAPLE ±17' A/G 57.79', 115°</p> <p>1-1/2" IRON PIPE FOUND ±2" ABOVE GRADE</p> <p>NORTH QUARTER CORNER SEC. 2, T.4N., R.2W.</p>
<p>14 NORTHING 5009.1829 EASTING 11034.3716</p> <p>MAG NAIL IN E. FACE OF 10" DOUBLE HACKBERRY TREE ±30' ABOVE GRADE 16.23', 295°</p> <p>MAG NAIL IN W. FACE OF 12" HACKBERRY TREE ±9' ABOVE GRADE 2.07', 75°</p> <p>WOVEN WIRE FENCE</p> <p>MAG NAIL IN E. FACE OF 17" ELM TREE ±28' ABOVE GRADE 21.61', 175°</p> <p>8" X 3" X 9" TALL STONE FOUND</p> <p>EAST QUARTER CORNER SEC. 2, T.4N., R.2W.</p>	<p>15 NORTHING 7357.0518 EASTING 6069.0931</p> <p>MAG NAIL W. FACE 24" OAK TREE ±49' A/G 60.16', 355°</p> <p>MAG NAIL NW FACE TELEPHONE POLE #E-M82-SPP-630 ±45' A/G 47.20', 25°</p> <p>REBAR W/ DAMAGED YELLOW CAP FOUND</p> <p>MAG NAIL SW FACE ELEC. POLE #TA-28E-71 ±20' A/G 28.26', 130°</p> <p>SOUTHEAST CORNER SEC. 34, T.5N., R.2W. O.P.O.T. 20+23.37 "A", 31.89' RT.</p>
<p>200 NORTHING 7396.5767 EASTING 6068.0604</p> <p>MAG NAIL SW FACE 18" HACKBERRY 54.65', 315°</p> <p>MAG SPIKE SOUTH FACE TELE. POLE #A4088816 19.40', 80°</p> <p>MAG NAIL W/WASHER SET</p> <p>P.O.T. 20+00.00 "A"</p>	<p>201 NORTHING 7265.5305 EASTING 6257.0760</p> <p>MAG NAIL W/WASHER SET</p> <p>MAG NAIL N. FACE TELE. POLE #A4088797 56.3', 290°</p> <p>MAG NAIL SOUTH FACE TELE. POLE #A4088739 72.15', 105°</p> <p>MAG NAIL NORTH FACE 60" SYCAMORE 64.35', 135°</p> <p>P.I. 22+30.00 "A"</p>
<p>202 NORTHING 7123.8605 EASTING 6571.8110</p> <p>MAG NAIL W/WASHER SET</p> <p>MAG NAIL SW FACE TELE. POLE #A4086212 21.5', 60°</p> <p>NE CORNER CONCRETE WALL 12.65', 180°</p> <p>SIGN POST 14.70', 160°</p> <p>P.I. 25+75.15 "A"</p>	<p>203 NORTHING 7040.3168 EASTING 6866.7054</p> <p>TOP CENTER 36" CMP 31.40', 335°</p> <p>MAG NAIL W/WASHER SET</p> <p>TOP CENTER 36" CMP 23.3', 235°</p> <p>MAG SPIKE N. FACE TELE. POLE #A4088880 30.10', 130°</p> <p>P.I. 28+81.65 "A"</p>
<p>207 NORTHING 7042.4195 EASTING 7263.3326</p> <p>MAG NAIL W/WASHER SET</p> <p>MAG NAIL NW FACE 8" ASH 21.7', 110°</p> <p>MAG NAIL N. FACE 12" ASH 16.55', 175°</p> <p>P.T. 32+85.10 "A"</p>	<p>208 NORTHING 7097.3023 EASTING 7354.6021</p> <p>UNITED CONTROL CAPPED REBAR (CP #5) 98.47', 60°</p> <p>MAG NAIL SW FACE TELE. POLE #A4088908 19.25', 315°</p> <p>TOP END 12" STEEL PIPE 108.80', 80°</p> <p>P.C. 33+91.60 "A"</p>
<p>204 NORTHING 7022.2579 EASTING 6981.8984</p> <p>MAG NAIL SOUTH FACE 10" WALNUT 15.30', 355°</p> <p>MAG NAIL W/WASHER SET</p> <p>MAG SPIKE NORTH FACE TELEPHONE POLE #A4088880 92.2', 270°</p> <p>MAG NAIL SOUTH FACE TELEPHONE POLE #A4088902 74.8', 105°</p> <p>P.I. 29+98.25 "A"</p>	<p>205 NORTHING 7014.0540 EASTING 7150.5490</p> <p>MAG NAIL S. FACE 8" ASH 56.0', 300°</p> <p>MAG NAIL W/WASHER SET</p> <p>MAG NAIL NORTH FACE TELEPHONE POLE #A4088902 96.80', 265°</p> <p>MAG NAIL W. FACE 18" OAK 28.90', 180°</p> <p>P.C. 31+67.10 "A"</p>
<p>209 NORTHING 7139.5533 EASTING 7424.8652</p> <p>UNITED CONTROL CAPPED REBAR (CP #5) 16.48', 55°</p> <p>MAG NAIL S. FACE TELE. POLE #A4088761 59.0', 80°</p> <p>TOP POINT OF "4" OF ADDRESS ON BIG ROCK 75.5', 110°</p> <p>P.I. 34+73.59 "A"</p>	<p>211 NORTHING 7119.5355 EASTING 7640.8778</p> <p>MAG NAIL S. FACE 8" ASH 30.0', 290°</p> <p>SW CORNER MAILBOX POST 19.35', 60°</p> <p>SIGN POST 48.2', 85°</p> <p>MAG NAIL W/WASHER SET</p> <p>P.O.T. 36+85.00 "A"</p>

CONTROL POINT	Northing	Easting	Adj. Diff. Levelled Elev. (N.A.V.D. 88 - FEET)	DESCRIPTION	BENCH MARK	ADJ. DIFF. LEVELLED ELEV. (N.A.V.D. 88 - FEET)	STATION	OFF SET	NUMB ER	DESCRIPTION
CP 1	7000.000 0	7000.000 0	*489.000	UNITED CONTROL CAPPED REBAR SET	TBM 1	491.393	O.P.O.T. 20+13.9 "A"	13.6' LT.	5001	MAG SPIKE SET IN THE SOUTH FACE OF TELEPHONE POLE #A4088816 ±15 FEET NORTH-NORTHEAST OF THE CENTERLINE OF LOWER DILLSBORO ROAD ±25 FEET EAST-SOUTHEAST OF THE EXTENDED CENTERLINE OF THE DRIVE TO HOUSE #7909.
CP 2	7313.152 0	6160.160 7	486.058	UNITED CONTROL CAPPED REBAR SET	TBM 2	490.075	O.P.O.T. 29+07.5 "A"	16.2' RT.	5185	MAG SPIKE SET IN THE NORTH FACE OF TELEPHONE POLE #A4088880 ±15 FEET SOUTH OF THE CENTERLINE OF LOWER DILLSBORO ROAD AND ±100 FEET WEST OF THE CENTERLINE OF THE DRIVE TO HOUSE #7731.
CP 3	7103.294 9	6611.078 3	489.024	MAG SPIKE SET	TBM 3	486.318	O.P.O.T. 36+26.3 "A"	17.0' RT.	4999	MAG SPIKE SET IN THE NORTH FACE OF TELEPHONE POLE #A4088892 ±20 FEET SOUTH OF LOWER DILLSBORO ROAD AND ±100 FEET EAST OF THE CENTERLINE OF THE DRIVE TO HOUSE #7647.
CP 4	7024.550 5	7246.066 4	490.367	MAG SPIKE SET						
CP 5	7148.437 1	7438.750 8	489.277	UNITED CONTROL CAPPED REBAR SET	NGS BM N 94	490.90			100	

Note: *OPUS solution elevation. Held to establish the vertical datum of the project.

File Name: P:\RD\CD\18-418 Lower Dillsboro Road\Drawings\Plan\18-418 Lower Dillsboro Road Slide Off Correction.dwg Plot Date: 1/21/2021 Plotted By: Clifton Ferguson

UNITED Consulting
8440 Allison Pointe Boulevard, Suite 200
Indianapolis, IN 46250
Phone 317-895-2585
www.ucindy.com

RECOMMENDED FOR APPROVAL _____ DESIGN ENGINEER DATE _____

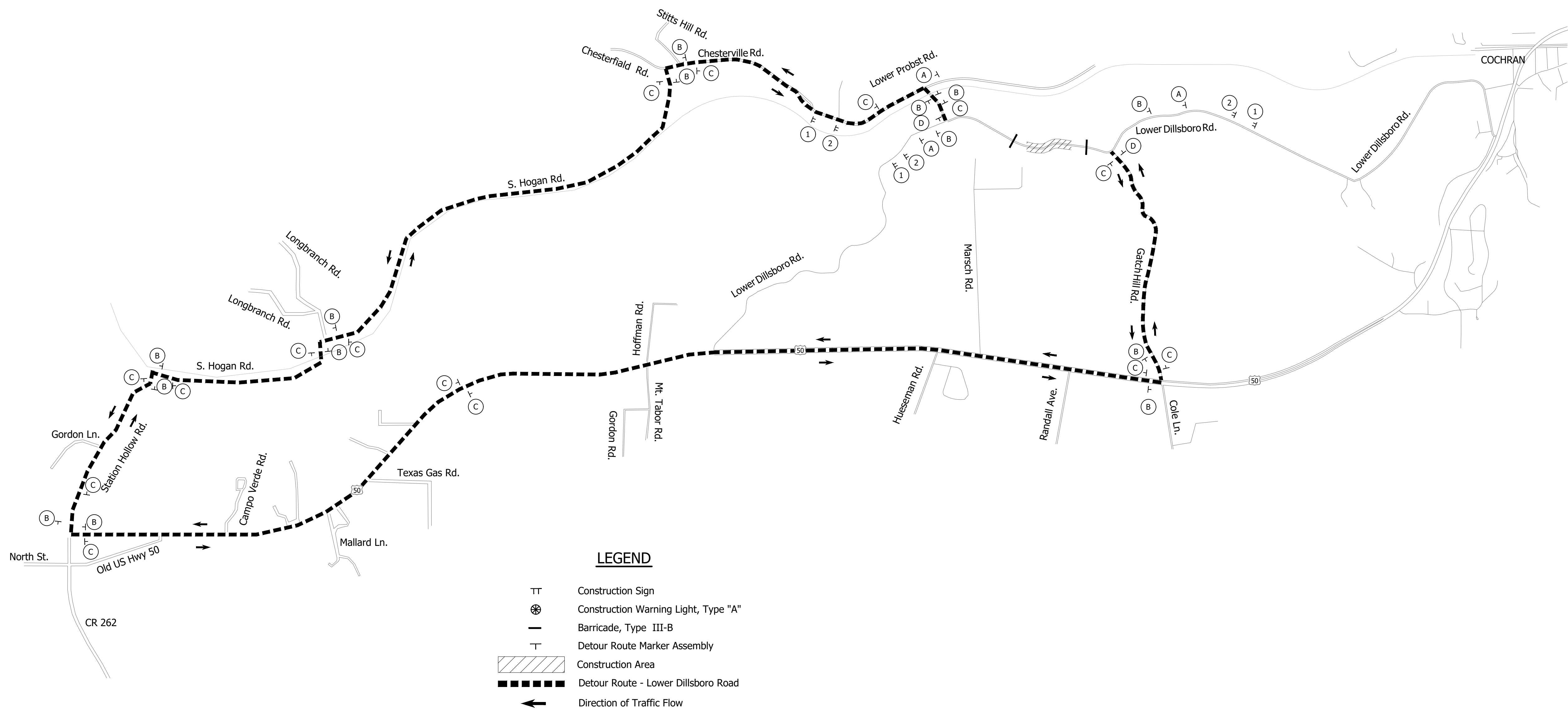
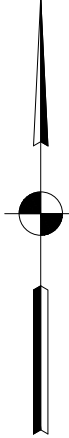
DESIGNED: HEK DRAWN: MVD

CHECKED: JAR CHECKED: JAR

INDIANA DEPARTMENT OF TRANSPORTATION

SURVEY CONTROL & GEOMETRIC TIE-UP DETAIL

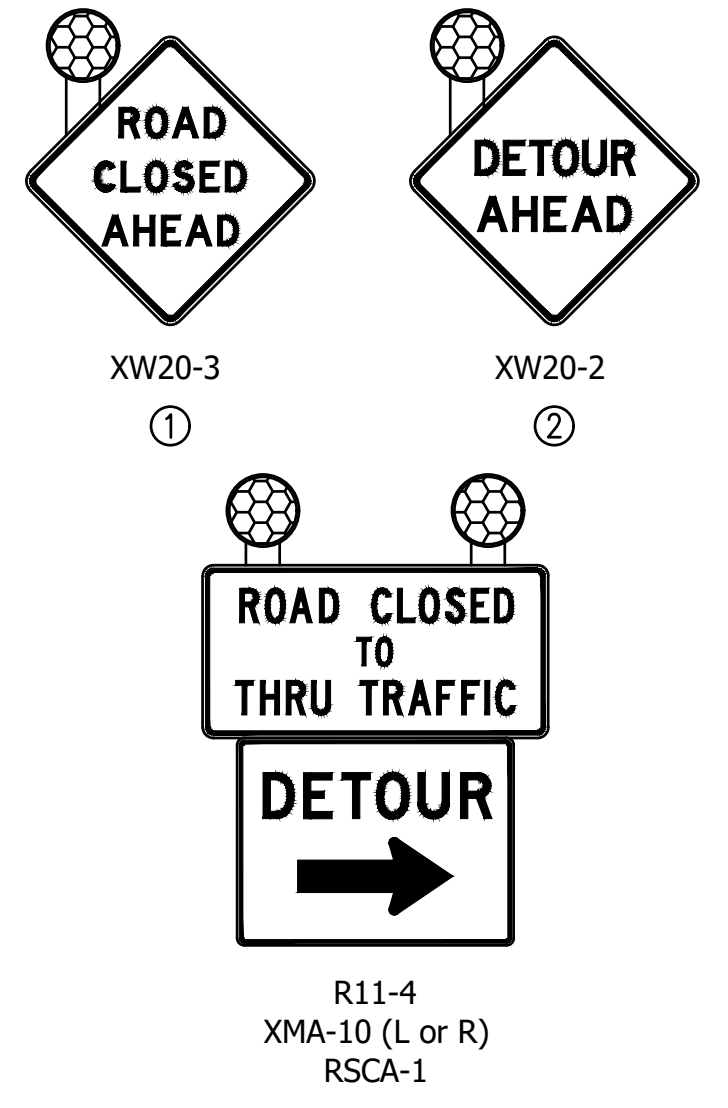
HORIZONTAL SCALE	BRIDGE FILE
1:100	N/A
VERTICAL SCALE	DESIGNATION
N/A	1702959
SURVEY BOOK	SHEETS
	4 of 14
CONTRACT	PROJECT
R-40889	1702959



- LEGEND**
- Construction Sign
 - Construction Warning Light, Type "A"
 - Barricade, Type III-B
 - Detour Route Marker Assembly
 - Construction Area
 - Detour Route - Lower Dillsboro Road
 - Direction of Traffic Flow

- DETOUR ROUTE MARKER ASSEMBLIES**
- (A) Advance D.R.M.A.
 - (B) Directional D.R.M.A.
 - (C) Confirming D.R.M.A.
 - (D) End D.R.M.A.

NOTES:
For Detour Route Marker Assemblies see Standard Drawing E801-TCDT-03.



SIGN LEGEND

QUANTITY SUMMARY		
	Project Total	Units
Detour Route Marker Assembly	34	Each
Construction Sign, A	6	Each
Construction Sign, C	2	Each
Road Closure Sign Assembly	2	Each
Barricade, Type III-B	48	LFT

File Name: P:\RD\CD\18-118 Lower Dillsboro\Road\Drawings\Plan\WOT Detour.dwg Plot Date: 1/21/2021 Plotted By: Clifton Ferguson



8440 Allison Pointe Boulevard, Suite 200
Indianapolis, IN 46250
Phone 317-895-2585
www.ucindy.com

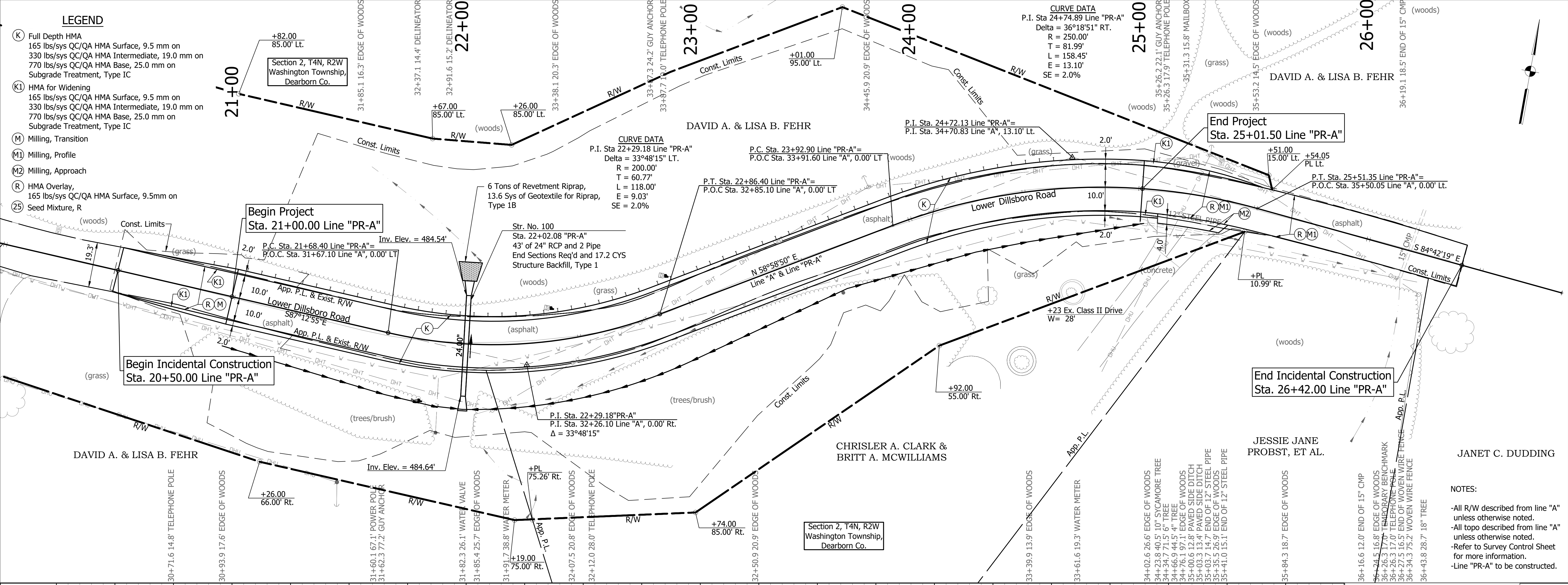
RECOMMENDED FOR APPROVAL _____
DESIGN ENGINEER DATE _____

DESIGNED: HEK DRAWN: MVD
CHECKED: JAR CHECKED: JAR

INDIANA
DEPARTMENT OF TRANSPORTATION

DETOUR ROUTE
MAINTANCE OF TRAFFIC

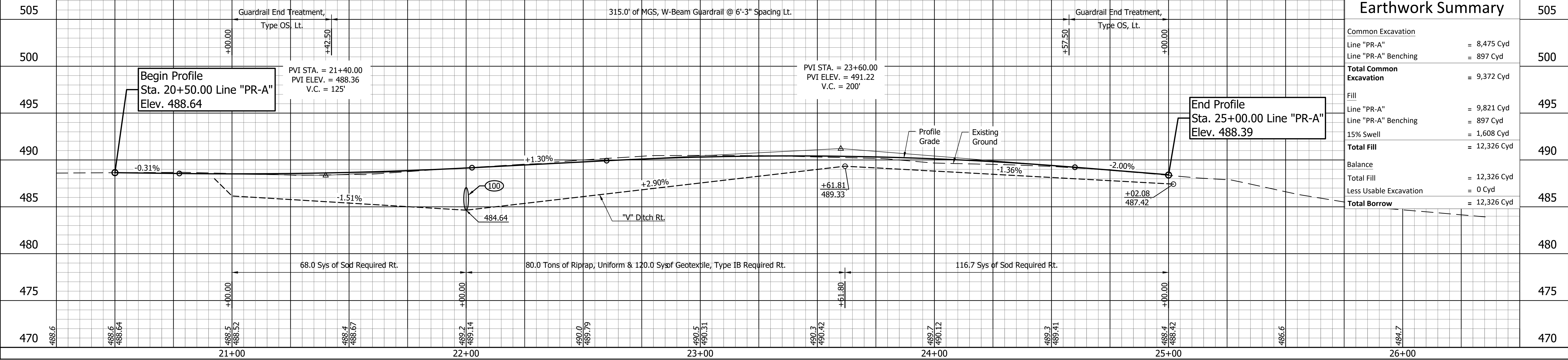
HORIZONTAL SCALE	BRIDGE FILE
1:3500	N/A
VERTICAL SCALE	DESIGNATION
N/A	1702959
SURVEY BOOK	SHEETS
	5 of 14
CONTRACT	PROJECT
R-40889	1702959



- LEGEND**
- (K) Full Depth HMA
165 lbs/sys QC/QA HMA Surface, 9.5 mm on
330 lbs/sys QC/QA HMA Intermediate, 19.0 mm on
770 lbs/sys QC/QA HMA Base, 25.0 mm on
Subgrade Treatment, Type IC
 - (K1) HMA for Widening
165 lbs/sys QC/QA HMA Surface, 9.5 mm on
330 lbs/sys QC/QA HMA Intermediate, 19.0 mm on
770 lbs/sys QC/QA HMA Base, 25.0 mm on
Subgrade Treatment, Type IC
 - (M) Milling, Transition
 - (M1) Milling, Profile
 - (M2) Milling, Approach
 - (R) HMA Overlay,
165 lbs/sys QC/QA HMA Surface, 9.5mm on
Subgrade Treatment, Type IC
 - (25) Seed Mixture, R

NOTES:

- All R/W described from line "A" unless otherwise noted.
- All topo described from line "A" unless otherwise noted.
- Refer to Survey Control Sheet for more information.
- Line "PR-A" to be constructed.



Earthwork Summary		505
Common Excavation		
Line "PR-A"	= 8,475 Cyd	500
Line "PR-A" Benching	= 897 Cyd	
Total Common Excavation	= 9,372 Cyd	
Fill		
Line "PR-A"	= 9,821 Cyd	495
Line "PR-A" Benching	= 897 Cyd	
15% Swell	= 1,608 Cyd	490
Total Fill	= 12,326 Cyd	
Balance		
Total Fill	= 12,326 Cyd	485
Less Usable Excavation	= 0 Cyd	
Total Borrow	= 12,326 Cyd	

File Name: P:\RD\CD\18-118 Lower Dillsboro Road\Drawings\Plan and Profile.dwg Plot Date: 1/21/2021 Plotted By: Clinton Ferguson

8440 Allison Pointe Boulevard, Suite 200
Indianapolis, IN 46250
Phone 317-895-2585
www.ucindy.com

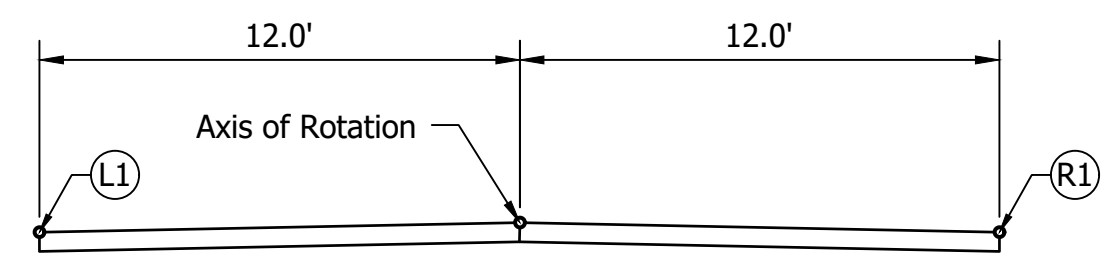
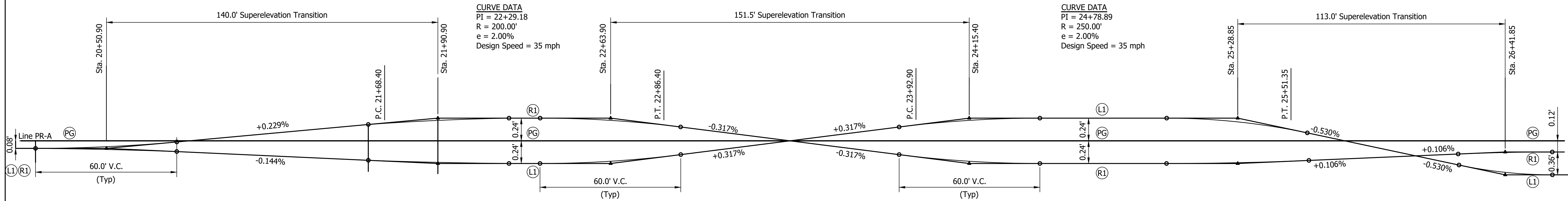
RECOMMENDED FOR APPROVAL	DESIGN ENGINEER	DATE
DESIGNED: HEK	DRAWN: MVD	
CHECKED: JAR	CHECKED: JAR	

INDIANA
DEPARTMENT OF TRANSPORTATION

PLAN AND PROFILE
LINE "PR-A"

HORIZONTAL SCALE	BRIDGE FILE
1" = 20'	N/A
VERTICAL SCALE	DESIGNATION
1" = 5'	1702959
SURVEY BOOK	SHEETS
	6 of 14
CONTRACT	PROJECT
R-40889	1702959

File Name: P:\RD\CD\18-118 Lower Dilboro\Road\Drawings\Superelevation working.dwg Plot Date: 1/21/2021 Plotted By: Clifton Ferguson



--	--	--



8440 Allison Pointe Boulevard, Suite 200
 Indianapolis, IN 46250
 Phone 317-895-2585
 www.ucindy.com

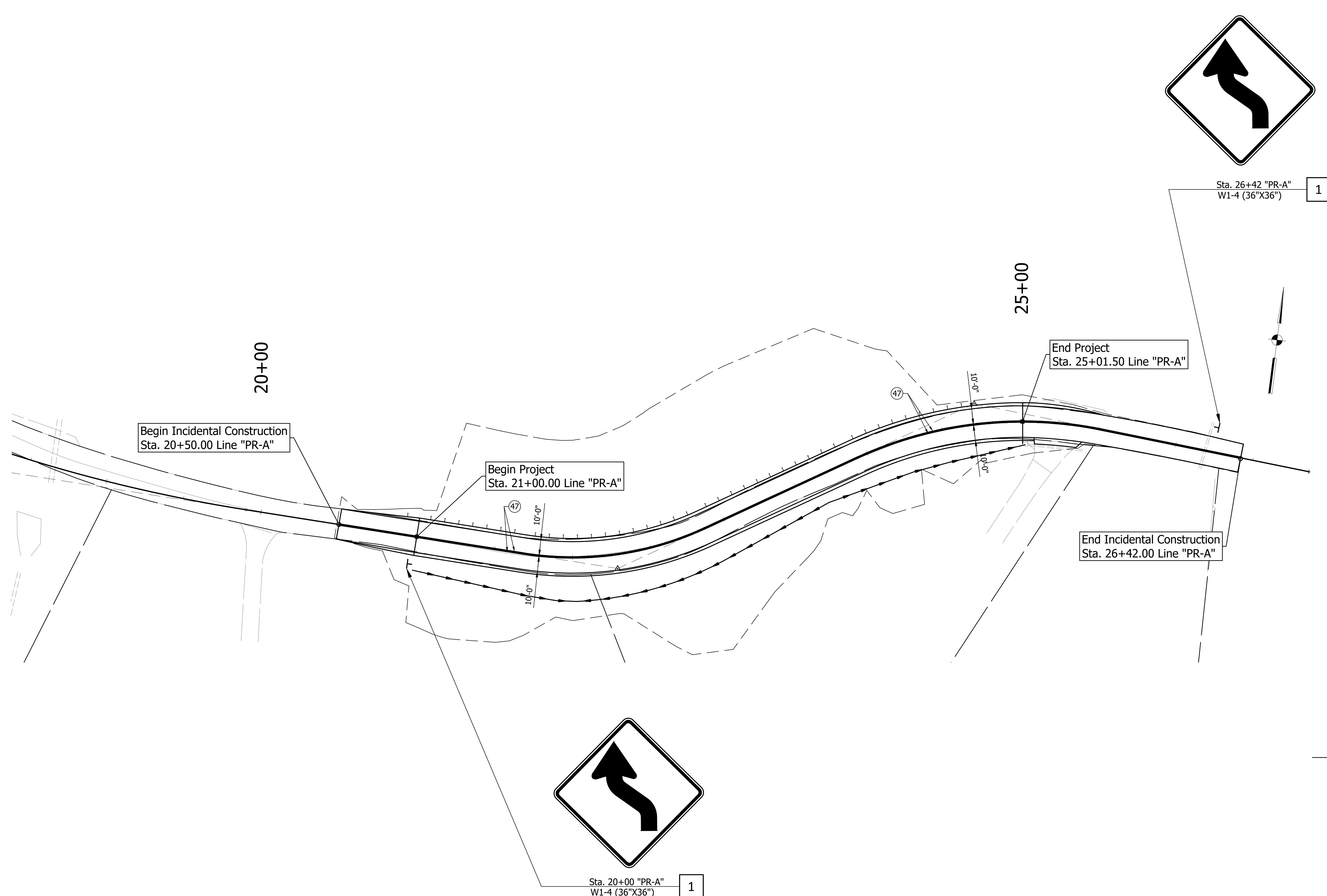
RECOMMENDED FOR APPROVAL _____		DESIGN ENGINEER _____	DATE _____
DESIGNED: HEK	DRAWN: MVD		
CHECKED: JAR	CHECKED: JAR		

INDIANA
 DEPARTMENT OF TRANSPORTATION

SUPERELEVATION DIAGRAM
 LINE "PR-A"

HORIZONTAL SCALE 1" = 20'	BRIDGE FILE N/A
VERTICAL SCALE 1" = 5'	DESIGNATION 1702959
SURVEY BOOK 	SHEETS 7 of 14
CONTRACT R-40889	PROJECT 1702959

File Name: P:\RD\CD\18-118 Lower Dilboro\Road\Draw\Plane\Signing and Pavt Mkg Details.dwg Plot Date: 1/21/2021 Plotted By: Clifton Ferguson



LEGEND

- (47) Line, Paint, Solid, Yellow, 4"
- X ——— Ground Mounted Sign
- Existing Ground Mounted Sign
- 1 New Sheet Sign and Supports

--	--	--

8440 Allison Pointe Boulevard, Suite 200
 Indianapolis, IN 46250
 Phone 317-895-2585
 www.ucindy.com

RECOMMENDED FOR APPROVAL _____		DESIGN ENGINEER _____		DATE _____	
DESIGNED: HEK	DRAWN: MEH				
CHECKED: JAR	CHECKED: JAR				

INDIANA
DEPARTMENT OF TRANSPORTATION

SIGNING AND PAVEMENT MARKINGS
DETAILS

HORIZONTAL SCALE	BRIDGE FILE	
1" = 20'	N/A	
VERTICAL SCALE	DESIGNATION	
1" = 10'	1702959	
SURVEY BOOK	SHEETS	
	8	of 14
CONTRACT	PROJECT	
R-40889	1702959	

SUMMARY OF QUANTITIES AND APPROACH TABLE

LOCATION (STATION)	DESCRIPTION (APPROACH TYPE OR CLASS)	WIDTH	GROSS LENGTH	NET LENGTH	RADII	DISTANCE BEYOND RIGHT-OF- WAY	SURFACE BEYOND R/W LINE			HMA MATERIAL FOR MAINLINE						ASPHALT FOR TACK COAT	COMPACTED AGGREGATE, NO. 53	COMPACTED AGGREGATE, NO. 53, BASE	QC/QA-HMA, 2, 64, SURFACE, 9.5 mm	PCCP FOR APPROACHES 6 IN.	CURB AND GUTTER, REMOVE	CURB CONCRETE, REMOVE	SIDEWALK, CONCRETE, REMOVE	PAVEMENT REMOVE	DETECTABLE WARNING SURFACES	HMA PATCHING, TYPE B	CURB RAMP, CONCRETE	SIDEWALK, CONCRETE	MILLING TRANSITION	MILLING APPROACH	MILLING PROFILE	SUBGRADE TREATMENT, TYPE II	SUBGRADE TREATMENT, TYPE IC	REMARKS
							COMPACTED AGGREGATE SURFACE	BITUMINOUS	CONCRETE	Surface	Inter.	Base																						
										HMA, 2, 64	HMA, 2, 64	HMA, 2, 64																						
							"W"	"L"																										
ft.	ft.	ft.	ft.	ft.	ft.	ft.	yd2	yd2	yd2	Ton	Ton	Ton	Ton	Ton	Ton	Ton	yd2	ft.	ft.	yd2	yd2	yd2	Ton	yd2	yd2	yd2	yd2	yd2	yd2	yd2				
Line PR-A	Lower Dillsboro									126.0	230.0	411.00				1.0												110.0		225.0		1310.0		
25+22 Rt	Drive Wedge	26.5	3														0.8												13.0					
Totals										126.0	230.0	411.0				1.0											110.0		13.0		225.0		1310.0	

File Name: P:\RD\CDD\18-118 Lower Dillsboro\Road\Drawings\Plans\Approach Table Drawing.dwg Plot Date: 1/21/2021 Plotted By: Clifton Ferguson

--	--	--

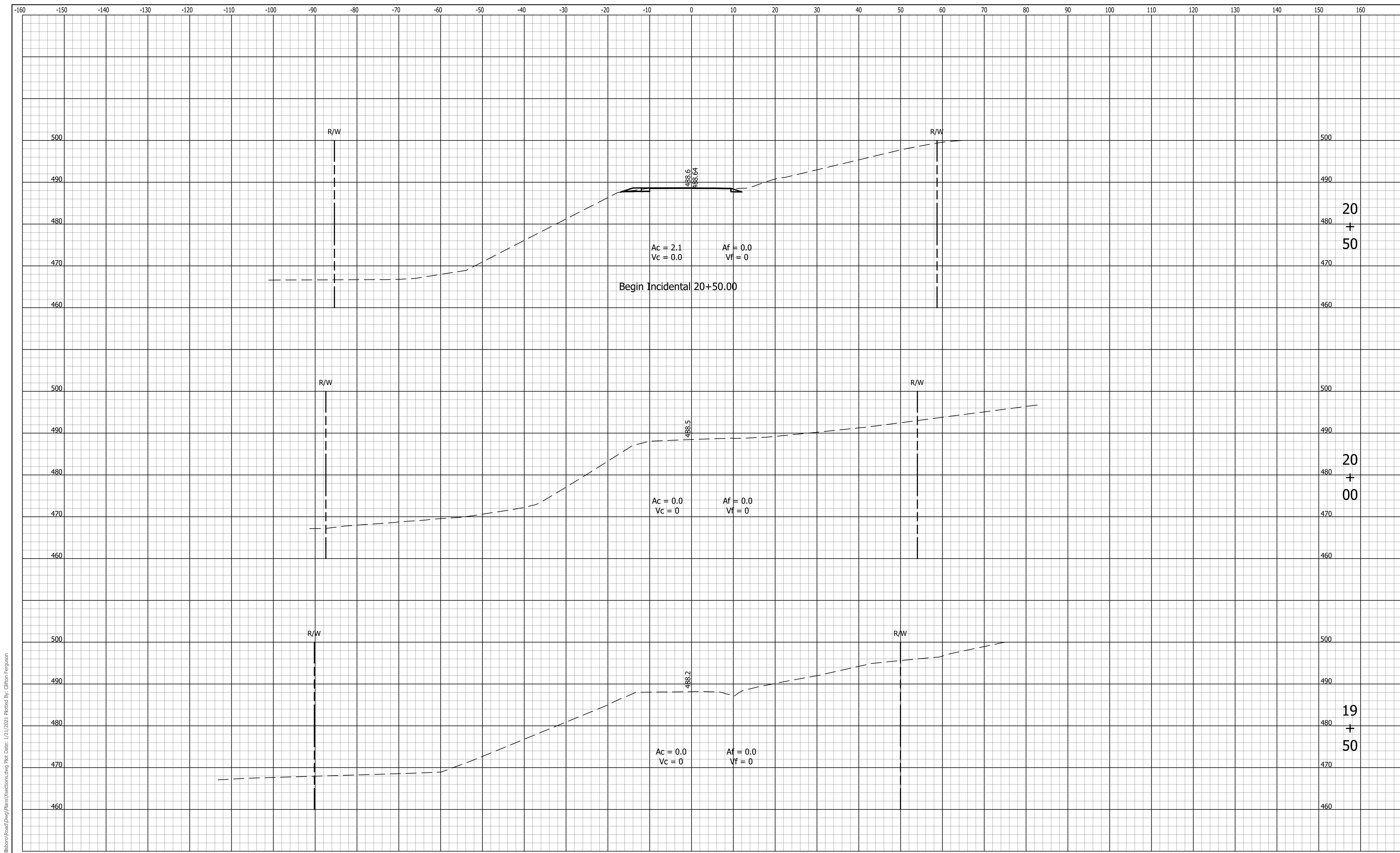


8440 Allison Pointe Boulevard, Suite 200
 Indianapolis, IN 46250
 Phone 317-895-2585
 www.ucindy.com

RECOMMENDED FOR APPROVAL	DESIGN ENGINEER	DATE
DESIGNED: <u>HEK</u>	DRAWN: <u>MEH</u>	
CHECKED: <u>JAR</u>	CHECKED: <u>JAR</u>	

INDIANA DEPARTMENT OF TRANSPORTATION
APPROACH TABLE DETAILS

HORIZONTAL SCALE	BRIDGE FILE
N/A	N/A
VERTICAL SCALE	DESIGNATION
N/A	1702959
SURVEY BOOK	SHEETS
	9 of 14
CONTRACT	PROJECT
R-40889	1702959



File Name: P:\RD\CD\18-118 Lower Dilboro\Road\Draw\Plan\Sections.dwg Plot Date: 1/21/2021 Plotted By: Clinton Ferguson



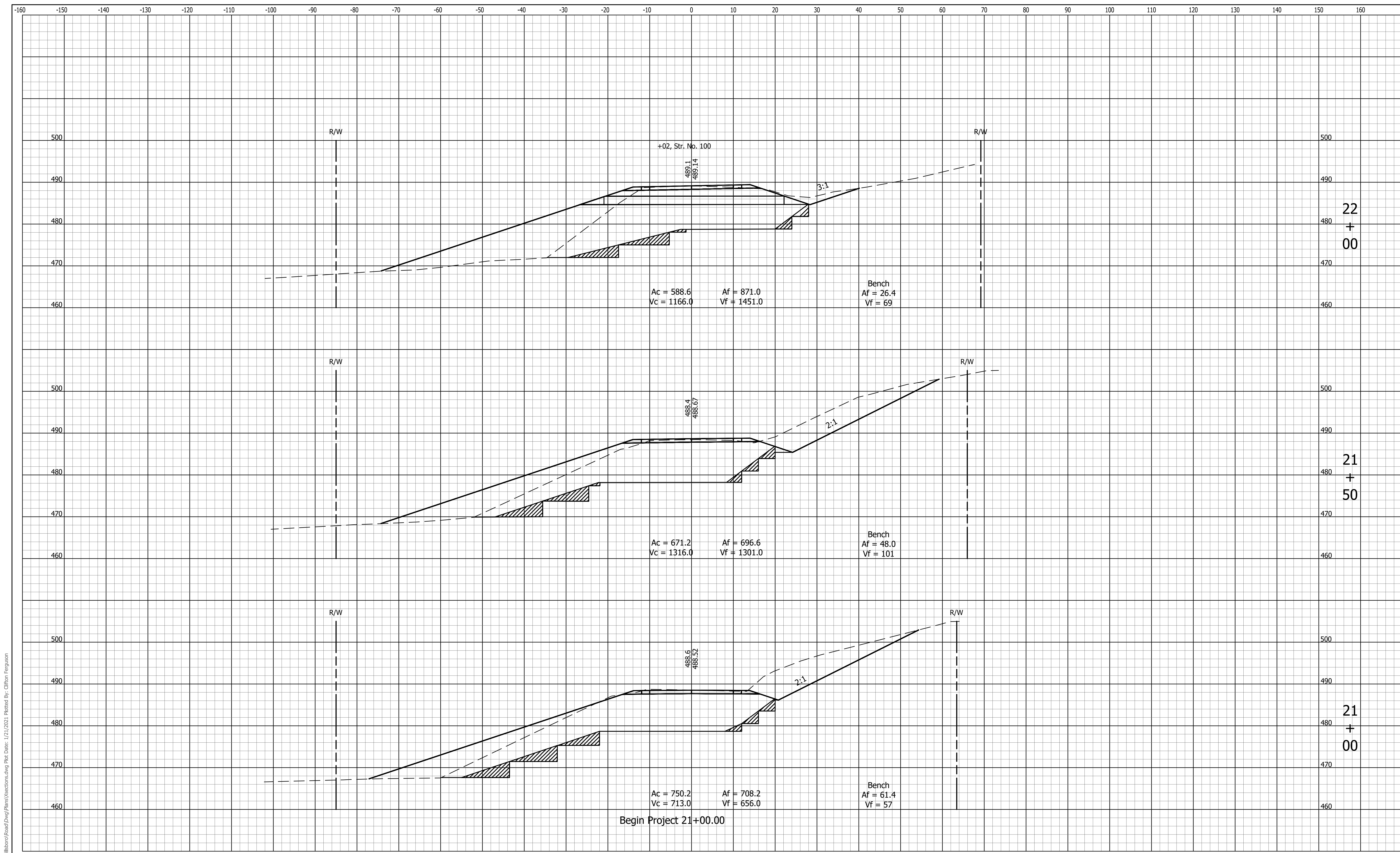
8440 Allison Pointe Boulevard, Suite 200
 Indianapolis, IN 46250
 Phone 317-895-2585
 www.ucindy.com

RECOMMENDED FOR APPROVAL _____		DESIGN ENGINEER _____		DATE _____	
DESIGNED: HEK	DRAWN: MEH				
CHECKED: JAR	CHECKED: JAR				

INDIANA
 DEPARTMENT OF TRANSPORTATION

CROSS SECTIONS
 LINE PR-A

HORIZONTAL SCALE 1" = 10'	BRIDGE FILE N/A
VERTICAL SCALE 1" = 10'	DESIGNATION 1702959
SURVEY BOOK	SHEETS
	10 of 14
CONTRACT R-40889	PROJECT 1702959



File Name: P:\RD\CD\18-118 Lower Dilboro\Road\Draw\Plan\Sections.dwg Plot Date: 1/21/2021 Plotted By: Clifton Ferguson



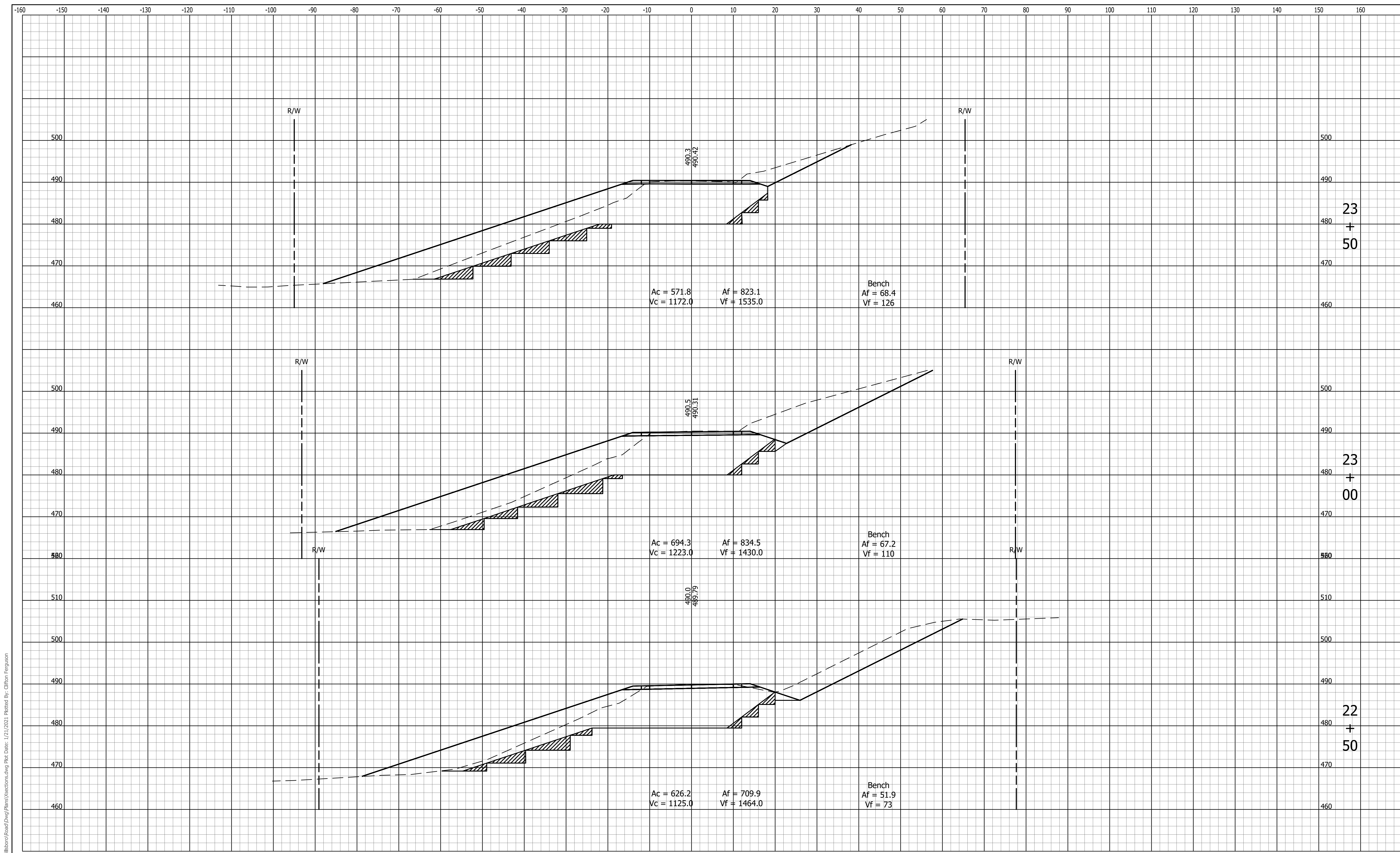
8440 Allison Pointe Boulevard, Suite 200
 Indianapolis, IN 46250
 Phone 317-895-2585
 www.ucindy.com

RECOMMENDED FOR APPROVAL _____		DESIGN ENGINEER _____		DATE _____	
DESIGNED: HEK	DRAWN: MEH				
CHECKED: JAR	CHECKED: JAR				

INDIANA
 DEPARTMENT OF TRANSPORTATION

CROSS SECTIONS
 LINE PR-A

HORIZONTAL SCALE 1" = 10'	BRIDGE FILE N/A
VERTICAL SCALE 1" = 10'	DESIGNATION 1702959
SURVEY BOOK -	SHEETS 11 of 14
CONTRACT R-40889	PROJECT 1702959



File Name: P:\RD\CD\18-118 Lower Dilboro\Road\Draw\Plan\Sections.dwg Plot Date: 1/21/2021 Plotted By: Clinton Ferguson



8440 Allison Pointe Boulevard, Suite 200
 Indianapolis, IN 46250
 Phone 317-895-2585
 www.ucindy.com

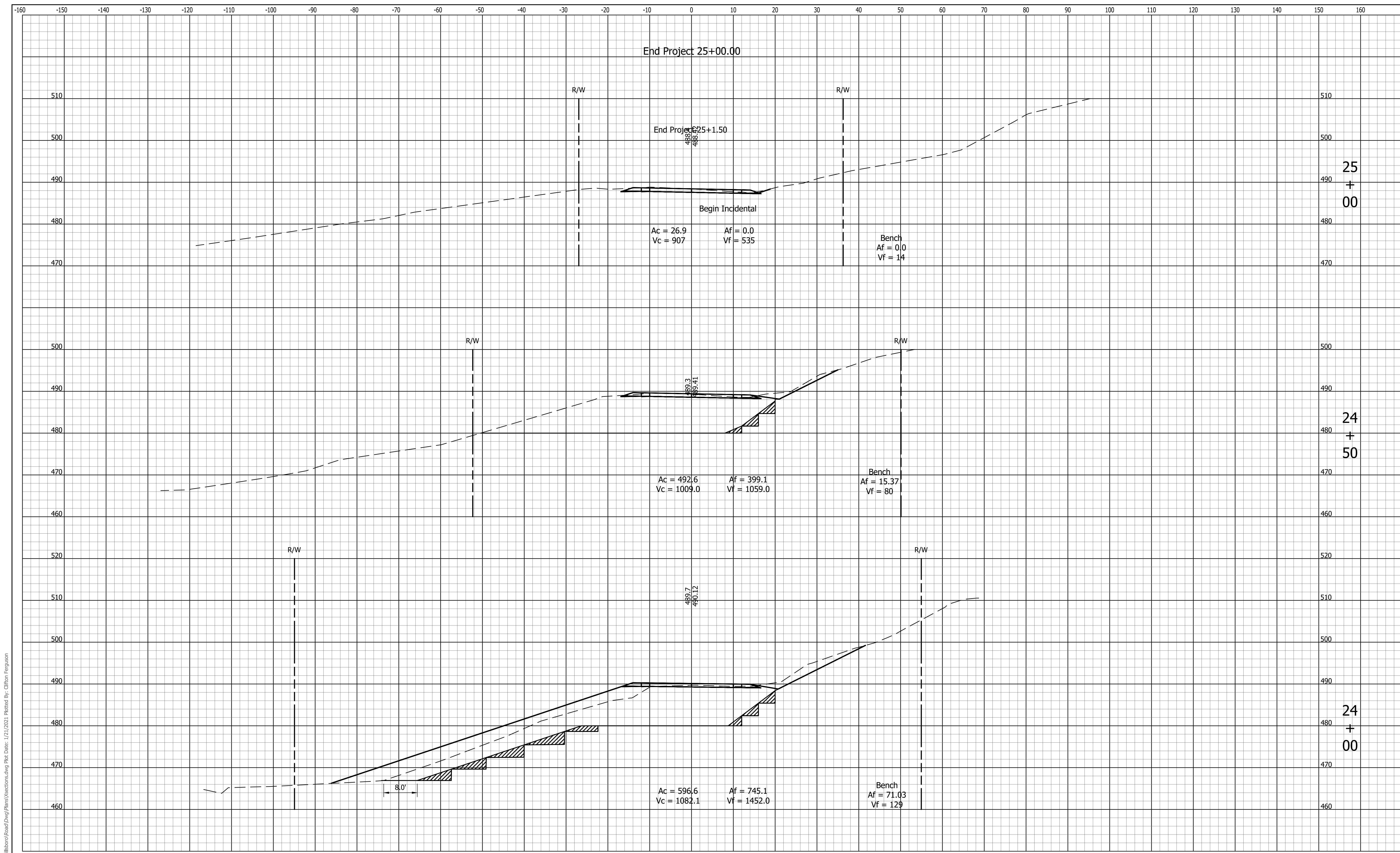
RECOMMENDED FOR APPROVAL _____
 DESIGN ENGINEER _____ DATE _____

DESIGNED: HEK DRAWN: MEH
 CHECKED: JAR CHECKED: JAR

INDIANA
 DEPARTMENT OF TRANSPORTATION

CROSS SECTIONS
 LINE PR-A

HORIZONTAL SCALE 1" = 10'	BRIDGE FILE N/A
VERTICAL SCALE 1" = 10'	DESIGNATION 1702959
SURVEY BOOK	SHEETS
	12 of 14
CONTRACT R-40889	PROJECT 1702959



File Name: P:\RD\CDD\18-118 Lower Dillboro\Road\Draw\Plan\Sections.dwg Plot Date: 1/21/2021 Plotted By: Clinton Ferguson

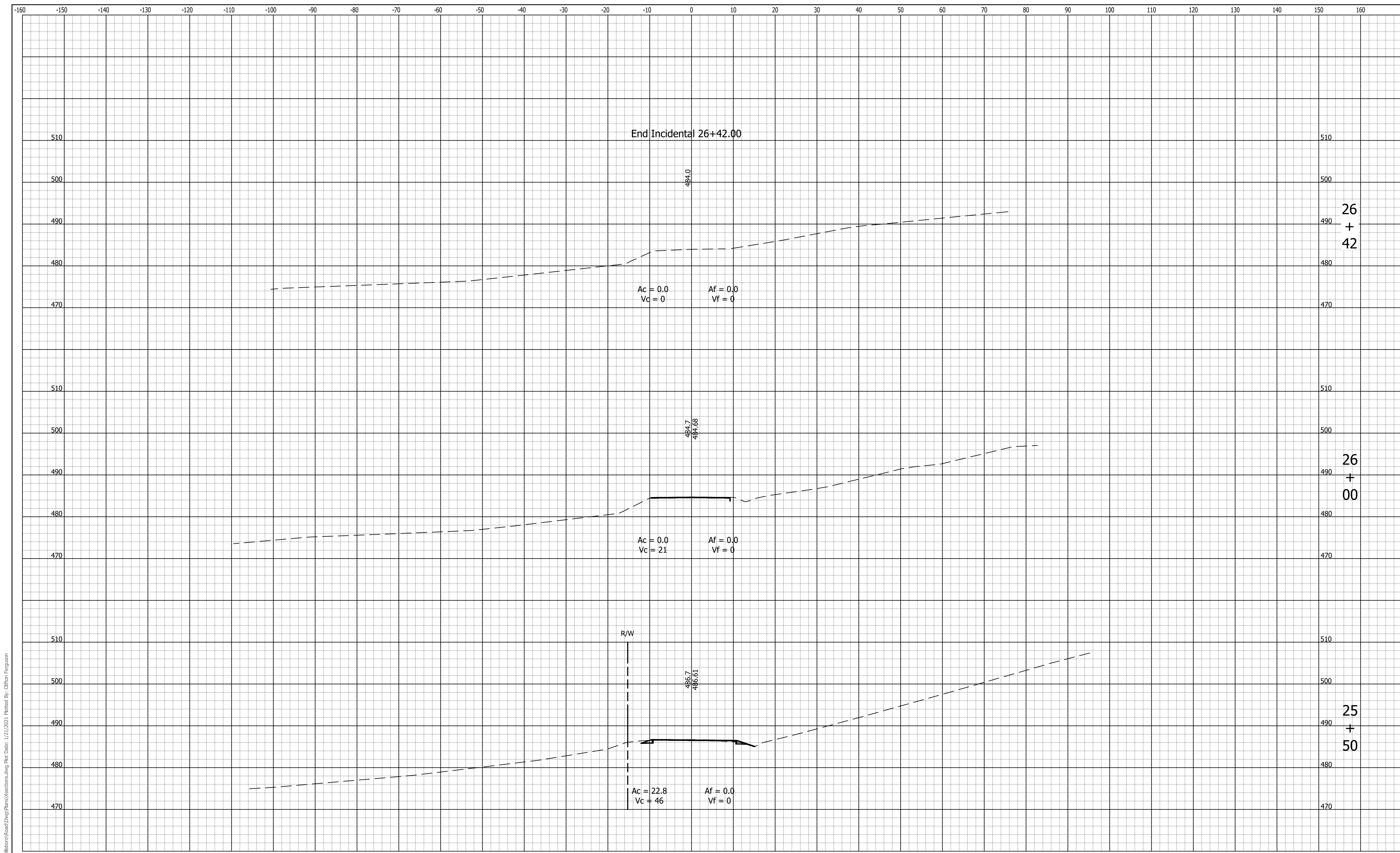


8440 Allison Pointe Boulevard, Suite 200
 Indianapolis, IN 46250
 Phone 317-895-2585
 www.ucindy.com

RECOMMENDED FOR APPROVAL _____		DESIGN ENGINEER _____		DATE _____	
DESIGNED: HEK	DRAWN: MEH				
CHECKED: JAR	CHECKED: JAR				

INDIANA
 DEPARTMENT OF TRANSPORTATION
 CROSS SECTIONS
 LINE PR-A

HORIZONTAL SCALE 1" = 10'	BRIDGE FILE N/A
VERTICAL SCALE 1" = 10'	DESIGNATION 1702959
SURVEY BOOK -	SHEETS 13 of 14
CONTRACT R-40889	PROJECT 1702959



26
+

26
+

25
+



8440 Allison Pointe Boulevard, Suite 200
Indianapolis, IN 46250
Phone 317-895-2585
www.ucindy.com

RECOMMENDED FOR APPROVAL _____	
DESIGNED: HEK	DRAWN: MEH
CHECKED: JAR	CHECKED: JAR

INDIANA
DEPARTMENT OF TRANSPORTATION

CROSS SECTIONS
LINE PR-A

HORIZONTAL SCALE 1" = 10'	BRIDGE FILE N/A
VERTICAL SCALE 1" = 10'	DESIGNATION 1702959
SURVEY BOOK	SHEETS
	14 of 14
CONTRACT R-40889	PROJECT 1702959

File Name: P:\RD\CD\18-118 Lower Dilboro\Road\Draw\Plan\Sections.dwg Plot Date: 1/21/2021 Plotted By: Clinton Ferguson