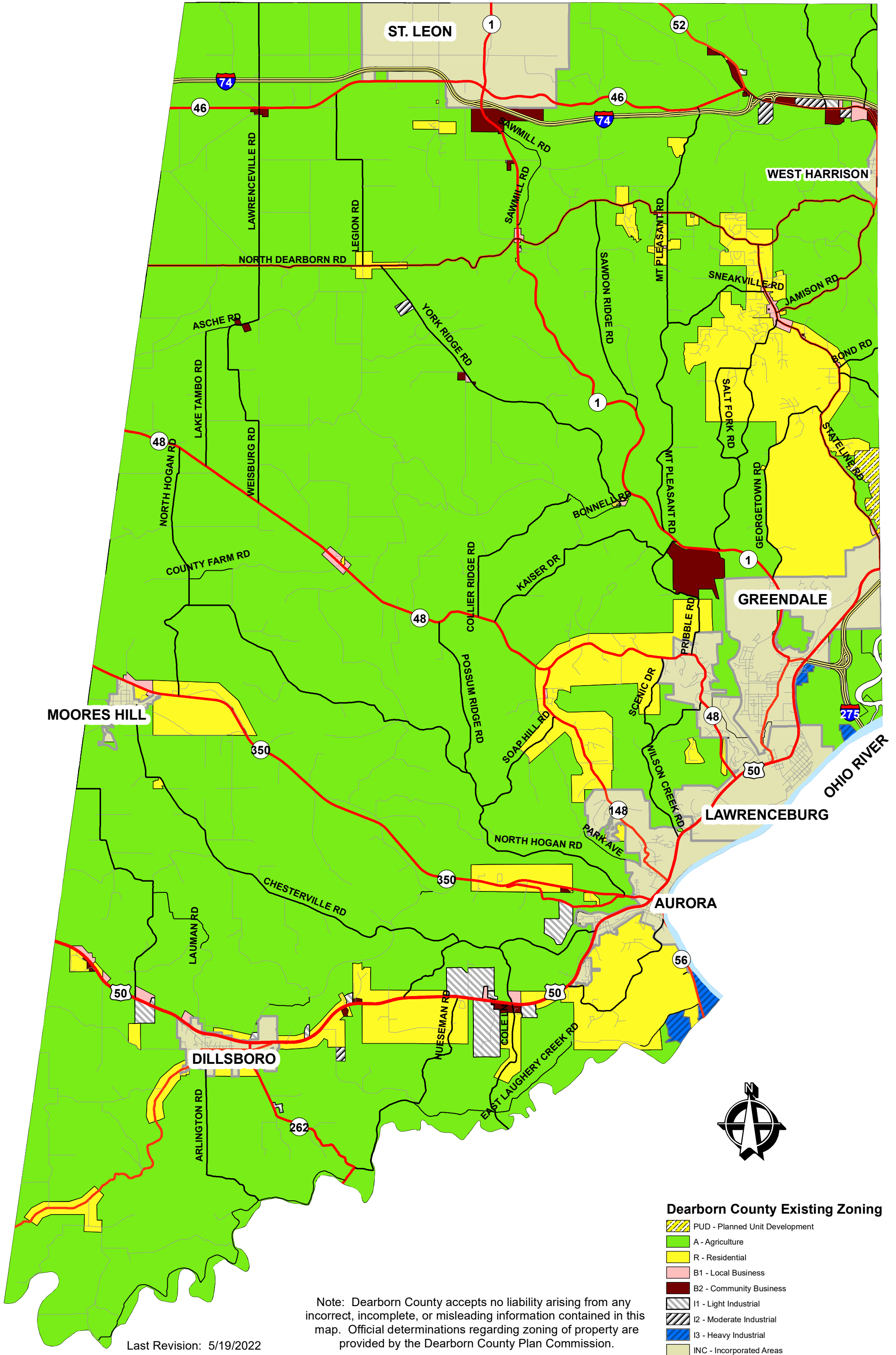








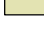


DEARBORN COUNTY ZONING MAP



Dearborn County Existing Zoning

-  PUD - Planned Unit Development
-  A - Agriculture
-  R - Residential
-  B1 - Local Business
-  B2 - Community Business
-  I1 - Light Industrial
-  I2 - Moderate Industrial
-  I3 - Heavy Industrial
-  INC - Incorporated Areas

Note: Dearborn County accepts no liability arising from any incorrect, incomplete, or misleading information contained in this map. Official determinations regarding zoning of property are provided by the Dearborn County Plan Commission.

Last Revision: 5/19/2022