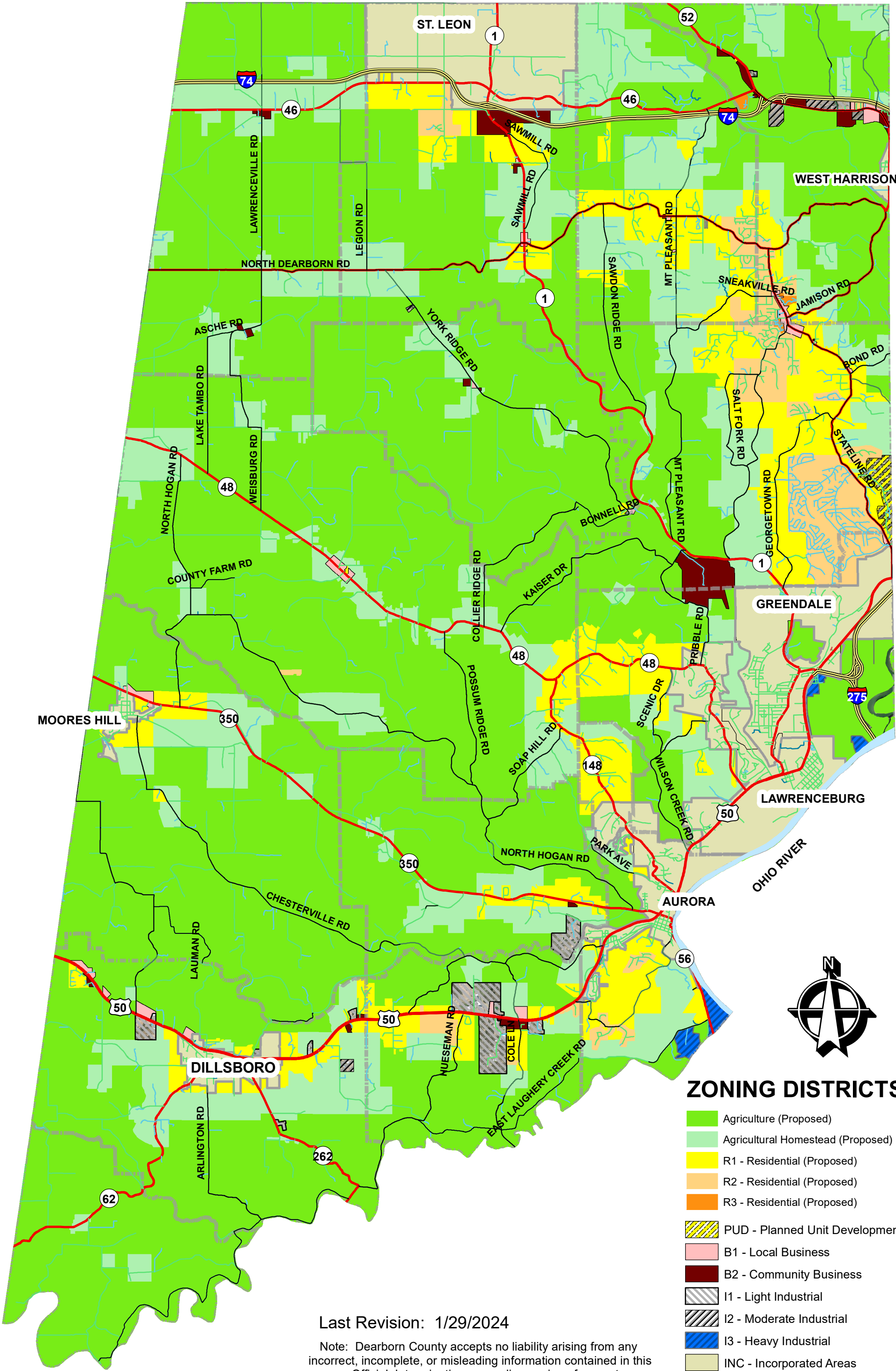


PROPOSED DEARBORN COUNTY ZONING MAP



Last Revision: 1/29/2024

Note: Dearborn County accepts no liability arising from any incorrect, incomplete, or misleading information contained in this map. Official determinations regarding zoning of property are provided by the Dearborn County Plan Commission.

ZONING DISTRICTS

- Agriculture (Proposed)
- Agricultural Homestead (Proposed)
- R1 - Residential (Proposed)
- R2 - Residential (Proposed)
- R3 - Residential (Proposed)
- PUD - Planned Unit Development
- B1 - Local Business
- B2 - Community Business
- I1 - Light Industrial
- I2 - Moderate Industrial
- I3 - Heavy Industrial
- INC - Incorporated Areas