

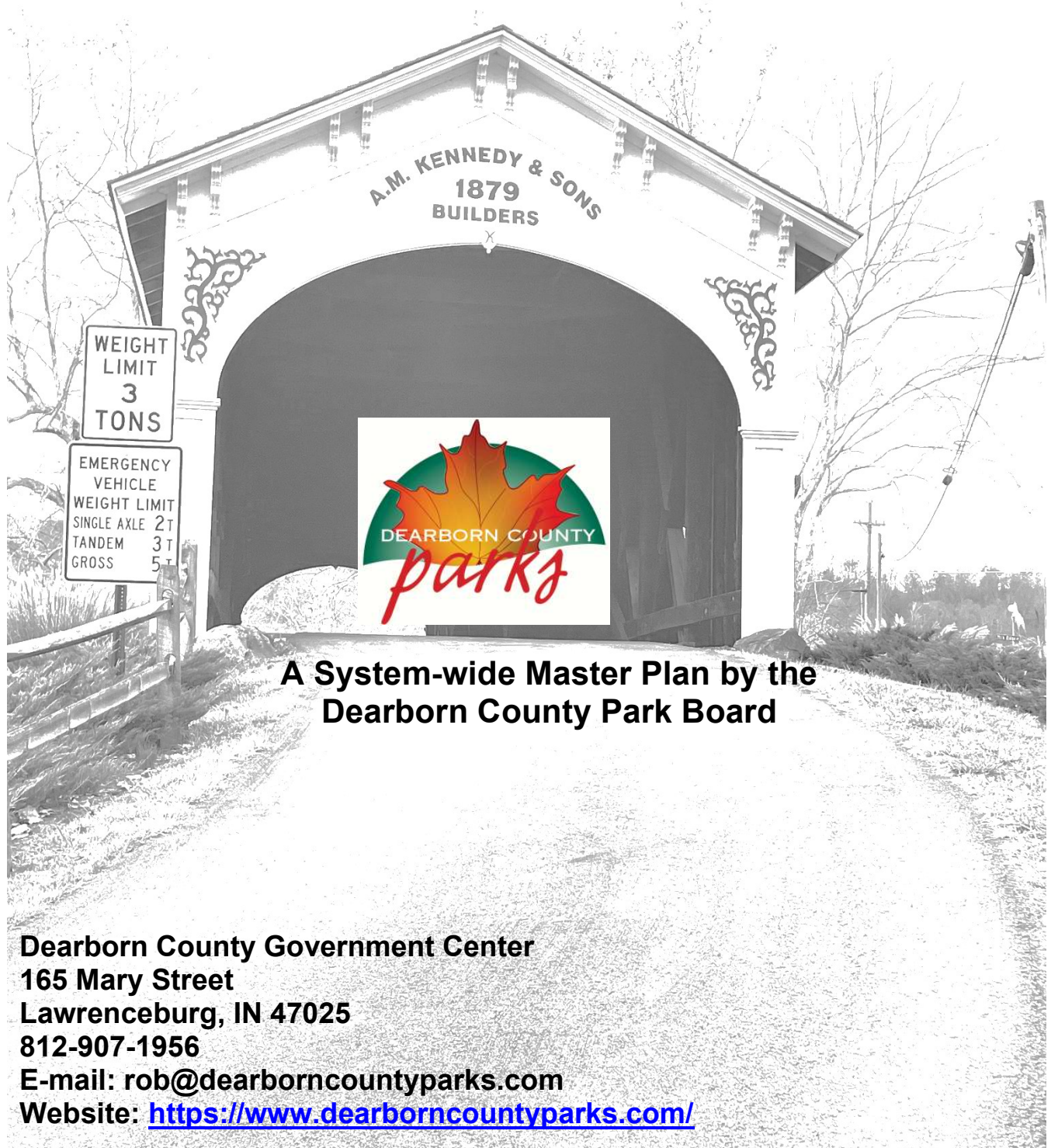
The Dearborn County Park Board invites all residents and stakeholders to review the draft 5-year Park Master Plan and share you feedback.

This plan outlines a long-term vision for improving park facilities, recreational opportunities, and natural spaces to better serve our community. Public input is essential to ensure the plan reflects community needs and priorities, so we encourage you to review the document and provide your comments and suggestions before it is finalized. Please submit all feedback no later than March 1, 2026. Thank you in advance for your time and participation. Please forward all feed back by clicking on the email ndaily@dearborncounty.com.

You can also visit the Park's Website at www.dearborncountyparks.com and comment directly from the front page of their website.

Final Draft

Dearborn County, Indiana 5-year Park and Recreation Master Plan 2026 To 2030



**A System-wide Master Plan by the
Dearborn County Park Board**

**Dearborn County Government Center
165 Mary Street
Lawrenceburg, IN 47025
812-907-1956
E-mail: rob@dearborncountyparks.com
Website: <https://www.dearborncountyparks.com/>**

**Dearborn County Parks
5-Year Master Plan
2026-2030**

Table of Contents

Contents

Introduction	3
Dearborn County Area	4
Goals of Dearborn County Master Plan.....	6
Dearborn County Park Board.....	8
The Park Board History.....	8
Park Board Members.....	8
Park Board Office.....	9
Finances and Budget.....	9
Mission.....	10
Volunteers, Organizations and Contract Maintenance.....	10
Dearborn County Parks--Man-made, Historical and Cultural	
Natural Features.....	12
Man-Made.....	15
Historic Park Events and Features.....	15
Cultural and Events.....	16
Transportation Links.....	18
Demographics and Social Economic Factors.....	20
Park Accessibility Assessment	
Statement of Accessibility.....	25
Current and Proposed Accessibility.....	25
Public Participation	
Public Meetings/Workshops.....	27
Survey and Results.....	29
Final Presentation.....	36
Needs Analysis	
Method.....	37
Issues from Collected Input.....	37
Facility Inventory and Programs	
Existing Park Locations.....	39
County Farm Park.....	40
Rullman Wildlife Preserve.....	40

**Dearborn County Parks
5-Year Master Plan
2026-2030**

Bright Meadows Park.....	41
Guilford Covered Bridge Park.....	41
Gladys Russell Park.....	41
Dearborn County Public Recreational Areas.....	42
Priorities, Action and Recommendations	
Overall Park Priorities.....	43
County Farm Park.....	44
Rullman Wildlife Preserve.....	51
Bright Meadows Park.....	56
Guilford Covered Bridge Park.....	64
Gladys Russell Park.....	70
Future Park Planning	
North Dearborn Community Park.....	76
Future Park Board Activities and Initiatives.....	76
Board Resolution and Adopting of Final Plan	
Final Plan Presentation.....	78
Adopted Plan and Resolution.....	79
Appendix	
Survey Example	
Full listing of survey written answers	

Final Draft

**Dearborn County Parks
5-Year Master Plan
2026-2030**

Introduction

Dearborn County, Indiana Parks and Recreation Master Plan is an update of the 2012-2016 Inventory and Priority 5-Year Planning Guide, which serves as a framework for the planning, development, and administration of park, recreation, and open-space areas in the unincorporated areas of Dearborn County, Indiana. These areas are overseen by the Dearborn County Park Board. This plan will evaluate historical events, natural features, economic and population trends, existing park facilities, and anticipated future needs. Together, these factors inform the priorities and guide the development of the county's park system over the next five years.

Park and recreation planning must be an ongoing, continuous process. Periodic reviews are necessary to ensure that the county's goals and objectives remain aligned with community priorities and that the plan continues to reflect the best course of action to meet the community's evolving needs.

Final Draft

**Dearborn County Parks
5-Year Master Plan
2026-2030**

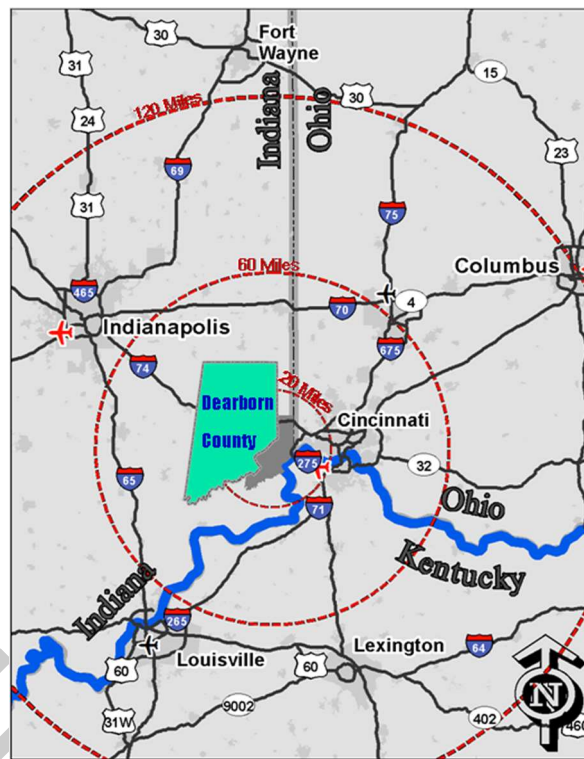
The Planning Area of Dearborn County

This Master Plan is designed to service all citizens of Dearborn County, particularly those residing in the unincorporated areas. These areas include our rural and historic platted settlements such as Bright, Guilford, Manchester, Logan, Dover, Yorkville, New Alsace, Sparta and Farmers Retreat, along with many others dispersed throughout the county's roads, hills and valleys.

Location

The jurisdiction of the Dearborn County Park Board follows the County boundaries depicted on the County map shown **IMAGE 2**. Dearborn County is situated in the southeastern corner of Indiana along the Ohio River adjacent to the States of Ohio and Kentucky as shown in **IMAGE 1**. The County covers 306 square miles and is divided into 14 townships and seven incorporated towns. Lawrenceburg, the county seat, is approximately 20 miles west of Cincinnati, 80 miles northeast of Louisville, and 90 miles southeast of Indianapolis. Dearborn County is one of the seven counties in the Cincinnati Standard Metropolitan Statistical Area defined by the U.S. Census Bureau. Dearborn County is a member of OKI the Ohio Kentucky Indiana Regional Council of Governments.

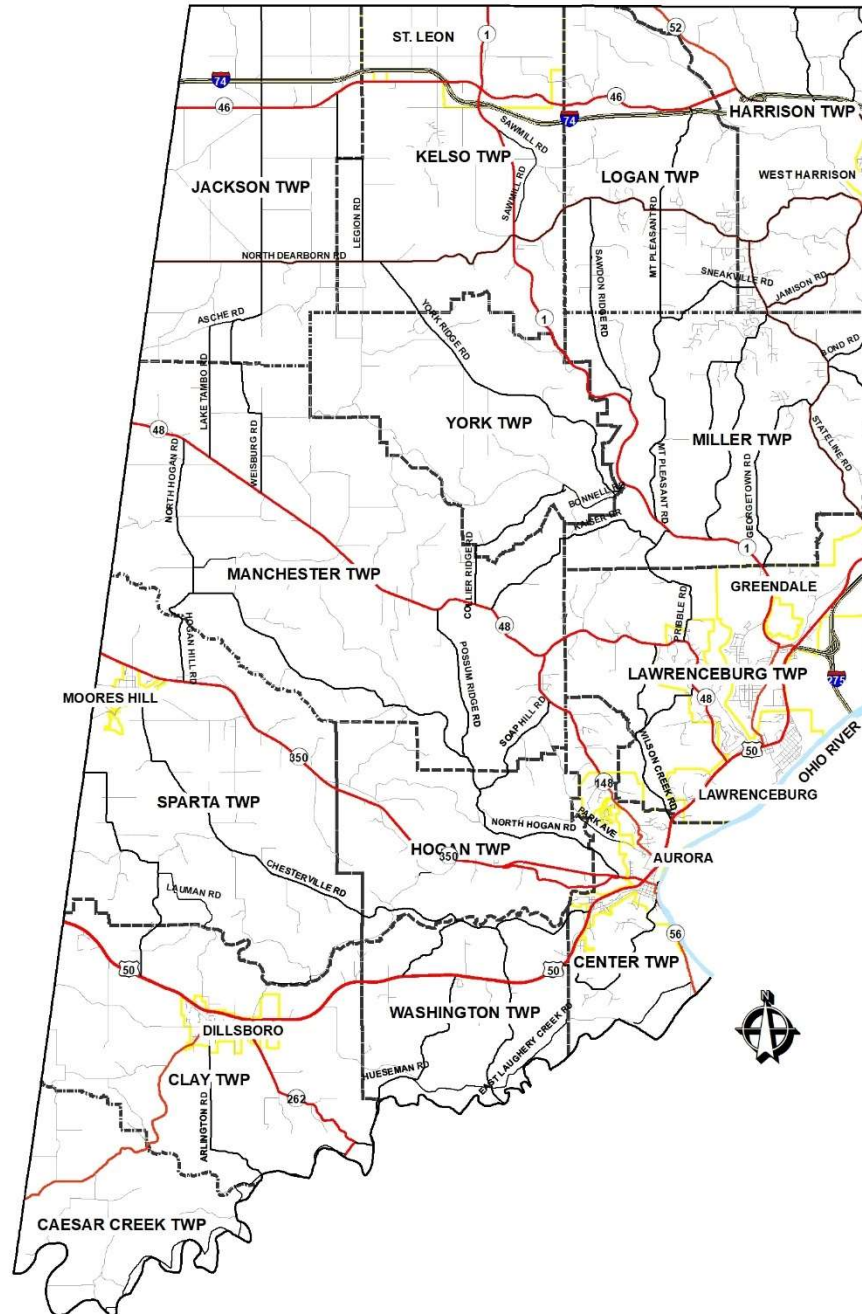
IMAGE 1—Dearborn County location in the Tri-State area of Cincinnati



**Dearborn County Parks
5-Year Master Plan
2026-2030**

IMAGE 2—Dearborn County showing Townships and Incorporated areas

DEARBORN COUNTY, INDIANA



Goals of the Dearborn County Parks Master Plan

The plan encompasses improvements needed to existing facilities, the development of new recreational areas to the parks, finding ways to foster the wants of the communities in the park system and examine the fiscal requirements and impacts of these improvements. With a clear understanding of these improvements and needs the board's activities can be directed towards the future recreational needs of the County. Furthermore, the plan seeks to protect and improve natural landscapes, conserving ecosystems and biodiversity for future generations. It also considers practical aspects like safety, maintenance, and inclusivity, aiming to create parks that are not only functional but also welcoming to people of all ages, abilities, and backgrounds. Ultimately, the Park Master Plan serves as a strategic framework to balance growth and conservation, ensuring the long-term vitality of public spaces.

The Dearborn County Park Board has agreed on the following goals for the 5-Year Parks and Recreation Plan:

Recreation and Amenities

- Develop improvements for new opportunities for exercise and fitness of all age groups throughout the park system.
- Develop an action plan of priorities with implementation of goals for each park.
- Develop a wide range of recreational opportunities and diversifying the types of activities available with a plan to attract a broad spectrum of users

Environmental Stewardship

- Protecting and managing the natural resources of the parks and conserving green space and native vegetation.
- Protecting water resources throughout the refuge parks.
- Provide education opportunities to citizens and local students of environmental benefits for preservation.
- Integrate sustainable practices into every aspect of park development and maintenance.

Accessibility and Inclusivity

- Improve accessibility within the parks with designs for ease of access ensuring all people have equal opportunities to use the parks, facilities and services, regardless of background, ability and economic status.
- Determine the level of accessibility that is achievable at each park for the provided amenities and make this a part of every future improvement to be included in the process.

**Dearborn County Parks
5-Year Master Plan
2026-2030**

Community Engagement

- Gather feedback and input from the citizens of Dearborn County through a variety of formats to ensure all residents are represented during the planning process.
- Improve the efforts gathering volunteers for working on projects, public input, routine maintenance tasks, create group “adopt” a task program, and clean up days.
- Increasing coordination with local organizations on programs and improvements of the park’s system. By incorporating the input and collaboration of local organizations, communities are empowered to take an active role in shaping the spaces that directly impact their quality of life.

Park Growth and Maintenance

- Examining new areas of growth to determine social conditions of the community to analyze the needs for new park locations throughout the County.
- Explore the opportunity for staff hiring to create positions to assist on daily functions and operations of the Park’s system.
- Consider all financial resources available at all stages of planning, acquisition, development, operation and maintenance.
- Review this Master Plan on a regular basis with regard to growth and development of the County. Coordinate efforts with the County Comprehensive Land Use Plan and Zoning.
- Analyze the parks and public facilities currently provided to the County residents, which will provide for future financing and budgeting figures for each park.
- Examining area of purchase for expansion of existing park and analyze areas of connectivity between County Parks and other recreational facilities and neighborhoods.

**Dearborn County Parks
5-Year Master Plan
2026-2030**

The Dearborn County Park Board

Park Board History

The Dearborn County Park Board created the first Master Plan in 1967 and was reorganized in November, 1982 in accordance with the provisions of the 1981 Indiana Park and Recreation Law (IC-36-10-3) and all appointments are made in accordance with the law. The Board functions as a semi-autonomous agency of the County government. The board consist of 5 board members (serving 4-year terms) which are dedicated citizens of Dearborn County who strive to encourage the benefits that parks provided the community. The parks are maintained by the volunteered Board members along with the assistance of the Dearborn County Highway Department. There are no paid employees directly staffed by the Park Board.

Park Board Members

The board members area selected as appointed members by the County Commissioners (One member), County Council (two members) and Circuit Judge (two members) include:

Rob Calvert, President—Steward of Rullman Wildlife Refuge Park (Council Appointed)

Term: Jan. 2, 2025 to Jan. 2, 2029

Kevin Vincent, Vice President—Steward of County Farm Park (Council Appointed)

Term: Jan. 2, 2023 to Jan. 2, 2027

Dan Valas, Secretary—Steward of Guilford Covered Bridge Park (Circuit Judge Appointed)

Term: Jan. 2, 2024 to Jan. 2, 2028

Gene Cleary, Treasurer—Steward of Bright Meadows Park (Circuit Judge Appointed)

Term: Jan. 2, 2022 to Jan. 2, 2026

Steve Lovins, Board Member—Steward of Gladys Russell Park (Commissioner Appointed)

Term: Jan. 2, 2025 to Jan. 2, 2029

Vacant Position, Board Member—Purdue Extension Office

Term: As long as the person holds the position with the extension office

**Dearborn County Parks
5-Year Master Plan
2026-2030**

Park Office

The main office for the parks department is in the Dearborn County Government Center, located at 165 Mary Street, Lawrenceburg, IN 47025. The phone is: 812-907-1956.

E-mail: rob@dearborncountyparks.com

Website: <https://www.dearborncountyparks.com/>

Finances and Budget

Park Board finance tracking, invoice payment and understanding of county financial process has improved. All Park Board members should have a basic understanding of budget planning, project cost estimating and fund-raising options. The funding of annual regular operations and long-range development projects will remain a significant issue.

The Dearborn County Parks Board has three budgets

Year	Park General Fur	Park and Recreation	Riverboat Revenue	County Farm
2020	\$50,765.00	\$189,907.10	\$28,899.63	\$10,006.36
2021	\$54,765.00	\$127,942.10	Unfunded	\$24,500.00
2022	\$71,023.08	\$78,138.02	Unfunded	\$14,952.76
2023	\$119,341.24	\$45,880.96	Unfunded	\$13,577.80
2024	\$121,459.00	\$161,500.00	Unfunded	\$11,180.00
2025	\$180,750.00	\$250,000.00	Unfunded	\$11,180.00
2026 (projected)	\$180,749.00	Unfunded	Unfunded	\$11,180.00

Dearborn County Parks 5-Year Master Plan 2026-2030

Mission

- The Mission of the DCP Board is:
“To provide and improve the physical, cultural and economic environment of Dearborn County by providing the maximum enjoyment and satisfaction to the residents and visitors through natural and man-made features in the landscape of designated park areas. With out breathtaking hilltops, landscapes, and rivers as natural assets, we will invest in amenities, extensive trails, and park enhancements to support these assets, positioning our region as a premier destination for outdoor enthusiasts and a retreat to simpler living.”

Volunteers, Organizations and Contract Maintenance

Contracting maintenance services with local citizens to support the park system can be an effective and mutually beneficial approach to ensure the upkeep of parks while fostering community involvement. By partnering with local residents, municipalities can tap into the knowledge and enthusiasm of those who are most familiar with the area, its needs, and its challenges. These individuals or small local businesses could be contracted to handle routine tasks such as landscaping, trash removal, tree care, playground inspections, and general repairs. This localized model not only provides cost-effective solutions but also empowers the community by creating jobs and offering opportunities for residents to take an active role in maintaining their shared public spaces. Additionally, local contractors are more likely to provide personalized care and attention to detail, ensuring that the parks reflect the unique values and preferences of the community. This partnership can help create a sustainable and long-term system for park maintenance, while also strengthening the relationship between local government and its residents, ensuring parks remain vibrant and accessible for everyone.

Working with local organizations is a powerful strategy for fostering the growth and expansion of a parks system. These partnerships can help leverage additional resources, expertise, and community engagement, ensuring that parks evolve to meet the needs of residents while promoting environmental sustainability. Local nonprofits, schools, environmental groups, and community organizations often bring specialized knowledge and passion for specific aspects of park development, such as ecological conservation, outdoor education, and recreational programming. By collaborating with these groups, municipalities can create shared initiatives—such as tree planting campaigns, educational programs, or fitness events—that not only enhance the parks but also build a deeper sense of community ownership and stewardship.

Additionally, local organizations may be able to secure private funding or grants that can support the development of new park amenities or the expansion of existing spaces. For example, partnerships with local businesses can result in sponsorships, donations, or volunteer-led projects that increase both the quality and quantity of park offerings. Schools and youth groups can help with organizing clean-ups, building community

**Dearborn County Parks
5-Year Master Plan
2026-2030**

gardens, or hosting nature walks, while environmental organizations can assist in conservation efforts and habitat restoration.

Dearborn County Park Board has begun to reach out to organizations to collaborate to foster a culture of collective responsibility and ensuring the parks serve as a dynamic and thriving spaces for all community members. The Park Board would like to provide thanks to those organizations as these relationships continue to grow:

Dearborn County Commissioners	Dearborn County Council	Bright Area Business Association
Dunevant Family	Purdue Extension Office	Dearborn County Foundation
Dearborn County Convention, Visitor & Tourism Bureau		East Central School Corporation FFA
OKI Regional Council of Governments		
Dearborn County Redevelopment Commission		
Dearborn County Masters Garden Club		

Dearborn County Park Board is always searching for volunteers to provide with incredible and valuable assistance to the increasing demands for maintaining parks and recreation in Dearborn County. The Dearborn County Parks system can always use more help, and no matter what your skills, interests, or abilities are, we can find fun ways to put them to use. The Park Board invites all interested persons to participate in our parks volunteer system; please contact Dearborn County Park Board President, at 812-907-1956 for more information.

Final Draft

Dearborn County Parks—Man-made, Historical & Cultural

Natural Features

Natural features are critical to parks and recreation, especially with the majority of their parks being donated land consisting of woodlands and farm ground. Water, vegetation and soil are the raw materials from which the County parks are made. On the other hand, natural features can restrict not only recreation, but other types of development as well. Dearborn County is endowed with a varied landscape. Situated in the Dearborn Upland, a physiographic region covering about 1,800 square miles of southeastern Indiana, the county can be conveniently divided into three areas: the rolling northwest upland, the high relief, steep-walled hill and valley central zone; and the Ohio River floodplain in the southeast.

Some of the soil associations are found along the major stream valleys are classified as prime agricultural land due to their depth fertility levelness, moisture retention and lack of erosion necessary for good crop performance. Such desirable soils share a number of characteristics compatible with the needs of urban development. While it is not realistic to assume that no development should occur here, it is important to identify this land as a productive and scarce commodity. Where possible urban development, including recreation should take place on less essential land. The narrow ridge tops present perhaps the best potential for development. This area is usually well drained and suitable for urban activities where sewers are available. A comprehensive survey prepared by the Soil Conservation Service in Dearborn County is available. This document contains a wealth of information and should be consulted when specific park site plans are being developed.

Ground water availability varies widely across the county and generally follows the fluctuations in depth to bedrock which varies from 0 on steep hillsides to 50 feet or more along the Ohio River. The Whitewater and Ohio floodplains can yield 1,000 or more gallons per minute. Other stream valleys can produce between 50 and 100 gallons. The remainder of the county is poor; yields of less than 5 gallons per minute are possible but clay precludes water development in most areas. Hence water must be piped in. The ability to dig productive wells in only limited areas is a major determinant in the location and type of urban development throughout much of southern Indiana.

Several principal streams flow through Dearborn County. The East, West and mainstream of Tanner' Creek covers approximately 104 square miles, Laughery Creek covers approximately 443 square miles and lastly the Whitewater and Ohio Rivers. Except for the Ohio River, none of the streams have been extensively modified by ditching or damming. Laughery Creek is still in a remarkably pristine state.

Dearborn County Parks 5-Year Master Plan 2026-2030

Although only flowing through Dearborn County for eight miles, the Ohio River is the region's most notable natural feature. But there are also several notable creeks, Laughery Creek, Tanners Creek, Hogan Creek, through the County that create excellent areas of recreational opportunities including hiking, bicycle pathways, canoeing, and fishing. There is an unnamed tributary to the Little Hogan Creek that begins at the pond located at the Gladys Russell Park. The Little Hogan Creek runs through the County Farm Park and is lined with floodplain areas along the creek throughout the wooded portion of the park. The Rullman Park is boarded by the Fly Run Creek with associated floodplain areas throughout the wooded portions of the park. Guilford Covered Bridge Park lies on the creek side of Tanners Creek and is located within the floodplain. The Bright Meadows Community Park does not have any creek access or water features located within the park, but there are drainage issues that need to be addressed.

Second growth woodland now covers a significant percent of the county, although much of the forest acreage is on hillsides. Several areas including County Farm, Gladys Russell and Rullman Parks are superlative examples of mature forests.

Land suitable for naturalistic parks is relatively plentiful in Dearborn County. Parks developed in areas with existing natural asset, such as wooded floodplains; do not require expensive site modifications and landscaping that would otherwise be necessary to recreate a natural environment.

The majority of the County Farms are great examples of the preservation of woodland growth and mature forest within the County. This land is suitable for naturalistic parks not requiring expensive site modifications to allow the residents of Dearborn County and visitors to enjoy the beauty that nature produces. The visual impact of combined natural and manmade features should also be considered an area source worthy of conservation and management.

The park board has not yet undertaken a comprehensive effort to address invasive species within the parks, but it acknowledges that this issue is a critical aspect of maintaining healthy and sustainable ecosystems. Invasive species, which often outcompete native plants and disrupt local wildlife habitats, can negatively impact the biodiversity and ecological balance of park environments. While the board has primarily focused on other aspects of park maintenance, such as amenities and recreational programming, it recognizes that the presence of invasive species poses a growing challenge. The need to develop a strategic plan for monitoring, controlling, and eradicating these species is clear, as early intervention can prevent further ecological degradation and the spread of invasives to other natural areas. The board is committed to exploring effective solutions in collaboration with local environmental experts and community groups, ensuring that park ecosystems remain vibrant, resilient, and supportive of native flora and fauna. Addressing this issue will be a priority in the near future, as the board works toward a more holistic approach to park management.

**Dearborn County Parks
5-Year Master Plan
2026-2030**

A comprehensive description of the natural features, effects, and needs of each park is essential to understanding their unique characteristics and how they contribute to the broader park system. Given that each park is distinct in its landscape, ecological features, and community use, it is crucial to assess and address their individual needs for preservation, improvement, and management. This individualized approach allows for targeted solutions that respect the uniqueness of each park while ensuring they remain accessible, sustainable, and enjoyable for future generations.

By considering the specific natural features of each park—whether that’s unique vegetation, topography, wildlife habitats, or bodies of water—it becomes clear which interventions are needed to protect and enhance their ecological integrity. Additionally, understanding the effects of current land use practices, such as the impact of heavy foot traffic on sensitive habitats or the pressures of overuse on popular recreational areas, will guide the development of sustainable management strategies.

Each park will require its own tailored approach, ensuring that its natural features are preserved, while meeting the demands of the community. Detailed assessments for each park will enable informed decisions on land restoration, maintenance, and potential enhancements, ensuring that all parks in the system thrive for years to come.

County Parks	Acres	Manmade	Water/Creeks	Roads	Woodlands	Tillable
County Farm	308.66	21.5	27	11.5	195.5	53.16
Gladys Russell	116.3	5.5	12	0	98.8	0
Rullman	80	7.7	1.5	0	70.8	0
Covered Bridge	3.10	0.74	1.16	1.2	0	0
Bright Meadows	18.57	12.96	0	1.81	3.8	0

Dearborn County Parks 5-Year Master Plan 2026-2030

Man-made

Man-made features in a park system—such as playgrounds, walking trails, visitor centers, sports fields, restrooms, and cafés—play an important role in improving accessibility, safety, and enjoyment for visitors. These features encourage recreation, education, and tourism, making parks more inclusive for families, seniors, and people with disabilities. Well-designed infrastructure can also help protect natural areas by guiding foot traffic and reducing environmental damage. However, man-made features can have drawbacks, including habitat disruption, increased pollution, noise, and higher maintenance costs. If overdeveloped, they may reduce the natural character of a park and negatively impact wildlife. Balancing built features with conservation is therefore essential to ensure parks remain both functional for people and healthy for the environment.

Gladys Russell, County Farm and Rullman Parks, all provide wildlife refuge and valuable natural features. These parks should be preserved and conserved as much as possible for the enjoyment of both citizens and wildlife. The main challenge is finding a balance between preservation and the addition of man-made facilities, which can improve accessibility and offer meaningful recreational and educational activities without compromising the natural environment.

Guilford Covered Bridge Park represents a blend of natural features, historic significance and man-made recreational facilities. The park lies along the banks of Tanners Creek, providing visitors with an appealing natural water feature. The remainder of the park consists of man-made developed amenities such as shelter, playground, basketball court and a parking area. The Covered Bridge is an historic landmark that draws visitors from across the region, adding cultural value and storytelling to the park experience.

Bright Meadows Community Park is the county's one park that fully fits the traditional concept of a community park. While other parks emphasize natural features, Bright Meadows offers the greatest concentration of man-made facilities. Amenities serve all age groups, providing baseball diamonds, paved walking trail, shelters, bathrooms, basketball courts, pickle ball courts, playground, football field and frisee golf course. The ongoing challenge for this park is reintroducing and enhancing natural elements. Potential improvements include expanding of the pollinating plot, preserving the existing four acres of woodland, and incorporating additional native landscaping throughout the park.

Historic Park Events and Features

Dearborn County's first Park Plan was developed in 1967, and included a recommendation to create a large county park, which led to the establishment of "County Farm" park. Although the original plans were ambitious and costly—and

Dearborn County Parks 5-Year Master Plan 2026-2030

ultimately unrealized due to limited public support and financial support—the effort did result in the county’s first park.

In 1960, the Historical Association proposed refurbishing the Guilford Covered Bridge. After the bridge was decommissioned, the 120-foot-long structure was relocated by crane to its current site. When the Historic Association ran out of funding, the bridge was revived by the Park Board in 1976. This effort formally established the Guilford Covered Bridge Park, with work completed in 1981.

Also in 1981, the Park Board focused on adding the Bright Meadows Committee Park to the County Park system. The park was acquired through the generosity of county school corporations and private land owners. Development of the park occurred through a phasing process and completed in 1995.

Gladys Russell Wildlife Habitat Trust Area was deeded to the Park Board in 1994 by the Indiana Department of Natural Resources. Mrs. Russell had originally donated the land to the State’s Division of Fish and Wildlife, when the State was not able to devote sufficient resources to managing the property, Mrs. Russell had requested the land be donated to the County.

Rullman Wildlife Refuge was obtained in 2007 as donated land from the Rullman Family to be dedicated and known as the Harry and Alma Rullman Wildlife Refuge. This property is the most recent addition to the Dearborn County Park System.

Cultural and Events

In a small-town setting, natural refuge county parks hold deep cultural significance beyond their environmental value. These protected spaces reflect the community’s shared commitment to land stewardship, agricultural conservation, and respect for local heritage. They often preserve landscapes that generations have hunted, farmed, explored, and gathered on, creating a strong sense of identity and continuity. Natural refuge parks also serve as outdoor classrooms and quiet places for reflection, strengthening connections between residents and the land while fostering appreciation for wildlife and native ecosystems. By safeguarding these areas, the county not only protects natural resources but also honors the traditions, values, and rural character that define the community.

Bright Meadows Community Park is working with volunteers to bring back the much requested and desired Bright Community Festival to the community. The Park Board is working with the volunteer group to coordinate layouts of the festival in the park setting to offer food vendors, music opportunities, including rides and games through a 3-day long weekend event. Prior to 2020 this event was held on property owned by the local Fire Department and since COVID, the festival has not been occurring. The hopes are

**Dearborn County Parks
5-Year Master Plan
2026-2030**

that through coordination with volunteers, the local business association and the Park Board, this festival can return to the community as early as 2026. It offers a paved walking trail, ball field for the local sport youth groups, shelter areas, and playground areas. Most recent there has also been added a short disc golf course that was put together with the help of citizen volunteers avid in the sport.

Guilford Covered Bridge Park is located on the banks edges of Tanners Creek which is one the of top 5 largest creeks in Dearborn County. The pride and joy of the park is the covered bridge that was built in 1879 as a Burr Arch Truss structure spanning over the east fork of Tanners Creek. The bridge was moved to its current location at the park in 1960 and is currently maintained by the Park Board. It has been used as a fund raiser event for a local organization as A Community Bridge event. The bridge is most often used as a back drop to various historic stories, short videos, and local senior pictures.

Rullman Wildlife Refuge Park offers a series of new trail systems for walkers and hikers through the vast woodland growth of the park area. This park also provides a nice catch and release fishing pond and creek walking along the south side of the park's boarder. Also providing a shelter and picnic area for the citizens to host small parties or events.

Gladys Russell Park is the most reserved park as it offers an old wooden barn facility that is perfect for small wedding events with a country feel. With the attached bathroom facility and pond views the park offers great visual pictures of any event. This is also the only park that offers areas for horseback riding for avid cowboys.

County Farm Park is the largest of all the county parks. It offers activities such as hiking and disc golf course through some beautiful woodland areas. The park also offers a shooting range for educational classes ranging from children to adults.

Dearborn County Parks 5-Year Master Plan 2026-2030

Transportation Links

Dearborn county is served by two interstates, I-74 in the north and US 50 to the east. Both provide convenient access to the Tri-State Greater Cincinnati area. U.S. Highway 50 travels the southern portion of the county and is the primary artery connecting Greendale, Lawrenceburg and Aurora.

Most of the county's residential and industrial development has occurred in this corridor. Since 1996 major improvements to U.S. 50, between the I-275 connector and Aurora has dramatically increased development and subsequently congestion. Additional major roads are U.S. 52 and State Roads 1, 46, 48, 56, 62, 262, and 350. Because of the terrain, all but the most recently built roads follow ravines or ridge tops. County roads in particular are frequently winding and steep.

County roads were historically paved with crushed stone and became a significant source of complaints to County elected officials. As riverboat gaming money became available the County has re-paved almost all county roads with asphalt. The tremendous growth in the northern part of the county in particular has burdened country roads built for a rural infrastructure. These roads are now accommodating a growing suburban population. Several problem sections of County roads have been straightened and bridges replaced.

A long-time factor in Dearborn County's transportation history and economy, the Ohio River is one of the chief transportation arteries in the U.S. Improvements to enhance its transportation capacity were begun by the Army Corps of Engineers in 1824. While Dearborn County does not directly benefit from the river's freight traffic, the series of locks, dams and flood control devices installed by the Corps do enhance the river recreation potential. The Markland Dam 41 miles downstream from Lawrenceburg near Warsaw, Kentucky, forms a lake extending 96 miles upstream. Installation of this dam created a significant recreation industry in Dearborn County.

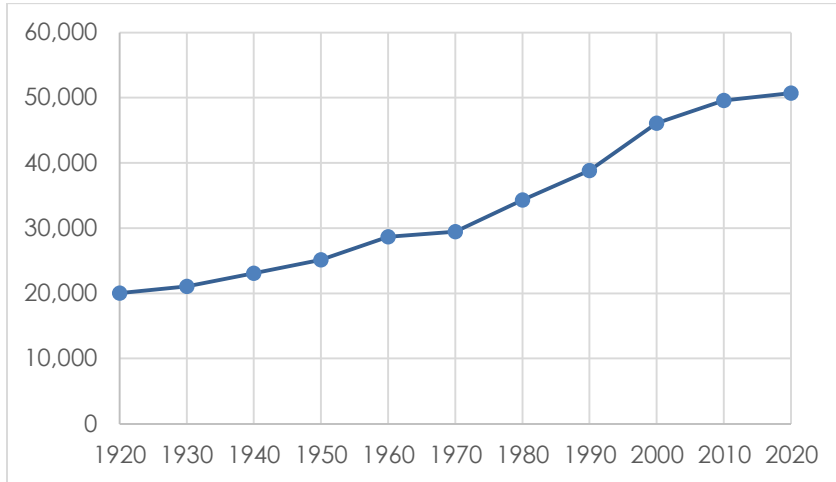
All parks are accessed through County maintained roadways, being within minutes of State Highways offering easy access to the parks. All County maintained roads feeding into the location of the five parks are considered in good condition without much need of upgrades. Three out of the five parks are located off road considered to be collectors and are maintained on a regular basis.

Dearborn County Parks 5-Year Master Plan 2026-2030

Dearborn County Demographics and Social Economic Factors

The County's population has grown steadily over the last 100 years. From 1990 to 2020, the population grew from almost 39,000 people to 50,679 with an estimated population in 2024 of 51,435 people in Dearborn County.

Dearborn County Historical Population Growth



County Census Counts: STATS Indiana

As population increases, proactive park planning becomes essential to ensure that recreational spaces continue to meet the needs of the community. Thoughtful long-term planning allows the Park Board to anticipate demands for trails, green space, and facilities while preserving land before development pressures limit available options. Expanding and improving parks helps maintain quality of life, supports public health, and provides equitable access to outdoor recreation for residents of all ages. Future-focused planning also ensures that growth does not come at the expense of natural resources, allowing Dearborn County to balance development with conservation and create resilient park systems that serve both current and future generations.

County Park—Township Location	
County Farm Park	Manchester
Gladys Russell Park	Manchester
Rullman Park	Manchester
Guilford Covered Bridge Park	Miller
Bright Meadows Community Park	Harrison

Manchester Township is the largest land base within Dearborn County comprising of 29,107 acres. This is one of the reasons three of the county's largest parks by acreage are located within Manchester Township. The Township still contains many large parcels of land that have remained in family ownerships for generations, and land

Dearborn County Parks 5-Year Master Plan 2026-2030

subdivision into smaller lots has been limited. Despite its size, Manchester Township ranks 5th in population within the County. From a park-planning perspective, this indicates that future park development should consider additional locations beyond Manchester Township.

The six most populated townships in Dearborn County are Lawrenceburg, Miller, Center, Logan, Manchester and Harrison. When evaluating park access based on population growth, Lawrenceburg Township benefits from proximity to multiple parks within the Cities of Lawrenceburg and Greendale. Miller Township contains a county park, while Center Township has convenient access to several parks within the City of Aurora. Logan Township does not currently have a County Park; however, a non-profit organization that has recently secured a former school property to establish a community park. Manchester Township is already served by three county parks and Harrison Township is served by Bright Meadows Park.

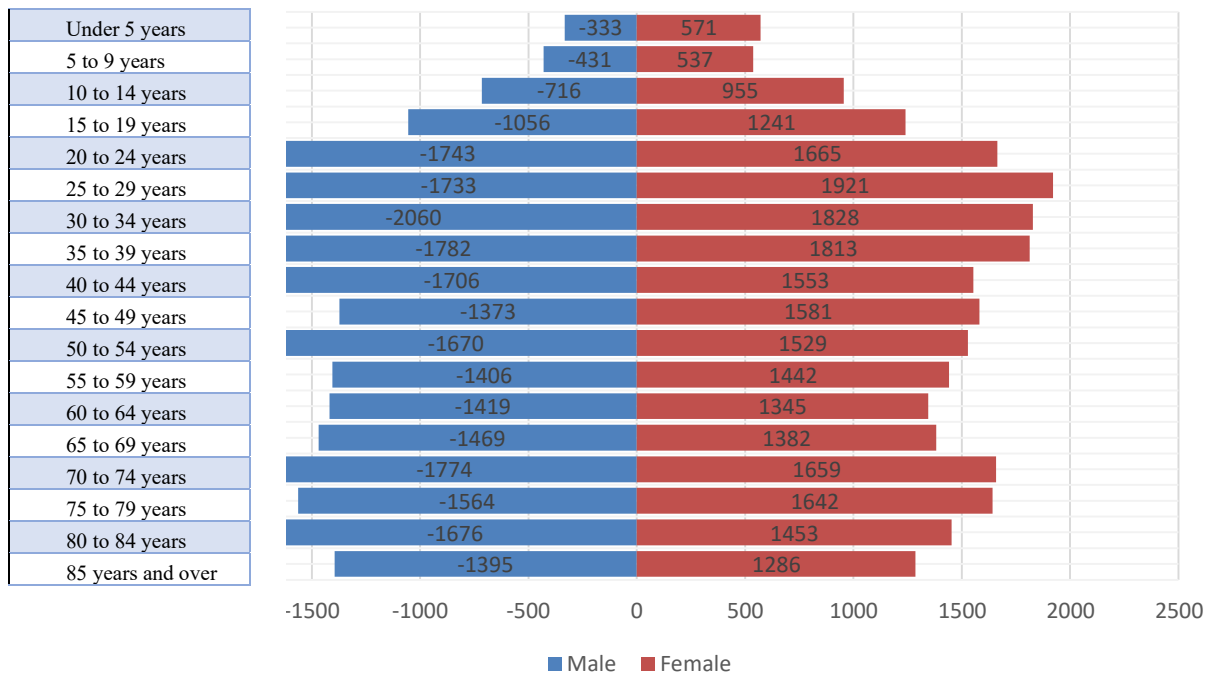
Looking ahead, if future park growth is evaluated solely on population, the current distribution of parks serves a significant portion of the county's residents. However, when township location and travel accessibility are considered, the northwest and southwest portions of Dearborn County are comparatively underserved. Addressing these gaps should be a priority in future park planning to ensure equitable access for all residents.

County Township Population Trends

	1980	1990	2000	2010	2020
Caesar Creek	275	310	286	238	212
Center	5,157	5,182	5,431	5,318	5,013
Clay	2,422	2,813	3,051	2,966	2,819
Harrison	1,801	2,421	3,108	3,204	3,159
Hogan	932	936	1,138	1,178	1,074
Jackson	1,124	1,184	1,419	1,705	1,676
Kelso	1,706	1,819	1,912	2,341	2,283
Lawrenceburg	9,647	9,923	10,434	10,985	10,816
Logan	1,657	2,129	2,513	3,541	3,504
Manchester	2,342	2,571	2,930	3,215	3,212
Miller	2,903	4,761	8,605	9,810	9,621
Sparta	2,314	2,531	2,809	2,894	2,839
Washington	1,210	1,387	1,488	1,431	1,302
York	779	868	985	1,221	1,129
County Total	34,296	38,835	46,109	50,047	50,679
County Census Counts: STATS Indiana					

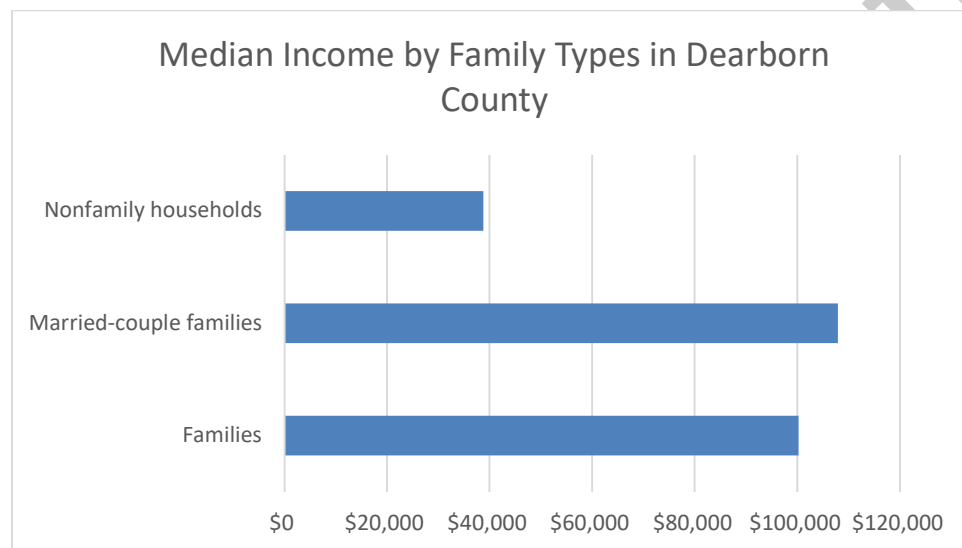
Dearborn County Parks 5-Year Master Plan 2026-2030

County Population by Gender



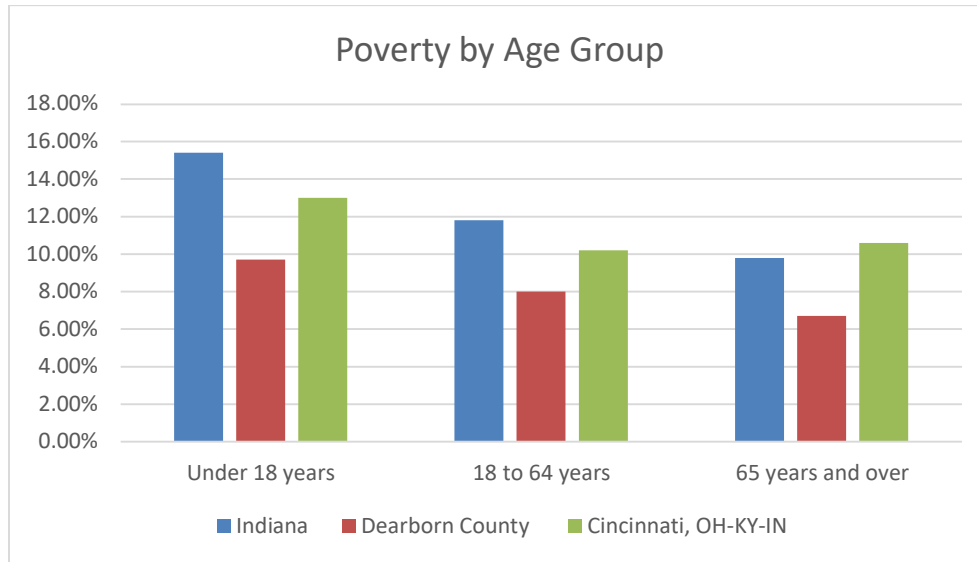
2023: ACS 5-year Estimates Subject Table; US Census Bureau

The median age for Dearborn County is 42 years old and has been increasing since 2020 when the median age was 35 years old. The increase in median age of population supports an increasing need for senior oriented programs, amenities and services as well as family oriented and outdoor social spaces.



2023: ACS 1-year and 5-year Estimates S1901 Subject Table; US Census Bureau

Dearborn County Parks 5-Year Master Plan 2026-2030



Income and Poverty by Township

	Median Household Income	Percentage of Residents Below Poverty Level
Caesar Creek	-	4.60%
Center	\$55,658	17.60%
Clay	\$58,325	15.50%
Harrison	\$67,386	2.50%
Hogan	\$83,285	9.10%
Jackson	\$103,542	3.10%
Kelso	\$103,478	5.10%
Lawrenceburg	\$67,458	9.20%
Logan	\$116,292	5.00%
Manchester	\$81,738	13.20%
Miller	\$104,261	3.60%
Sparta	\$62,578	10.40%
Washington	\$104,167	2.70%
York	\$117,143	5.50%
County as Whole	\$82,693	8.10%

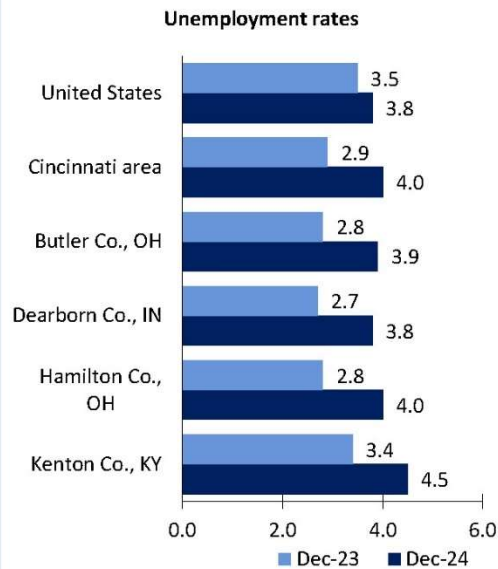
2023: ACS 5- Year Estimates Subject Tables S1901, S1701

Taking park planning a step further, the southwest region of the county can also be evaluated through the lens of poverty level, particularly in Clay and Sparta Townships. Considering these two townships for future park locations would help improve access to parks and recreational facilities for lower income families by reducing travel distance

Dearborn County Parks 5-Year Master Plan 2026-2030

and related barriers. Strategically locating parks in these areas can promote equity, support public health, and ensure that all residents—regardless of income—have opportunities for outdoor recreation, community gathering, and connection to nature.

Unemployment rates for the nation and selected areas



Source: U.S. BLS, Local Area Unemployment Statistics.

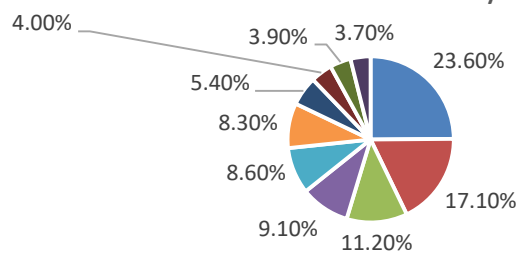
Average weekly wages for all industries by county

Cincinnati area, second quarter 2024
(U.S. = \$1,390; Area = \$1,285)



Source: U.S. BLS, Quarterly Census of Employment and Wages.

Dearborn County



- Educational services, and health care and social assistance
- Manufacturing
- Retail trade
- Professional, scientific, and management, and administrative and waste management services
- Construction
- Arts, entertainment, and recreation, and accommodation and food services
- Transportation and warehousing, and utilities
- Finance and insurance, and real estate and rental and leasing
- Other services, except public administration
- Public administration

Dearborn County Parks—Accessibility and Design Standards

Statement of Accessibility

At this time, the Dearborn County Parks Master Plan does not include a formal statement of accessibility. However, the Park Board recognizes the importance of equitable access to parks, programs, and facilities for all community members. Improving accessibility will be a key priority over the next five years, with a focus on identifying barriers, incorporating inclusive design principles, and aligning future park improvements with accessibility best practices and applicable standards. The Park Board is committed to ensuring that accessibility considerations are integrated into planning, development, and ongoing operations as the Master Plan is implemented.

Current and Proposed Accessibility

Although there is no formal accessibility plan in place at this time, the Park Board has made meaningful strides to improve accessibility throughout the parks system. Efforts to reduce physical and programmatic barriers have been incorporated into park design, facility upgrades, and maintenance practices, with an emphasis on creating inclusive spaces for users of all abilities. These ongoing improvements reflect the Park Board's commitment to accessibility and provide a strong foundation for advancing more comprehensive and intentional accessibility initiatives in the years ahead.

Bright Meadows Community Park has seen improvements aimed at enhancing accessibility throughout the site. While the park is not currently fully compliant, it does include an existing 4-foot-wide paved walking path around the outer limits of the park. Funding has been set aside to widen this path to 8 feet and to reroute select segments to higher ground in order to meet slope requirements. These improvements will create a continuous, fully accessible looped pathway. Construction of the upgraded pathway is planned through the Stellar Pathways program, for which Dearborn County has been designated, with a projected timeline of 2028. The plan also includes paved connections to all park amenities, including a proposed inclusive playground and a paved fitness area, as well as new parking areas designed to provide accessible connections to the walking path.

Guilford Covered Bridge Park is situated on land that lies lower than the adjacent roadways; however, the covered bridge is constructed to accommodate vehicular traffic and provides access to the lower parking area. A paved pathway currently connects the parking area to the shelter on site. The Park Board has discussed plans to expand the paved pathway network to include connections to the playground area and restroom facilities, which would further improve accessibility and help ensure more inclusive access to the park's amenities.

Rullman Park currently offers limited amenities, including a parking area, a shelter, and seasonal restroom facilities. Over the past ten years, the Park Board has made

**Dearborn County Parks
5-Year Master Plan
2026-2030**

improvements by paving key areas of the park to enhance accessibility. Future plans for the park include the development of a playground with paved walking paths providing access to the area, as well as paved pathways around the pond to improve accessibility and allow visitors to enjoy the pond area more fully.

Gladys Russell Park offers amenities focused on nature trails and a wood barn structure that is frequently used for events. Over the past three years, improvements have been made to enhance accessibility to the park's highest-use amenity, the wood barn. These improvements include paving the smaller parking area and creating paved access points to the facility. Additional parking has been added to accommodate increased event attendance; however, these areas remain unpaved. This plan includes developing funding to pave the additional parking areas to further improve accessibility. Two other gravel parking areas serving trailheads for natural walking trails are also targeted for paving within the next five years. During public comment, future planning concepts discussed included the development of a small paved loop trail through the preserved nature area to provide improved access into the wooded portions of the park.

County Farm Park is the largest park in the system, with amenities located across multiple areas of the site. A shooting range was added to support educational opportunities and 4-H programs; however, accessibility to the facility and range area is currently limited by gravel areas. Future goals include paving the parking area and installing paved walkways to the range to increase accessibility and encourage broader use. On another portion of the park, amenities include a parking area, seasonal restroom facilities, and a disc golf course. Planned improvements for this area include paving the parking area and providing paved walking paths to the restrooms and the disc golf course head to improve overall accessibility.

Final Draft

**Dearborn County Parks
5-Year Master Plan
2026-2030**

Public Participation

Public Meetings/Workshops

Dearborn County conducted a series of public engagement efforts to gather input from residents on desired improvements, needed upgrades, future amenities, and existing issues or concerns within the park system. Four public workshops were held at different park locations throughout the county to encourage broad participation. In addition, the Park Board participated in the Bright Parade with a float and distributed information about the Parks Master Plan, including workshop invitations and survey locations. The Park Board also hosted a public meeting at the Dearborn County Government Center to solicit additional public comments on the Master Plan. The Park Board also had a spot on the local radio station to announce the workshops and the locations. In total, five public events were held to collect community input and ensure that public feedback informed the planning process.

As pictured on page 28, workshop invitations were widely distributed through multiple outreach methods. Invitations were handed out during the parade, displayed at the Dearborn County Government Center in the weeks leading up to the workshops, and distributed to local businesses by Park Board members. The information was also posted on the Parks Department website. The intent of this outreach was not only to provide the dates and details of the workshops, but also to remind residents of the locations of all parks within the county. In addition, the invitations were distributed through an established email list maintained by the Dearborn County Planning and Zoning Department, which has been developed over the years to help inform citizens of upcoming meetings and workshops.

During the summer months of 2025, a public survey was developed to gather additional input from residents. The survey was distributed in multiple formats to accommodate varying needs and capabilities, including paper copies handed out at workshops and public meetings, as well as a digital version posted on the Parks Department website that allowed responses to be automatically submitted upon completion. Since the introduction of the survey, a total of 113 completed responses were received. While this number may appear modest, it exceeded the Park Board's expectations and provided valuable insight to help guide the Parks Master Plan. A blank version of the survey can be viewed in the Appendix of this plan.

Dearborn County Parks 5-Year Master Plan 2026-2030

2026-2031 Dearborn County Park Master Plan

Please take some time to attend a public workshop to provide feedback in regard to future goals, objectives and projects that are being considered by the Park Board for all 5 of the County Parks.

- July 26, 2025 from 10:00am to 1:00pm
Parade and Workshop
Bright Meadows Community Park
- August 7, 2025 from 6:00pm to 8:00pm
Guilford Covered Bridge Park
- August 23, 2025 from 9:00am to Noon
Bright Meadows Community Park
- Sept. 11, 2025 from 6:00pm to 8:00pm
Gladys Russell Wildlife Preserve

Dearborn County Park Board



**YOU'RE
INVITED**

**WE WANT TO
HEAR FROM YOU**

DISCOVER DEARBORN COUNTY PARKS

Rullman Wildlife Refuge
19322 Turkey Point Road
Guilford, IN 47022

80 acres—wildlife, trees and fauna shelter and picnic area, walking trail and catch and release fishing

Gladys Russell Wildlife Refuge
13364 White Plains Road
Milan, IN 47031

149 acres—hiking, picnicking, horse-back riding, catch and release fishing, rent a restored wooden barn

Bright Meadows Community Park
2095 Einsel Road
Lawrenceburg, IN 47025

18 acres—baseball fields, multi-purpose field, basketball courts, playground equipment, disc golf course, and shelters

County Farm Park
11706 County Farm Road
Aurora, IN 47001

307 acre—catch and release fishing, disc golf course, hiking trails, picnic areas, and a 4-H shooting sports range

Guilford Covered Bridge Park
4785 Main Street
Guilford, IN 47022

3.54 acre—restored Guilford Covered Bridge, picnic shelter, basketball courts, playground and beautiful views of Tanners Creek

Dearborn County Parks 5-Year Master Plan 2026-2030

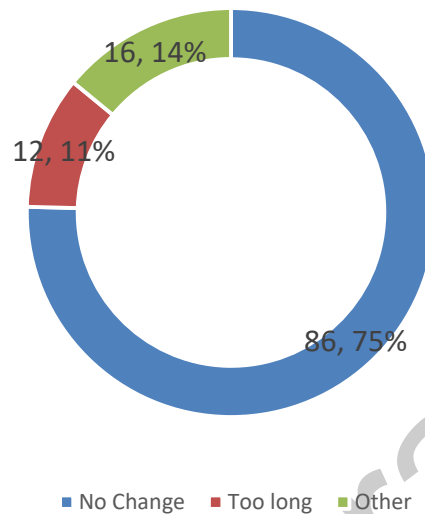
Survey Results

Dearborn County Parks Vision Statement

To provide and improve the physical, cultural and economic environment of Dearborn County by providing the maximum enjoyment and satisfaction to the residents and visitors through natural and man-made features in the landscape of designated park areas. With breathtaking hilltops, landscapes, and rivers as natural assets, we will invest in amenities, extensive trails, and park enhancements to support these assets, positioning our region as a premier destination for outdoor enthusiasts and a retreat to simpler living.

Question 1. Respondents were asked what they should change about the vision statement:

Figure 1. Vision Statement Changes

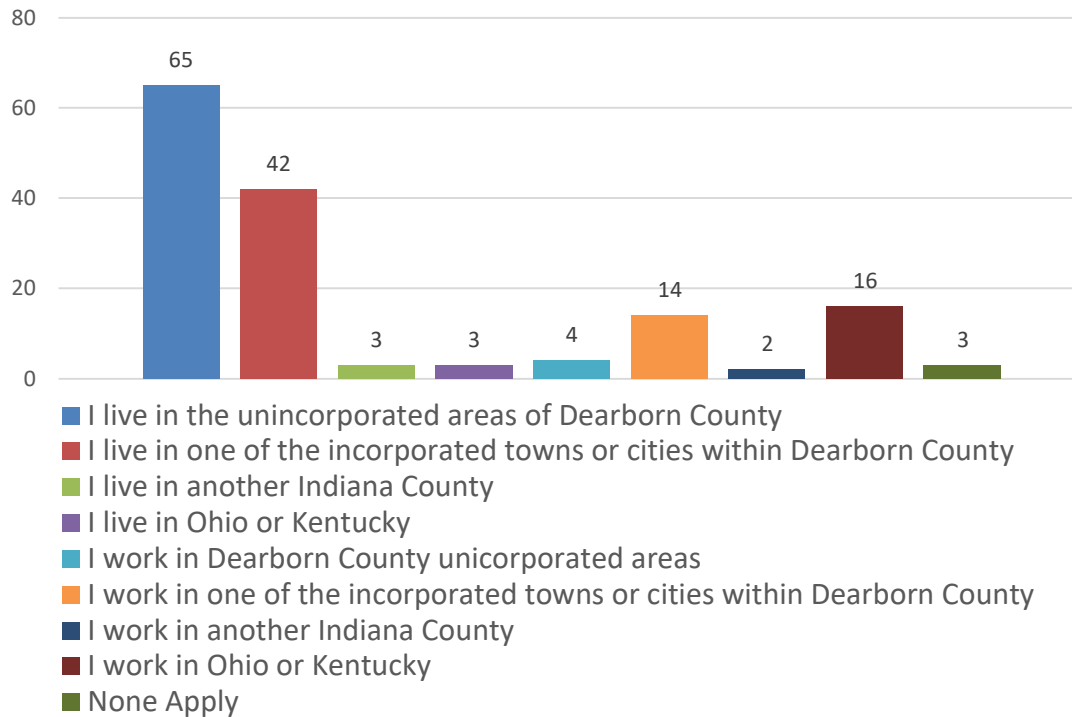


The figure above (**Figure 1**) shows the percentage and total responses to changes in the Dearborn County Parks Vision Statement. Majority of residents felt no need to change the vision statement, and a small portion of respondents believed it was too long. The category of other was respondents who wrote other comments is provided in the appendix with all full responses. This provided a great start to the Master Plan and the goals summarized in a vision statement.

Respondents were asked their relationship to Dearborn County. **Figure 2** shows the distribution of respondent's relationship to Dearborn County. Majority of respondents lived in Unincorporated Dearborn County, with the second largest demographic belonging to the incorporated cities and town. A small portion of respondents lived out of state in Ohio or Kentucky.

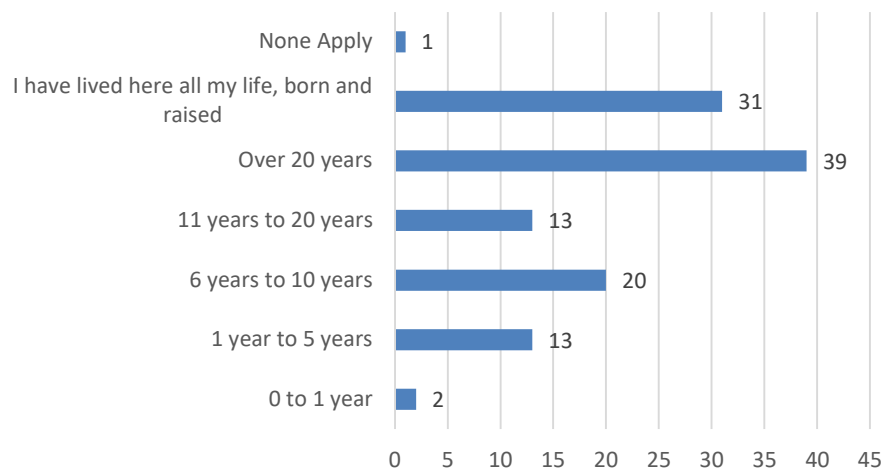
Dearborn County Parks 5-Year Master Plan 2026-2030

Figure 2. Relationship to Dearborn County



Question 3. Respondents were asked how long they have resided in Dearborn County. **Figure 3** shows the distribution of respondent's duration living in Dearborn County. Majority of respondents have lived in Dearborn County over 20 years. The second largest category were those who have lived here all their lives. Respondents were able to select multiple durations, so some individuals selected over twenty years and all their lives. There were few respondents who only recently moved to Dearborn County with only 15 respondents moving to the County within the last 5 years.

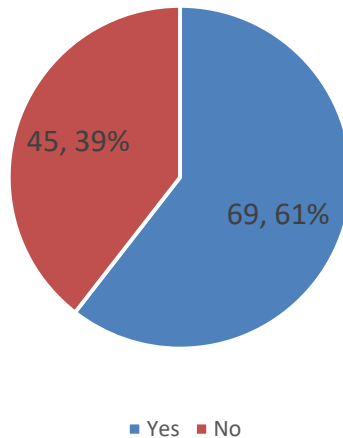
Figure 3. Duration in Dearborn County



**Dearborn County Parks
5-Year Master Plan
2026-2030**

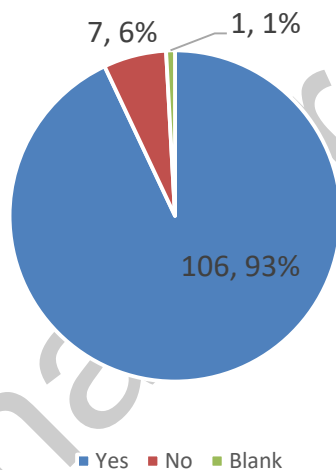
Question 4. Asked respondents if they were aware Dearborn County has 5 parks? **Figure 4** shows that majority of respondents were aware Dearborn County has 5 parks. However, a significant percentage of respondents, 39%, were not aware of all the County Parks. The large portion of respondents who were unaware of the parks suggest a lack of community communication and connection.

Figure 4. Dearborn County Parks Known



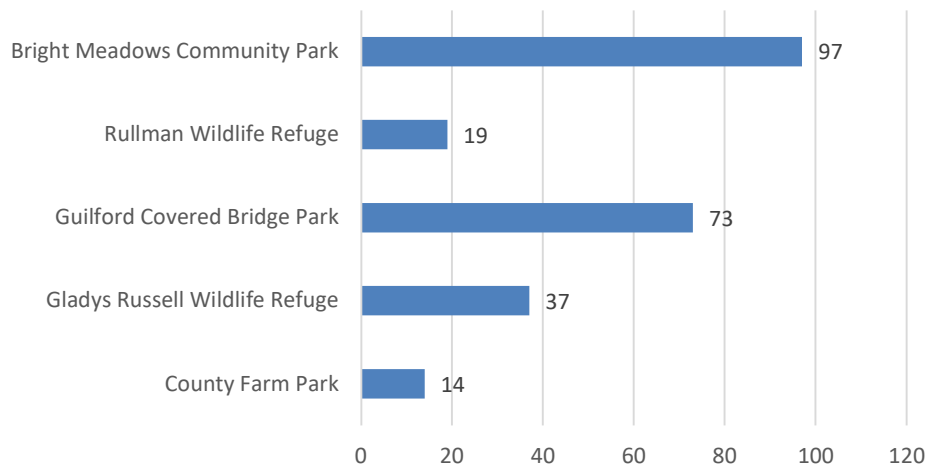
Question 5. Asked respondents if they or anyone in their household had visited a County Park in the last 5 years, and if so, which parks they had visited. **Figure 5** shows majority of respondents had visited at least one of the County maintained parks in the last five years. **Figure 6** shows which of the parks were visited in the last 5 years. The top two visited parks were by far Bright Meadows and Guilford Covered Bridge.

Figure 5. Parks Visited in Last 5 Years



**Dearborn County Parks
5-Year Master Plan
2026-2030**

Figure 6. Parks Visited in Last 5 Years



Individuals who did not visit a County Park in the last 5 years were asked why not? Those comments have been outlined in the Appendix.

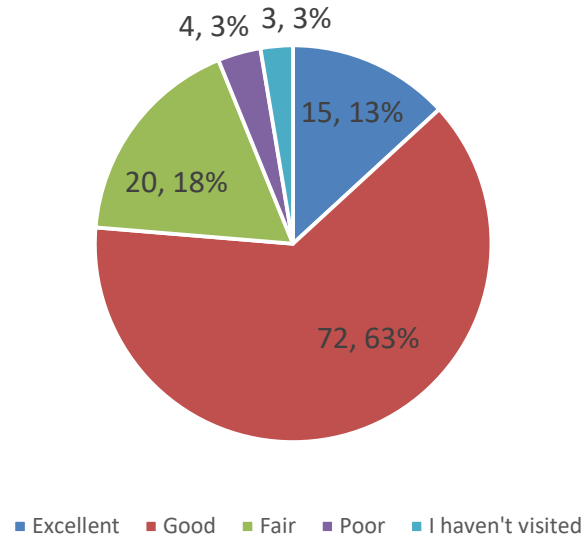
Question 6. Asked respondents to rank the Dearborn County Parks from their best to least favorite, with 1 being the best. **Figure 7** is a chart of the ranks given to each park at each level. It should be noted respondents were able to give categories the same score, so in some surveys all parks were given 5s or multiple parks were given 1s. The average score of each park was calculated and highlighted in blue below. The favorite parks of respondents were as follows from most favorite to least favorite: Bright Meadows Community Park, Guilford Covered Bridge Park, Gladys Russell Wildlife Refuge, Rullman Wildlife Refuge, and County Farm Park.

Figure 7. Parks Ranked	1	2	3	4	5
County Farm Park	6	12	30	14	39
Gladys Russell Wildlife Refuge	15	19	26	36	10
Guilford Covered Bridge Park	19	45	21	16	8
Rullman Wildlife Refuge	10	15	21	29	30
Bright Meadows Community Park	70	19	3	2	17

Dearborn County Parks 5-Year Master Plan 2026-2030

Question 7. Asked respondents to rank the condition of Dearborn County Parks. Majority of the respondents stated the County Parks are in good condition.

Figure 8. Park Conditions



Question 8. Asked respondents to check the reasons they do not frequent the parks as often, and if a reason was not shown to write that reason. The top two reasons given for not visiting Dearborn County Parks were: Was not aware of the parks and what each park offers or Lack of features you would like to use. Additional reasons as to why respondents did not frequent the parks as often are shown in the appendix.

Figure 9. Reasonings for not visiting Dearborn County Parks

Please check all the reasons you don't frequent the parks as often or that you don't visit them at all	Count
Use parks and trails within city limits	14
The parks are too far from your house	22
Parks and trails are not well maintained	8
Lack of features you would like to use	42
Lack of parking to access park facilities and activities	9
Do not feel parks are safe	2
Lack of handicap accessibility	3
Was not aware of the parks and what each park offers	44
Lack of restrooms	11
None of the above, nothing prevents us from frequenting the parks	39

**Dearborn County Parks
5-Year Master Plan
2026-2030**

Question 10. Asked respondents which of the park facilities they have used in the last 5 years. **Figure 11** shows the top used facility is paved walking paths, followed by playgrounds, and then shelters/picnic areas. The least used facility is horseback trails.

Figure 11. Which Park facilities have you used in the past 5 years?	Count
Hiking (natural floor trails)	59
Club Sport Activities	28
Shelters/Picnic Areas	74
Bird Watching (Wildlife)	19
Paved Walking Paths	93
Frisbee Golf	14
Pickle Ball	16
Horseback Riding	6
Facilities for Family Gatherings or Celebrations	34
Playgrounds	75
Basketball	19
Catch and Release Fishing	15

Question 11. Asked respondents if they would be willing to pay additional taxes for the parks. **Figure 12** shows their responses. Majority of respondents were open to the possibility of additional taxes, with only 20% strongly opposed.

Figure 12. How willing would you be to pay additional taxes or fees that would be collected strictly for the use to the parks to acquire, develop, improve and maintain the parks in Dearborn County?	Count
Yes	31
Maybe	60
Definitely Not	23

**Dearborn County Parks
5-Year Master Plan
2026-2030**

Question 12. Asked respondent what additional facilities or services or recreational opportunities they would like added to the parks. **Figure 13** shows the respondent support for each additional facility type. The most popular facility wanted by responded was water features/splash pad, followed by farmer's markets, and access to natural water features. There was not a huge demand for indoor rental spaces, or side by side trails.

Figure 13. What types of additional facilities or services or recreational opportunities would you like added to the parks?	Count
Dark Sky (area of less amount of light pollution for star gazing)	40
Movies in the park	44
Farmers Markets	62
Senior exercise programs	15
Music in the park (concerts/music events)	51
Nature/Environmental learning programs	41
Arts and crafts programs	30
Dog parks	19
Outdoor fitness pods/platforms	32
UTV/side by side trails	10
Access to natural water features (kayaking, boating, fishing, etc.)	60
More restrooms	36
Picnic type facilities (grills, shelters, electric power, etc.)	33
Pavilions/amphitheater	16
Community gardens	28
More indoor rental areas	8
Water features/Splash pad	80
Rental spaces (shelters, halls, camping, etc.)	35

Question 13. Asked respondents to rate their satisfaction with Dearborn County Parks, overall respondents are satisfied with the condition of the parks.

Figure 14. Are you overall satisfied with the quality of parks in Dearborn County?	Count
Very Satisfied	14
Satisfied	85
Dissatisfied	15
Very Dissatisfied	0

**Dearborn County Parks
5-Year Master Plan
2026-2030**

Question 14. Asked respondents to rate their satisfaction with Dearborn County Parks compared to ten years ago, respondents believe parks have improved compared to 10 years ago.

Figure 15. How does the quality of parks compare to 10 years ago?	Count
Much Better	25
Somewhat Better	59
About the Same	25
Somewhat Worse	4
Much Worse	1

Question 15. Asked respondents what improvements should Dearborn County Parks make, goals to achieve, or objectives or policies to include for the future of the County parks system. There were 11 comments referencing the need for improved maintenance whether that was a need for weed eating, managing ponds for algae, clearing debris from hiking trails, or better maintaining existing paved trails. There were 10 comments wanting some sort of splash pad or pool to be offered by Dearborn County Parks, this was the second most common request. The third most common improvement was for the County to acquire more land/greenspace, with 7 people commenting similar ideas. Other notable improvements with more than one individual commenting the same things are: Addressing Bright Meadows Parking (4), increase paved trails (5), improve security (2), add playgrounds (4), increase unpaved trails (4), more horse trails (3), host more events (2), improve fishing (4), and enclose Bright Playground (2). All responses have been included in the appendix of this plan.

Final Presentation

The final presentation of the Parks Master Plan is scheduled for the rescheduled Park Board meeting in February 2026. The plan, which has been submitted to the Indiana Department of Natural Resources (IDNR), will be made widely accessible to the public. It will be posted on the Parks Department website, presented at a Board of Commissioners public meeting, posted on the County's website, and distributed via email to citizens and organizations throughout Dearborn County. This final review is intended to collect any additional comments, ensure that all previously gathered information has been accurately represented, and confirm that no critical information has been omitted from the plan.

Needs Analysis

Method

The Parks Master Plan needs analysis was conducted using a combination of public surveys, community comments, and an examination of the demographics of Dearborn County. Public surveys and feedback collected during workshops, meetings, and online provided direct insight into residents' priorities, desired amenities, and concerns regarding existing facilities. Additionally, demographic data—including population distribution, age groups, and community trends—was analyzed to identify current and future park usage needs and to ensure equitable access to recreational opportunities across the county. By integrating public input with demographic trends, the Park Board was able to develop a comprehensive understanding of the community's recreational needs and establish priorities for future park improvements and investments.

General Issues from Community Input

- **Park Awareness:** Address public awareness of existing parks and locations. There was a significant number of responses that were unaware of the number of county parks and their locations. Along with lack of awareness of amenities provided.
- **Park Expansion:** Provide more parks throughout the County. Distance of existing parks to more citizens was mentioned in surveys and shown through the population growth of the townships.
- **Amenities Alignment:** Features and amenities need to be added to the parks that people want. There is a disconnect between the wants of the citizens and improvements that have been made over the years.
- **Maintenance:** Several comments were made regarding the maintenance of the parks. With a majority of the parks being natural landscape maintenance can be a struggle over the vast acreage contained in the parks. The lack of a maintenance department or staff contributes to this struggle.
- **Social Economic Benefits:** Increasing parks seem to be support by the citizens in their listing of benefits that parks provide to the community. Not only for fitness and recreational purposes but also social economic purposes.
- **Preservation:** Continue to preserve green space, woodlands, natural water features and agriculture lands. With the increase in population and growth within the County, citizens worry about the land being consumed by development.
- **Accessibility:** Accessibility of paved walking paths had a high usage supporting the need to conduct an accessibility analysis and add the improvements to the top of the list.

**Dearborn County Parks
5-Year Master Plan
2026-2030**

- **Funding:** Increase funding slated for the parks system. Funding is always an issue when creating or improving parks. Typically, there is no funding to be made by the usage so other means need to be considered. In the Survey there was a high number of responses that stated they might consider supporting an increase in taxes if it was slated to go directly to the parks system.
- **Outdoor Activities:** Increase outdoor activities for community gatherings and water recreation and agriculture. These are high priorities as they are strong characteristics of Dearborn County.

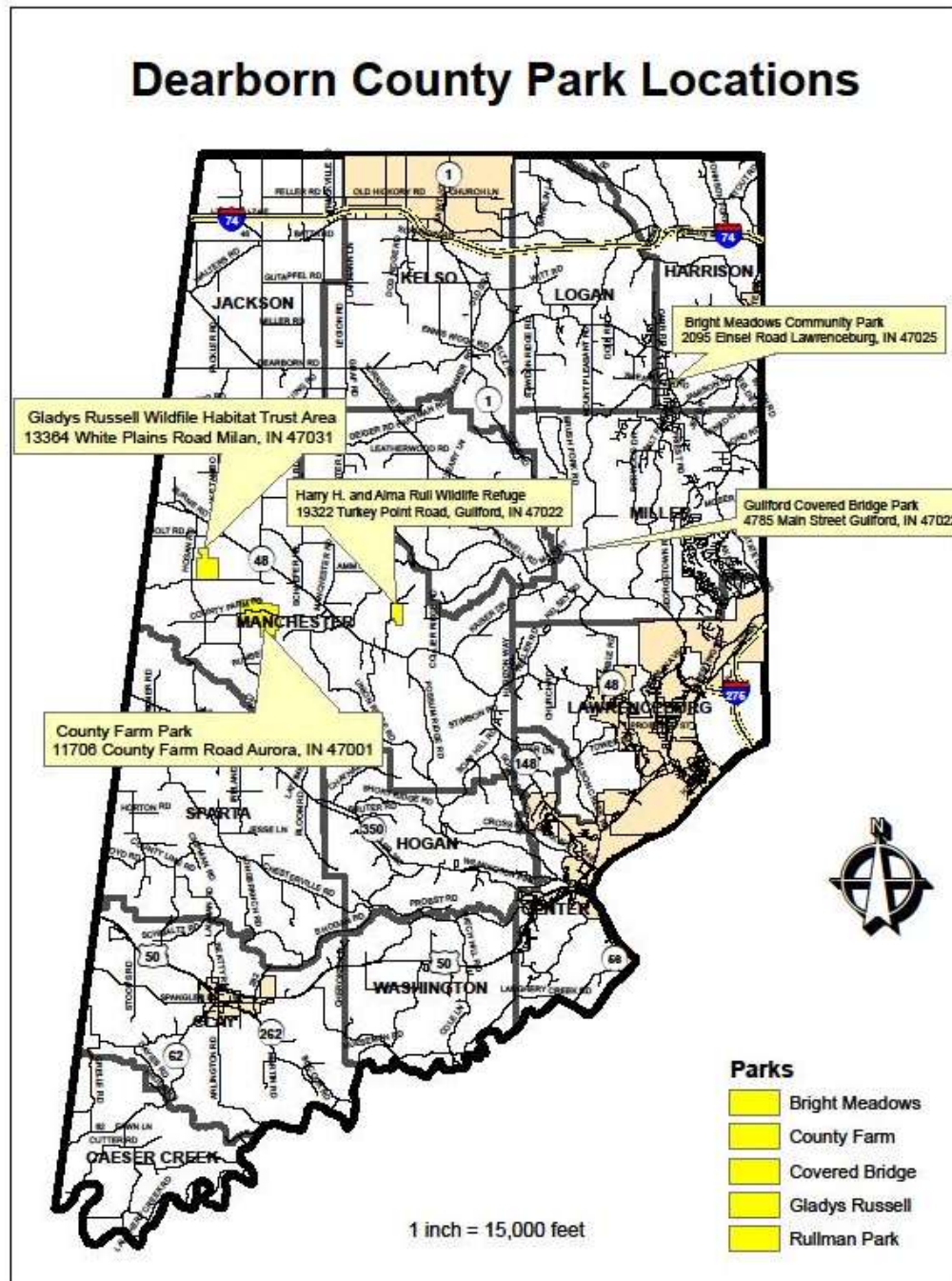
Final Draft

**Dearborn County Parks
5-Year Master Plan
2026-2030**

Facility Inventory and Programs

Currently there are five parks within the Dearborn County Park system. Providing our community with unique benefits and opportunities throughout each and every season year-round.

Existing County Park Locations



**Dearborn County Parks
5-Year Master Plan
2026-2030**

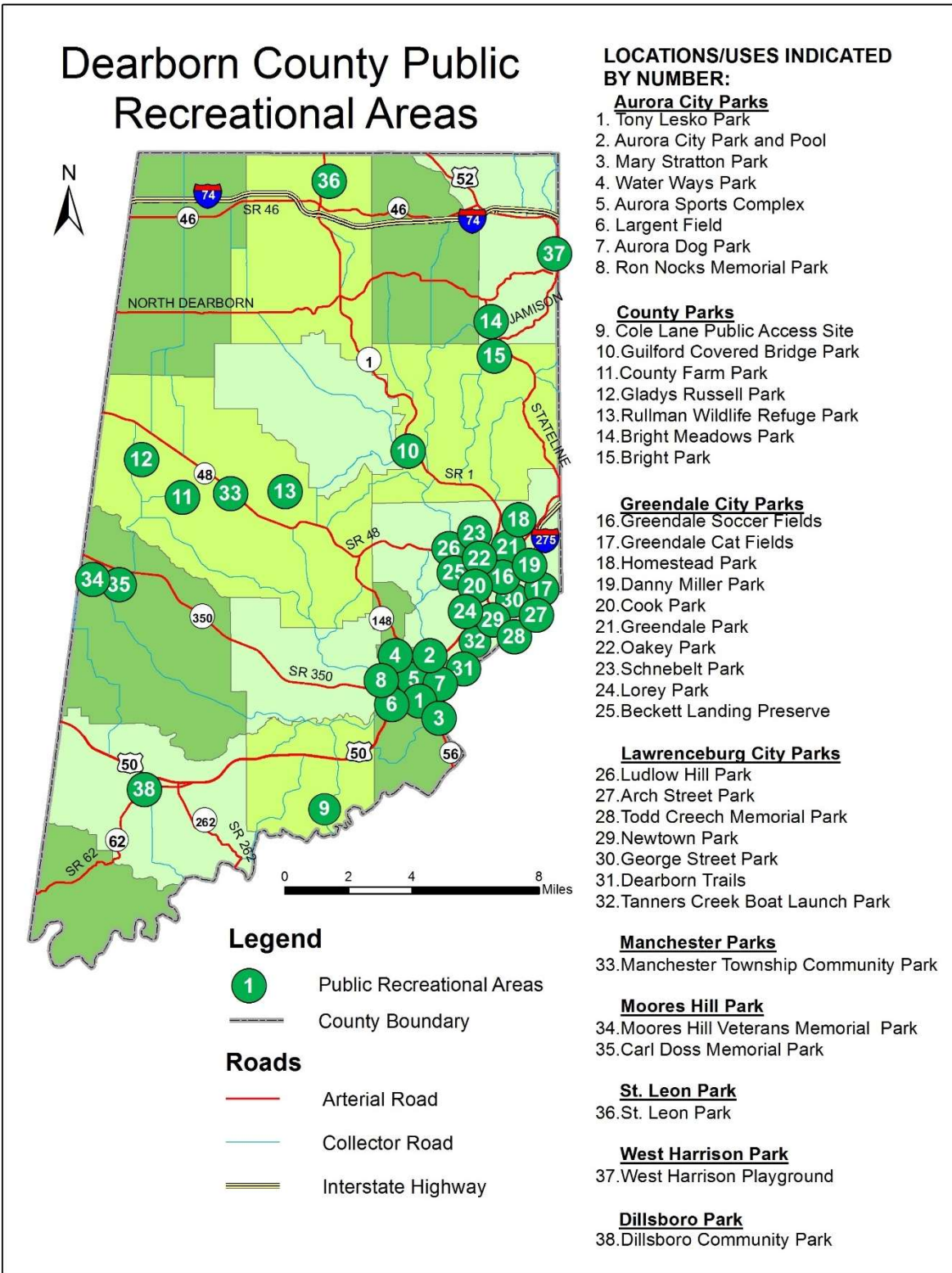
- **County Farm Park** is located in rural areas and allows visitors to experience the true natural beauty of Dearborn County. It is the largest park of the County providing two ponds, a disc golf course, and the views of native trees and fauna cover throughout that is an increasingly rare unspoiled natural area. There are also shelters provided with walking paths and picnic tables. County Farm has a shooting and archery range, which are used by many organizations for education and training.
- **Rullman Wildlife Preserve** is dedicated to native wildlife preservation. The park offers a newly forged walking trail (approximately 2 miles) through view of native trees and scenery. The park also offers a “catch and release” fishing pond along with a shelter and picnic area for all visitors.
- **Bright Meadows Park** is focused on the Bright area community with offering areas to youth and adult sports. The community park has two baseball fields, a soccer/pee-wee football field, half-court basketball facility, a paved fitness path, playgrounds, a shelter with picnic tables, restroom facilities and paved parking areas.
- **Guilford Covered Bridge Park** is the oldest park in the Dearborn County Park system for a number of unique reasons. The historic Guilford Covered Bridge is a major county historic landmark which is frequented by many roadside tourists. The park includes picnic shelters, playground equipment and basketball court while all taking in the views of the neighboring rolling of Tanners Creek. Visitors can experience a vehicle ride through the wrought iron gates and across the historic covered bridge. The area is often used for family reunions, weddings, and photo-shoots.
- **Gladys Russell Park** is a wildlife habitat trust area which is located in a rural area of Dearborn County. This park includes a barn that is rented for events such as weddings, family reunions, educational field trips and other group gatherings. The wildlife preserve offers the opportunities for bird watching and photography, and activities such as hiking, picnicking, horseback riding and fishing.

**Dearborn County Parks
5-Year Master Plan
2026-2030**

County Park	Location	Acreage	Facilities Available
County Farm	11706 County Farm Road, Aurora IN 47001	360.43	<input checked="" type="checkbox"/> Disc Golf <input checked="" type="checkbox"/> Shelters <input checked="" type="checkbox"/> Bathrooms <input checked="" type="checkbox"/> Fishing <input checked="" type="checkbox"/> Hiking Trails
Gladys Russell	13364 White Plains Road, Milan IN 47031	148.59	<input checked="" type="checkbox"/> Bathrooms <input checked="" type="checkbox"/> Shelters <input checked="" type="checkbox"/> Event Barn <input checked="" type="checkbox"/> Hiking Trails <input checked="" type="checkbox"/> Horseback Riding <input checked="" type="checkbox"/> Fishing
Bright Meadows	2201 Einsel Road, Lawrenceburg IN 47025	18.57	<input checked="" type="checkbox"/> Baseball <input checked="" type="checkbox"/> Soccer/Football <input checked="" type="checkbox"/> Paved Trail <input checked="" type="checkbox"/> Playground <input checked="" type="checkbox"/> Shelters <input checked="" type="checkbox"/> Bathrooms <input checked="" type="checkbox"/> Basketball
Guilford Covered Bridge	20634 IN-1, Lawrenceburg IN 47025	3.1	<input checked="" type="checkbox"/> Basketball <input checked="" type="checkbox"/> Playground <input checked="" type="checkbox"/> Bathrooms <input checked="" type="checkbox"/> Shelters
Rullman Wildlife Refuge	19233 Turkey Point Road, Guilford IN 47022	80	<input checked="" type="checkbox"/> Shelters <input checked="" type="checkbox"/> Bathrooms <input checked="" type="checkbox"/> Hiking <input checked="" type="checkbox"/> Fishing

Dearborn County Parks 5-Year Master Plan 2026-2030

Dearborn County Public Recreational Areas



Priorities, Action and Recommendations

Overall Park System

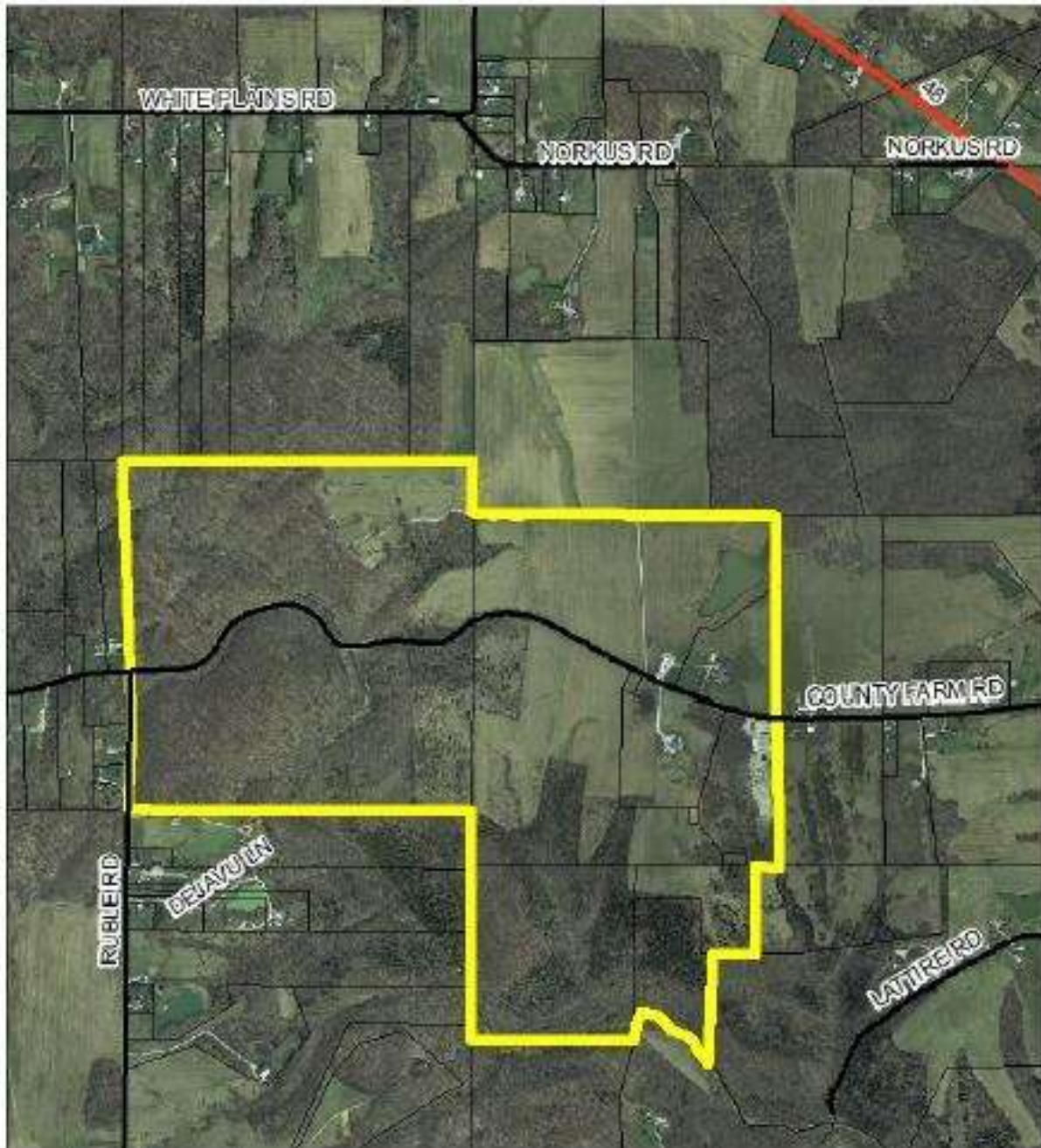
Immediate attention to increasing public awareness of County parks and their locations should be a priority within the first year of this plan. A multi-faceted approach can be implemented to reach a broad audience. Participation in County public meetings, which are well attended, will provide regular updates on park improvements, upcoming programs, and future planning, helping to engage residents who already attend these events. Publishing a bi-monthly column in the local free newspaper can further extend outreach to citizens who may not regularly attend meetings. The Park's website should be actively utilized to advertise park improvements, program schedules, events, and volunteer opportunities, ensuring timely and easily accessible information. Additional low-cost strategies could include leveraging social media platforms to engage residents, posting informational signage at park entrances, creating monthly or quarterly e-newsletters, and collaborating with local schools, libraries, and community organizations to promote parks and programs. These efforts require minimal funding but can significantly increase recognition and use of the parks, which is essential as the primary audience for the park system is the community itself.

The Park Board should establish a formal system for the community to submit complaints and concerns regarding the parks. By providing a clear and accessible process for residents to report issues—whether related to maintenance, preservation, amenities, or other aspects of the park system—the Board can systematically track and document areas needing attention. This record-keeping will create valuable data to identify trends, prioritize improvements, and measure the effectiveness of corrective actions over time. Additionally, offering this avenue for feedback demonstrates the Board's commitment to transparency, accountability, and responsiveness to community needs, helping to strengthen public trust and engagement with the parks system.

**Dearborn County Parks
5-Year Master Plan
2026-2030**

County Farm Park

This park covers 307.57 acres and was originally the Dearborn County Asylum for the Poor. Approximately 40 acres of the property is currently leased for farming and additional acreage is in the USDA CRP program.



**Dearborn County Parks
5-Year Master Plan
2026-2030**



Final

**Dearborn County Parks
5-Year Master Plan
2026-2030**



Dearborn County Parks
5-Year Master Plan
2026-2030



Dearborn County Parks 5-Year Master Plan 2026-2030



County Farm Park Priorities and Future Projects

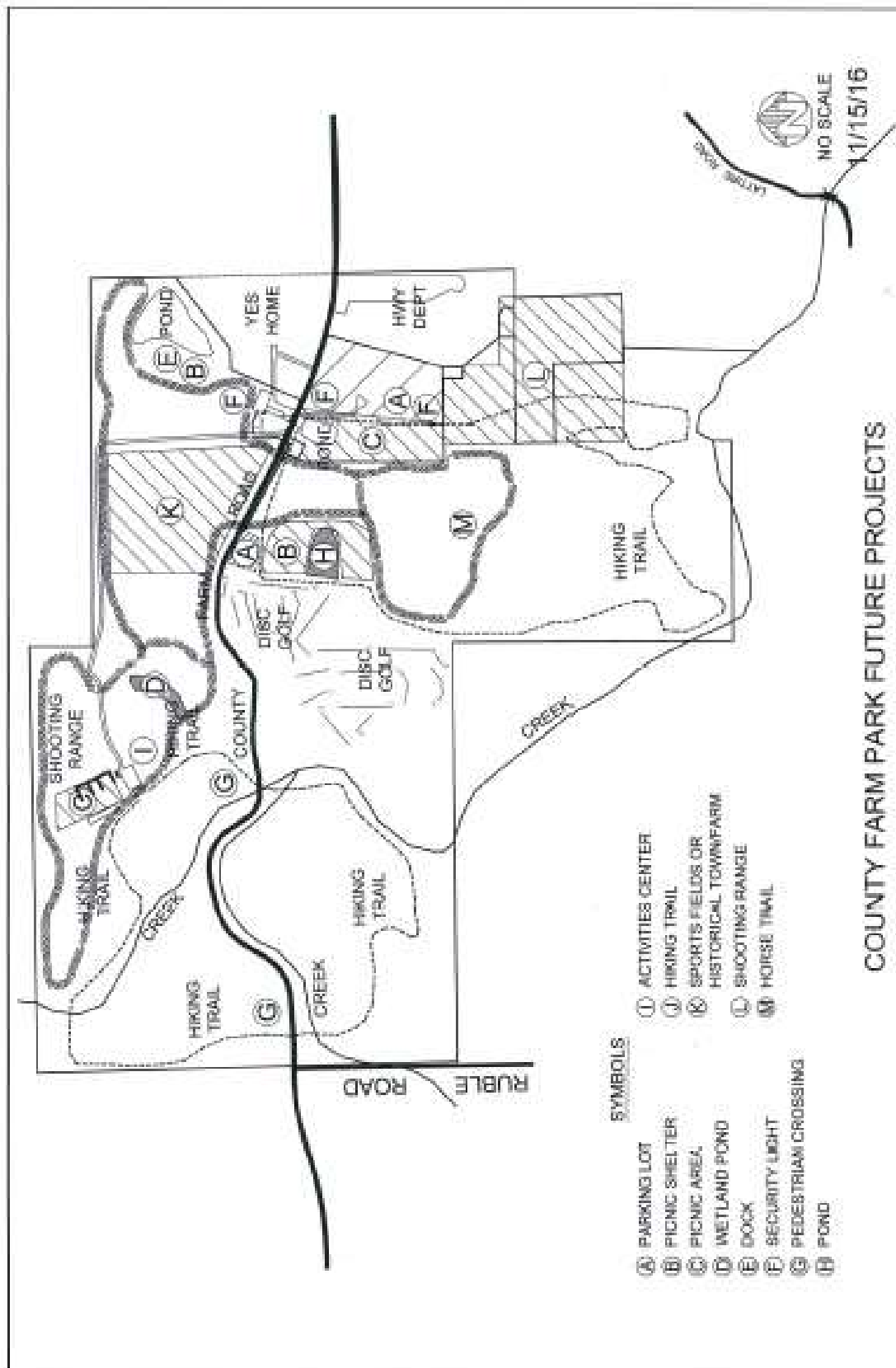
- Update and Upgrade Parking Surface for Accessibility and security
 - Integration and inclusion should be the goal of this park, with the variety of activities included at County Farm, providing accessibility to the activities is a priority. Inclusion aims to meet the needs of all uses.
 - Add safety signage and pedestrian crosswalks through trail areas of the park that cross the public roadway that runs through the park.
 - Provide security features throughout the park
 - Improve signage throughout the park
 - Add shelters by the ponds on the property to provide areas for citizens to enjoy the ponds.
 - Add additional parking areas near the ponds for accessibility to the ponds
 - Add paved access to the ponds
 - Provide paved walkways to the restroom facilities and trail and frisbee golf heads
- Increase fitness opportunities for citizens
 - Provide a fitness trail with small fitness platforms throughout the trail system.
 - Expand hiking trails
 - Provide sport fields for the youth
 - Provide mountain bike trails through the park
- Increase utilities for activities
 - Expand the water supply throughout the park for people and animals.
 - Provide additional restrooms throughout the park and winterize the restrooms to be used year round
- Provide amenities for the shooting range
 - Provide picnic tables with a shelter throughout the areas of the shooting range.

**Dearborn County Parks
5-Year Master Plan
2026-2030**

- Provide electric through solar power to the existing and proposed shelters along with the shooting range areas.
 - Partner with local businesses to sponsor events at the shooting range.
- Provide additional recreational activities and Environmental Contributing areas
 - Horseback riding trails
 - Add a number of wetland ponds and natural, native pollinator garden beds throughout the park.
- Other Activities for citizens
 - Add areas for community gardens
 - Add education signage throughout the park for birdwatchers
 - Partner with Dearborn County Convention & Visitor's Bureau to promote all activities at the park
 - Begin the process of the park becoming Dark Sky Certified for citizens to enjoy the natural beauty and visibility of stars and the Milky Way

The timeframe for implementing projects and priorities at County Farm Park is largely dependent on available funding. The highest priority should be enhancing accessibility and overall usability of the park, ensuring that all residents can safely and comfortably access the facilities. Secondary priorities should focus on the addition of new amenities, as these can be planned and constructed with accessibility integrated from the outset. By incorporating accessibility into both current improvements and any future amenities, the Park Board can maintain a consistent focus on inclusivity while simultaneously expanding the park's offerings, ensuring that accessibility remains a central consideration in all park development projects.

Dearborn County Parks 5-Year Master Plan 2026-2030



Dearborn County Parks
5-Year Master Plan
2026-2030

Rullman Wildlife Preserve

This 80-acre park is designated as a wildlife refuge and has a number of activity areas.



**Dearborn County Parks
5-Year Master Plan
2026-2030**



**Dearborn County Parks
5-Year Master Plan
2026-2030**



**Dearborn County Parks
5-Year Master Plan
2026-2030**

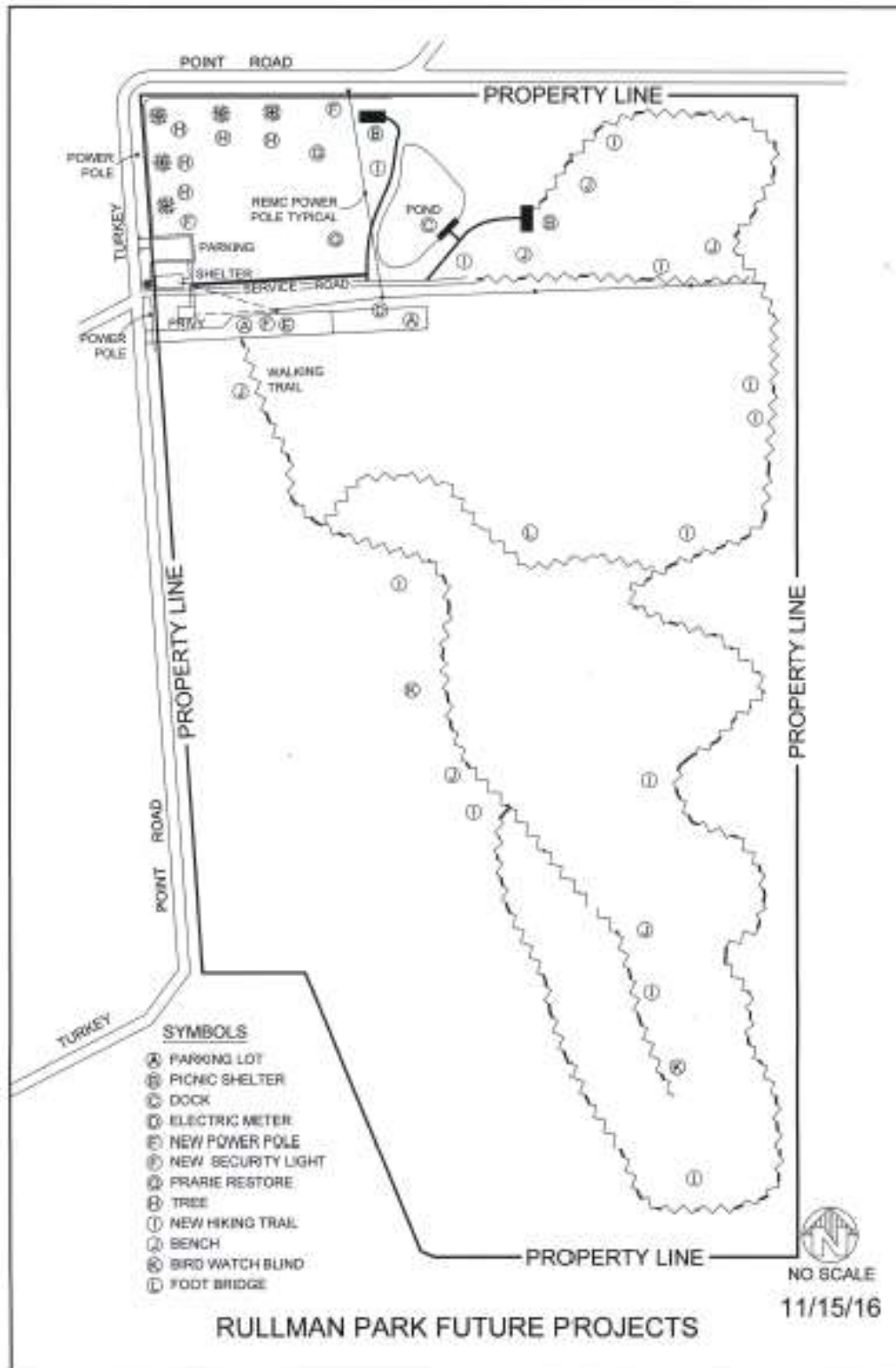
Rullman Wildlife Preserve Future Projects

- Update and Upgrade Accessibility and Security
 - Integration and inclusion should be the goal of this park, with the variety of activities included at Rullman, providing accessibility to the activities is a priority. Inclusion aims to meet the needs of all uses.
 - Provide security features throughout the park
 - Provide bridges over natural features along the walking trails
 - Improve signage throughout the park
 - Add additional parking near the pond to provide better access
 - Add paved walk way to the pond to provide better access
- Increase Outdoor Skills and Kids Education
 - Provide a fitness trail with small fitness platforms throughout the trail system.
 - Expand hiking trails
 - Provide playground equipment
 - Provide mountain bike trails
 - Provide a play ground
- Increase utilities for activities
 - Expand the water supply throughout the park for people and animals.
 - Provide a restroom for the park
- Provide amenities for the gathering spots throughout the park
 - Provide picnic tables with a shelter throughout the park
 - Provide electric through solar power to the existing and proposed shelters
 - Provide a dock at the pond
 - Provide a shelter at the pond
- Provide additional recreational activities and Environmental Contributing areas
 - Horseback riding trails
 - Add a number of wetland ponds and natural, native pollinator garden beds throughout the park.
- Other Activities for citizens
 - Add areas for community gardens
 - Add education signage throughout the park for birdwatchers

Rullman Park has been designed primarily for preservation and natural recreational activities, emphasizing the protection of its natural landscapes. The highest priority for this park, and the focus of the greatest allocation of funding, should be improving accessibility to ensure that all visitors can safely and comfortably enjoy the park's amenities. Additional improvements and enhancements can be planned and implemented on an annual basis, as these projects are expected to have minimal costs and can be designed to work in harmony with the park's natural environment,

Dearborn County Parks 5-Year Master Plan 2026-2030

maintaining its focus on preservation while gradually expanding usability and enjoyment for the community.



**Dearborn County Parks
5-Year Master Plan
2026-2030**

Bright Meadows Park

This park covers 18.614 acres and has a large number of activity areas. The park has two little league baseball diamonds, one multi-purpose field used primarily for youth football practice, parking in three designated areas, playground equipment, two shelters and warm weather restrooms.



**Dearborn County Parks
5-Year Master Plan
2026-2030**



**Dearborn County Parks
5-Year Master Plan
2026-2030**



**Dearborn County Parks
5-Year Master Plan
2026-2030**



**Dearborn County Parks
5-Year Master Plan
2026-2030**

Bright Meadows Park Future Projects

- Update and Upgrade Accessibility and Security
 - Integration and inclusion should be the goal of this park, with the variety of activities included at the park, providing accessibility to the activities is a priority. Inclusion aims to meet the needs of all uses.
 - Provide security features throughout the park
 - Provide more parking as this is the most used park in the county
 - Improve signage throughout the park
 - Ensure there is a full loop of paved trail through the park that is 100% accessible by all
 - Provide additional entrance from Stateline Road, while eliminating a congestion entrance along Einsel for safety reason of vehicular traffic
- Increase Outdoor Skills and Kids Education
 - Provide a fitness platform near the playground area to gather children and parents for enjoyment of the park and safety factors of families using the park together.
 - Expand natural hiking trails
 - Provide additional playground equipment in different areas of the park
 - Provide Pickleball courts
- Increase utilities for activities
 - Upgrade the water source for the park by working with the local water company to expand the water supply
 - Expand the water supply throughout the park for people and animals
 - Provide an additional restroom facility at another location of the park
 - Provide additional trash cans throughout the park
 - Winterize the restrooms to allow them to be used by citizens year round
- Provide amenities for the gathering spots throughout the park
 - Provide picnic tables with additional shelters throughout the park
 - Provide electric through solar power to the existing and proposed shelters
 - Provide more ball fields for the youth programs
 - Construct an amphitheater for social and community gathers. This will assist in bringing back the Bright Community Festival
 - Provide paver pad parking area to provide grass areas, but additional over flow parking areas for community events
 - Improve drainage throughout the park by adding a detention pond and planting more trees and vegetation throughout the park
 - Build a water splash pad
- Provide additional recreational activities and Environmental Contributing areas
 - Add a number of wetland ponds and natural, native pollinator garden beds throughout the park.
 - Provide an area for a community garden

**Dearborn County Parks
5-Year Master Plan
2026-2030**

- Other amenities and activities for citizens
 - Add scoreboards for the sport fields
 - Acquire property to the south, residential property and commercial property. One of the parcels has an old barn that could be used to increase community events. There is also land adjacent to the nearby condominiums that can be used for trail or pathway connectivity to the business district of Bright.
 - Sidewalks and cross walks to the residential subdivision across Stateline Road to promote citizens walking to the park instead of driving
 - Begin some area planning on extending sidewalks and trails through easements and purchased property to connect different areas of the Townships near the park
 - Partner with United Way on Learning Trail signage
 - Add bike racks through the park to help promote bike traffic to the park while reducing vehicular traffic to the park
 - Provide water fountains for citizens and pets throughout the park
 - Partner with Dearborn County Recycling Center to offer recycle material benches throughout the park that can be sponsored through supporters and donors of the park
- Keep property acquisition at the forefront of this park to build upon connectivity throughout the neighborhoods and the Bright area.
 - Increasing right-of-way throughout Bright, to build sidewalks that would connect the subdivisions to the park, and encourage walkability to reduce vehicular travel to the park.
 - Work with code origins offices and elected officials to create benefits for dedications and/or donations to the park system for development standard reliefs.
 - Create a master plan that would promote connectivity of the parks, through means of pedestrian and bicycle pathways throughout the County

Bright Meadows Community Park, with its high usage and location within the county's most densely populated area, should focus its priorities over the next five years on improvements facilitated through the Stellar Pathways program. This program not only enhances the park's capacity for accessibility improvements but also offers valuable assistance in securing the funding necessary to implement these enhancements. Equally important is the continued cultivation and expansion of partnerships with Bright community residents, local organizations, and area businesses. Strengthening these relationships will increase public engagement, foster a sense of pride and ownership in the park system, and ensure that future improvements reflect the needs and interests of the community.

Final Draft



Dearborn County Parks 5-Year Master Plan 2026-2030

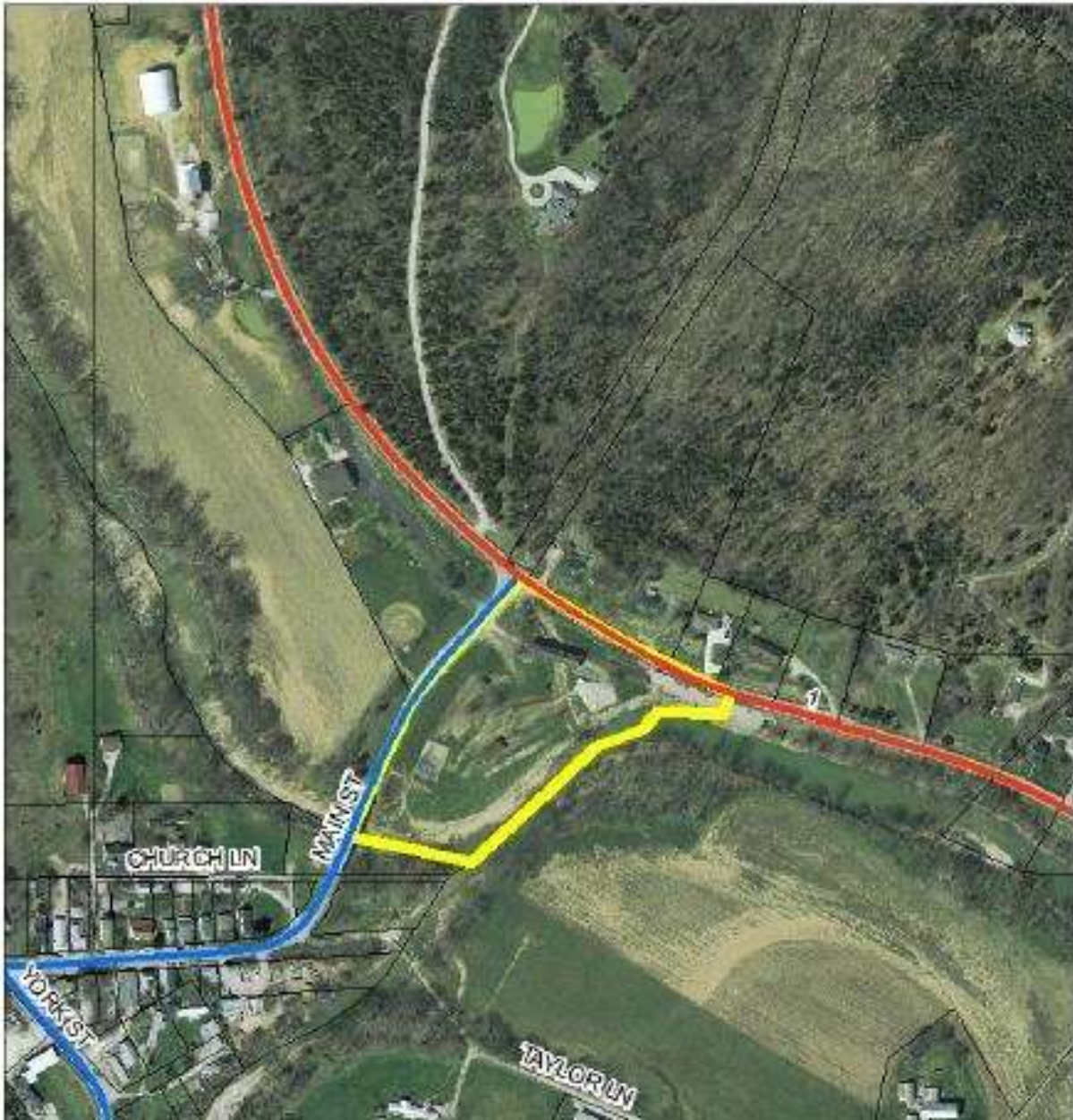
LEGEND

- ①  Playground and Amenity Space
- ②  Amphitheater/Pavilion
- ③  Plaza and Event Lawn
- ④  Barrier - Allows for Car-free Central Zone
- ⑤  Pickleball Courts - up to 6 (200'x64')
Multi-use Field - (360'x160')
- ⑥  Existing Drive - Widen
- ⑦  Asphalt Trail
- ⑧  Stone Trail



Guilford Covered Bridge Park

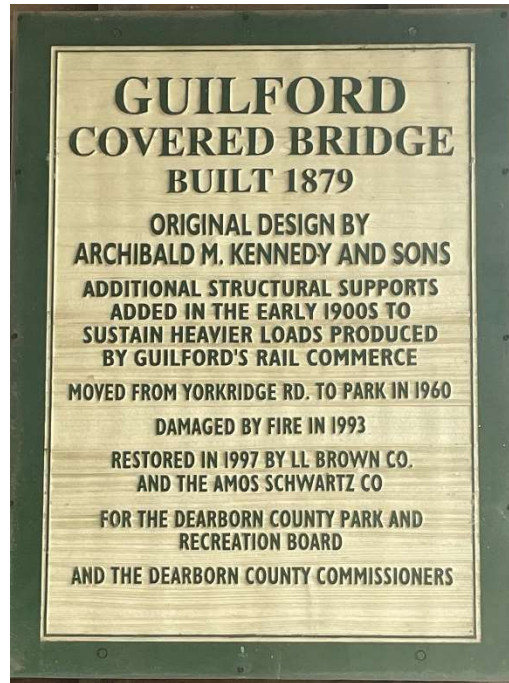
This park covers 3.54 acres and contains the restored Guilford Covered Bridge, access to Tanners Creek. The park also has summer season restrooms, a picnic shelter, basketball court, playground equipment and limited parking.



**Dearborn County Parks
5-Year Master Plan
2026-2030**



**Dearborn County Parks
5-Year Master Plan
2026-2030**



Final Draft

**Dearborn County Parks
5-Year Master Plan
2026-2030**



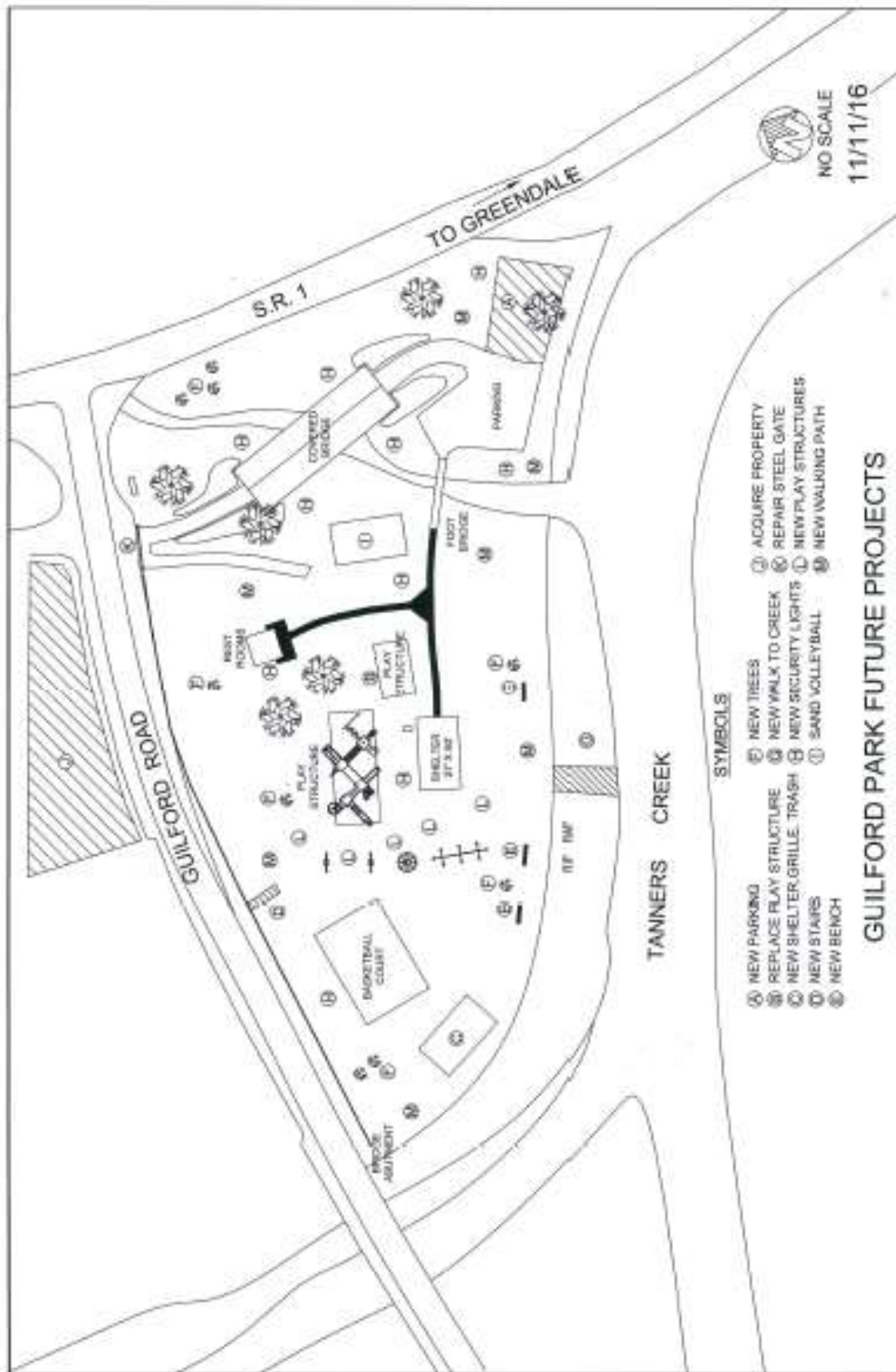
**Dearborn County Parks
5-Year Master Plan
2026-2030**

Guilford Covered Bridge Park Future Projects

- Update and Upgrade Accessibility and Security
 - Integration and inclusion should be the goal of this park, with the variety of activities included at the park, providing accessibility to the activities is a priority. Inclusion aims to meet the needs of all uses.
 - Provide security features throughout the park
 - Improve signage throughout the park
- Increase Outdoor Skills and Kids Education
 - Provide a fitness platform in the park
 - Expand the walking trail throughout the park
- Increase utilities for activities
 - Expand the water supply throughout the park for people and animals
 - Winterize the restrooms to allow them to be used by citizens year round
- Provide amenities for the gathering spots throughout the park
 - Provide additional picnic tables
 - Provide a gazebo
 - Provide an area for community or private events such as weddings, etc
- Provide additional recreational activities and Environmental Contributing areas
 - Provide environmentally friendly flood prevention and creek bank stabilization for event floods and to help preserve the history of the park
 - Provide an area for a community garden
 - Enhance the creek bank in order to provide creek fishing to citizens
- Other amenities and activities
 - Preservation of the bridge with funding opportunities and grant programs like Historic Preservation Fund
 - Research the ability to add the Bridge to the Nation Register of Historic Places/structures
 - Conservation of the creek waters edge for its natural features
 - Conduct an investigation of how to best preserve the park as it is located in the floodplain of Tanners Creek

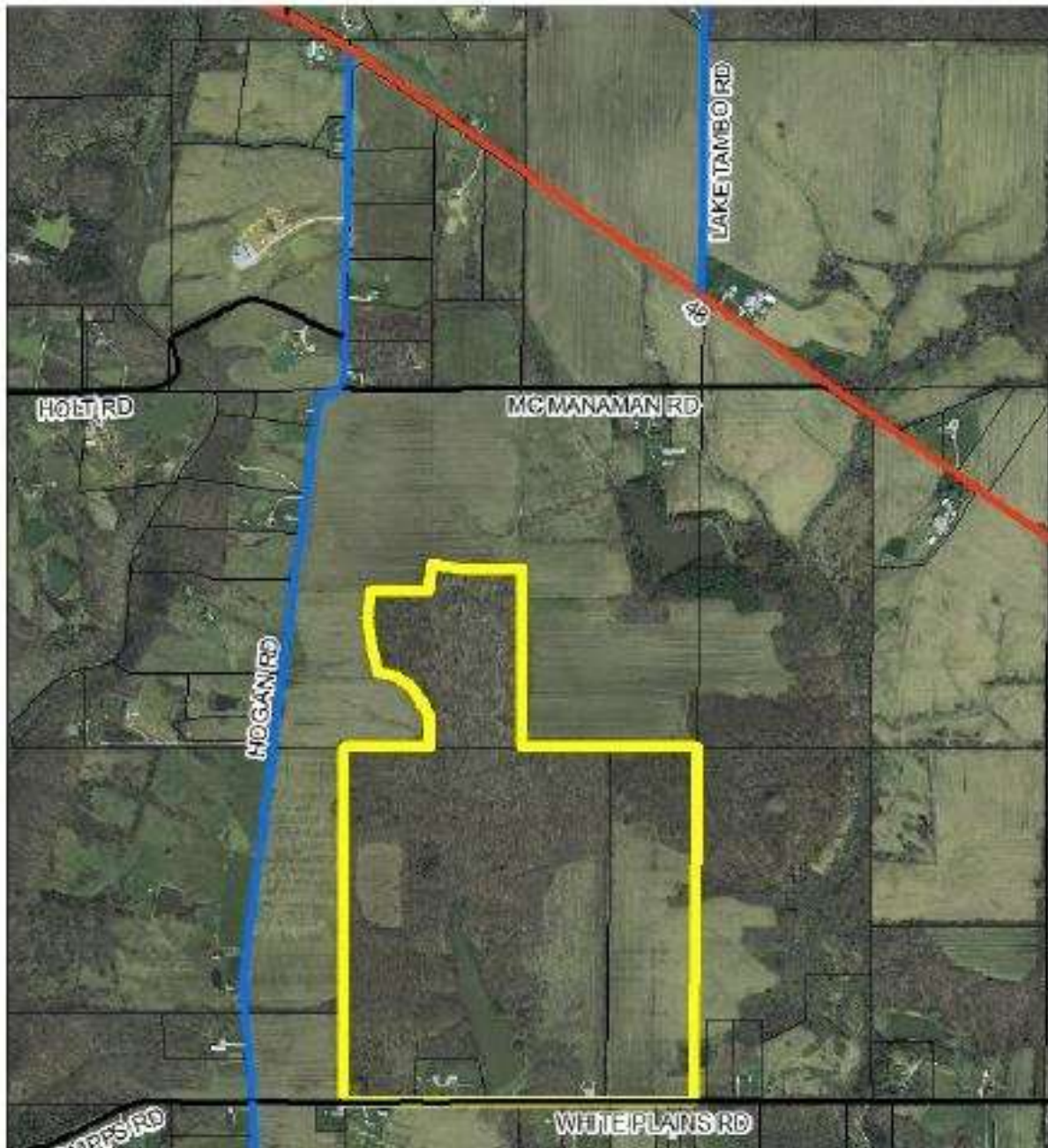
Guilford Covered Bridge Park's historic charm and preservation remain the highest priorities, reflecting the community's desire to maintain its unique character. However, the park's location within a floodplain presents ongoing challenges that must be addressed annually to protect both the park's infrastructure and natural resources. The creek frontage offers significant recreational and aesthetic benefits, providing opportunities for nature observation and passive recreation, but it also requires careful planning and management to mitigate flood risks and ensure public safety. Balancing preservation, accessibility, and floodplain management will be essential in maintaining the park's value and usability for the community.

**Dearborn County Parks
5-Year Master Plan
2026-2030**



Gladys Russell Wildlife Park

This park covers 149.39 acres, is designated as a wildlife refuge and has a large number of activity areas. The park has extensive wooded areas with hiking and horse-back riding trails, two native grass prairies, open grass areas, a fishing lake with handicap accessible fishing dock, a restored wooden barn suitable for group activities, handicap accessible summer season restrooms, a covered picnic shelter with a cooking grille and three parking lots.



Dearborn County Parks
5-Year Master Plan
2026-2030



**Dearborn County Parks
5-Year Master Plan
2026-2030**



Dearborn County Parks 5-Year Master Plan 2026-2030



Gladys Russell Wildlife Park Future Projects

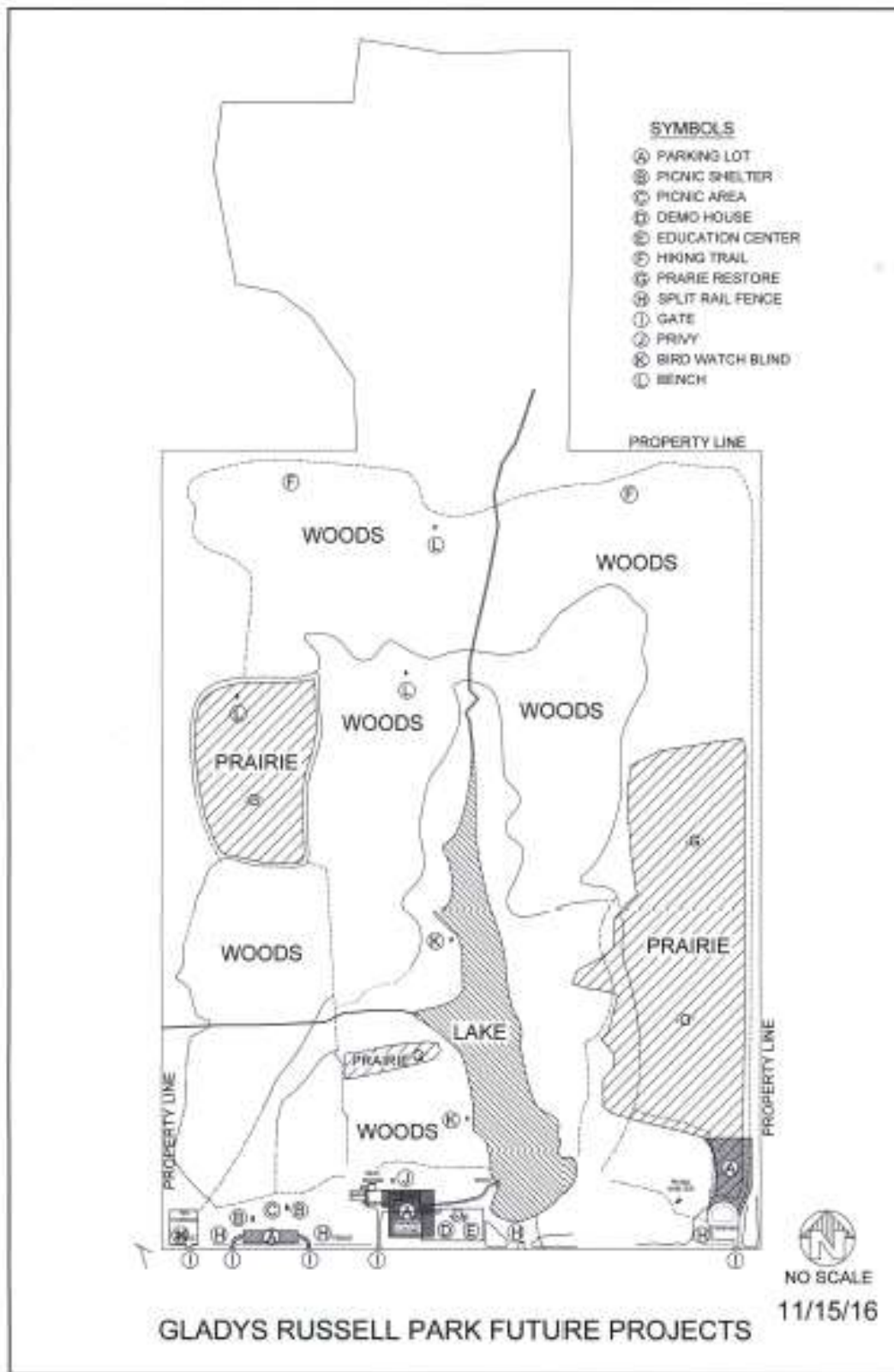
- Update and Upgrade Accessibility and Security
 - Integration and inclusion should be the goal of this park, with the variety of activities included at the park, providing accessibility to the activities is a priority. Inclusion aims to meet the needs of all uses.
 - Provide more paved parking
 - Provide security features throughout the park
 - Improve signage throughout the park
 - Provide paved trails throughout the park
- Increase Outdoor Skills and Kids Education
 - Provide a fitness platform in the park
 - Expand the walking trail throughout the park
 - Provide playground equipment in different areas of the park
- Increase utilities for activities
 - Expand the water supply throughout the park for people and animals
 - Expand restroom facilities
 - Winterize restroom to allow facilities to be used year round
- Provide amenities for the gathering spots throughout the park
 - Provide additional picnic tables
 - Provide a gazebo
 - Increase the ability for reservations of events in the rustic pole barn
- Provide additional recreational activities and Environmental Contributing areas
 - Provide an area for a community garden

**Dearborn County Parks
5-Year Master Plan
2026-2030**

- Provide new education and visitor center for the County and all parks
- Provide horseback riding trails and trailer parking
- Other amenities and activities
 - Investigate a means to provide heat to the barn and restrooms to allow community activities and event throughout the year
 - Trailhead signage and provide maps for trails throughout the park
 - Stocking the pond with fish
 - Educational signage for native fish that would be in the pond
 - Continue to add length to the existing hiking trails
 - Provide mountain bike trails
 - Add a dock to the pond to allow kayaking in the pond
 - Add more shelters
 - Add additional docks to allow for easier fishing from the waters edge of the pond
 - Work towards Dark Sky Certification

Gladys Russell Park is distinguished by its unique combination of natural features and structural amenities, offering both a preserved natural environment and the capacity to host community events. The park's highest priority is enhancing accessibility, given its frequent use for gatherings and events that draw significant participation. Improving accessibility will ensure that all visitors, regardless of ability, can fully enjoy both the park's natural and built features. Additional priorities include expanding the use of the park's environmental amenities, such as its trails, open spaces, and natural areas, to encourage greater interaction with and appreciation of the natural surroundings. Future improvements should focus on balancing the preservation of the park's natural character with the development of amenities that enhance usability, engagement, and overall visitor experience. Strengthening accessibility and thoughtfully expanding programming will help Gladys Russell Park continue to serve as both a recreational and community hub for residents.

Dearborn County Parks 5-Year Master Plan 2026-2030



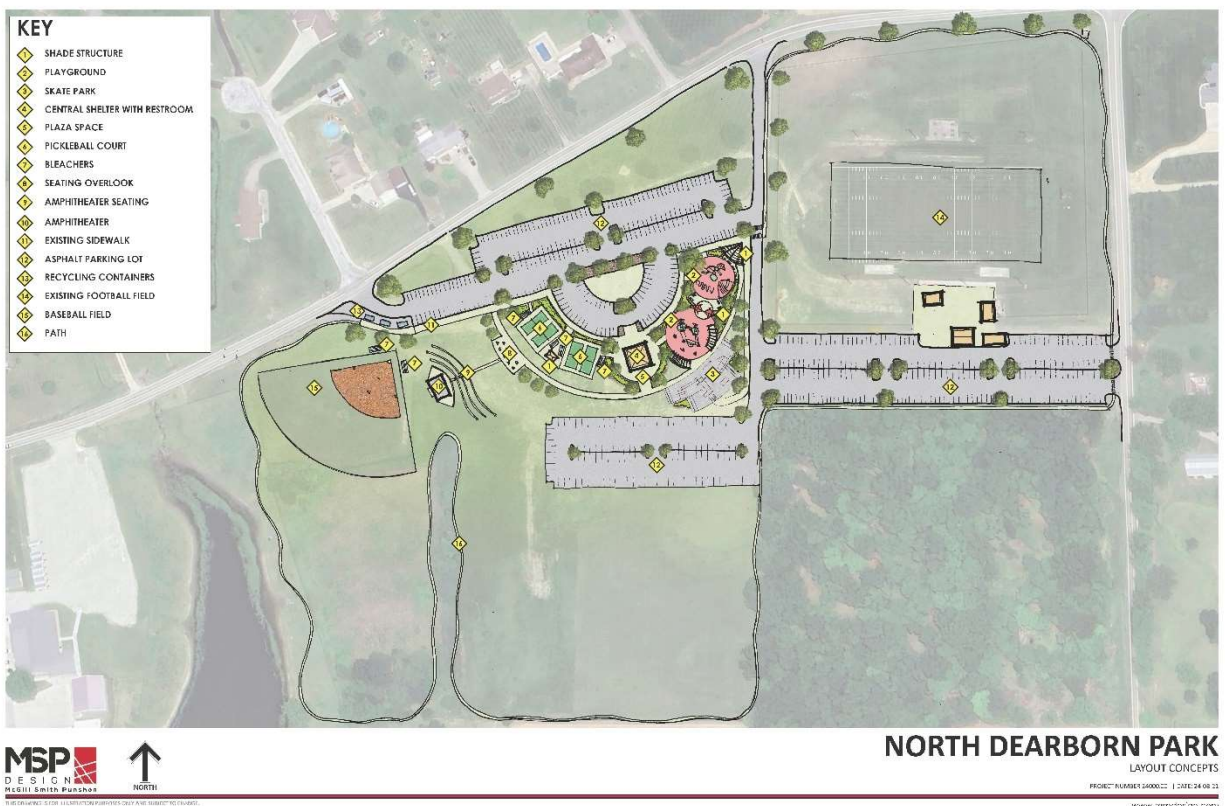
**Dearborn County Parks
5-Year Master Plan
2026-2030**

Future Park Planning

North Dearborn Community Park

A local non-for-profit organization (501c3) has secured a lease with the Sunman Dearborn Community School Corporation, to provide a community park at the old location of the North Dearborn Elementary School that was closed and later demolished. The plan for the park is to provide a safe place for the community to gather to Move, Play and Thrive!! The project will be completed in two phases with the initial phase including the addition of a one-mile walking, running, and biking path around the perimeter of the property. The second phase will include playground equipment, including a sensory area and a potential basketball court and shelter.

Currently the property has been leased to the North Dearborn Community Park organization by the Sunman Dearborn Community School Corporation for a 20-year term. All current and future planned improvements are at the expense of the organization through grants, corporate sponsors and donations.



Future Park Board Activities and Initiatives

The Park Board has compiled the following list of possible improvements and development for long range planning, strategies, initiatives and programs. These would

**Dearborn County Parks
5-Year Master Plan
2026-2030**

be achieved through continuous planning, determination, citizen participation, future partnerships, and implementation plans.

- Board believes that the creation of a department and hiring of a Director would provide the continuous guidance for the goals for the Park Board and add value to establish a connection with public involvement activities
- 4H and Scouts involvement and participation for activities and maintenance of the parks
- Inclusion of schools—FFA, science classes, volunteer programs, community gardening
- Beekeeping, Bird watching
- Agriculture activities—demonstration farming, learning farming technics, farm leasing, timbering, lumbering
- Creating new parks in areas of growing population
- Public access to the local rivers and creeks through a parks system
- Regularly scheduled public involvement activities and input to determine local support and needs of the community
- Evaluate the need to staff to establish a Parks Department to help with the maintenance of all the parks, long range planning, reservations of park facilities and developing funding opportunities to continue to add improvements to all parks
- Perform ADA evaluation of facilities and grounds to enhance the development of improvement projects to improve accessibility for all citizens in the parks
- Develop a program to charge fees for park facility reservations to offset operating and maintenance cost

Final Draft

**Dearborn County Parks
5-Year Master Plan
2026-2030**

Board Resolution and Adopting of Final Plan

The final Dearborn County 5-Year Parks Master Plan was approved by IDNR April 15, 2026. The Dearborn County Park Board scheduled a final public meeting for the adoption of the plan on June 6, 2026, where there were no further public comments during this meeting. The Board approved the plan with a anonymous vote, all five boards members in favor of the Master Plan.

Final Draft

**Dearborn County Parks
5-Year Master Plan
2026-2030**

Board Resolution Adopting Plan

WHEREAS, the Dearborn County Park Board is aware of the parks and recreation needs of the residents of Dearborn County, Indiana, and

WHEREAS, the Board realizes the importance of sound planning in order to meet the needs of its citizens,

NOW, THEREFORE, BE IT RESOLVED THAT THE DEARBORN COUNTY PARK BOARD, by unanimous declaration, does adopt the Dearborn County Parks 5-year Master Plan as its official plan for the next five years, for the growth and development of parks and recreational opportunities in Dearborn County.

Passed and signed this 20th day of June , 20__ .

ATTEST:

President

Park Board Attorney

Final Draft

When you have completed the survey, please email it to ndaily@dearborncounty.in.gov or mail it to
Attn: Park Board--165 Mary Street, Lawrenceburg, IN 47025
Any questions please call (812) 537-8821

2025 Dearborn County Park Master Plan Update - Public Questionnaire

Dearborn County Park Board is currently updating its Five-Year Master Plan and would like your feedback on the following questions in order to improve this process and our lovely parks. The Master Plan is used by the Park Board to provide a strategic plan and goals for all 5 County Parks over the next five years and to prioritize projects in each park. The Master Plan is also used to assist the Park Board in applying for possible grants that can be a great asset in getting improvements completed at the parks. Please take the time and complete the survey below. We appreciate any feedback we receive. We will be accepting surveys up until the end of September 2025.

Park Master Plan Misson Statement

To provide and improve the physical, cultural and economic environment of Dearborn County by providing the maximum enjoyment and satisfaction to the residents and visitors through natural and man-made features in the landscape of designated park areas. With breathtaking hilltops, landscapes, and rivers as natural assets, we will invest in amenities, extensive trails, and park enhancements to support these assets, positioning our region as a premier destination for outdoor enthusiasts and a retreat to simpler living.

1. Please tell us things that you would change about the Misson Statement.....

2. Please check all that apply to you:

- I live in the unincorporated areas of Dearborn County ☐
I live in one of the incorporated towns or cities within Dearborn County ☐
I live in another Indiana County ☐
I live in Ohio or Kentucky ☐
I work in Dearborn County unincorporated* areas ☐
I work in one of the incorporated towns or cities within Dearborn County ☐
I work in another Indiana County ☐
I work in Ohio or Kentucky ☐
None that apply ☐
*(Unincorporated areas are those within a County not governed by a city or town)

3. How long have you lived in Dearborn County:

- 0 to 1 year ☐
1 year to 5 years ☐
6 years to 10 years ☐
11 years to 20 years ☐
Over 20 years ☐
I have lived here all my life, born and raised ☐

4. Did you know that there are 5 parks within Dearborn County

- YES ☐ NO ☐

5. Have you or any of your household members visited one of the County maintained parks within the last 5 years

YES ☐ NO ☐

If YES please check all parks below that have been visited by you or our household

County Farm Park	<input type="checkbox"/>	Rullman Wildlife Refuge	<input type="checkbox"/>
Gladys Russell Wildlife Refuge	<input type="checkbox"/>	Bright Meadows Community Park	<input type="checkbox"/>
Guilford Covered Bridge Park	<input type="checkbox"/>		

If you have not visited a County Park please explain why

6. Please rank your favorite Park from best to least favorite (1 being the best)

County Farm Park	_____	Rullman Wildlife Refuge	_____
Gladys Russell Wildlife Refuge	_____	Bright Meadows Community Park	_____
Guilford Covered Bridge Park	_____		

7. Overall, how would you rate the condition of all the Dearborn County parks

Excellent ☐ Good ☐ Fair ☐ Poor ☐
I haven't visited any of the parks ☐

8. Please check all the reason you don't frequent the parks as often or that you don't visit them at all

- ☐ Use parks and trails within the city limits
- ☐ The parks are too far from your house
- ☐ Parks and trails are not well maintained
- ☐ Lack of features you would like to use
- ☐ Lack of parking to access park facilities and activities
- ☐ Do not feel the parks are safe
- ☐ Lack of handicap accessibility
- ☐ Was not aware of the parks and what each park offers
- ☐ Lack of restrooms
- ☐ None of the above, nothing prevents us from frequenting the parks
- ☐ Other....Please provide reason

9. Please rate your level of agreement with the following statements on the benefits of parks in Dearborn County

	Agree	Neutral	Disagree	No Opinion
Helps attracts new residents and businesses	_____	_____	_____	_____
Helps to reduce crime	_____	_____	_____	_____
Helps improves mental and physical health	_____	_____	_____	_____
Increases my property value	_____	_____	_____	_____
Improves overall quality of life	_____	_____	_____	_____
Is age friendly & accessible to all ages	_____	_____	_____	_____
Positively impacts economic development	_____	_____	_____	_____
Preserves open space/protects environment	_____	_____	_____	_____
Provides positive social interaction	_____	_____	_____	_____
Other benefits				

10. Which Park facilities have you used in the past 5 years

- | | | |
|--|---|--|
| <input type="checkbox"/> Hiking (natural floor trails) | <input type="checkbox"/> Frisbe Golf | <input type="checkbox"/> Playgrounds |
| <input type="checkbox"/> Club sport activities | <input type="checkbox"/> Pickle Ball | <input type="checkbox"/> Basketball |
| <input type="checkbox"/> Shelters / Picnic Areas | <input type="checkbox"/> Horseback Riding | <input type="checkbox"/> Catch and release fishing |
| <input type="checkbox"/> Bird Watching (wildlife) | <input type="checkbox"/> Facilities for family gatherings or celebrations | |
| <input type="checkbox"/> Paved walking paths | | |

11. How willing would you be to pay additional taxes or fees that would be collected strictly for the use to the parks to acquire, develop, improve and maintain the parks in Dearborn County

Yes ☐ Maybe ☐ Definitely Not ☐

12. What types of additional facilities or services or recreational opportunities would you like added to the parks

Please check the top five (5) additions you would like to see at the parks that are important to you:

- ☐ Dark Sky (area of less amount of light pollution for star gazing)
- ☐ Movies in the Park
- ☐ Farmers Markets
- ☐ Senior Exercise programs
- ☐ Music in the Park (concerts/music events)
- ☐ Nature/Environmental learning programs
- ☐ Arts and Crafts programs
- ☐ Dog Parks
- ☐ Outdoor Fitness pods / platforms
- ☐ UTV/side by side trails
- ☐ Access to natural water features (kayaking, boating, fishing, etc.)
- ☐ More Restrooms
- ☐ Picnic type facilities (grills, shelters, electric power, etc.)
- ☐ Pavilions / Amphitheater
- ☐ Community Gardens
- ☐ More Indoor Rental Buildings
- ☐ Water features / Splash pad
- ☐ Rentable spaces (shelters, halls, camping, etc.)

Please give examples below of park or recreational options you would like to see in Dearborn County Parks:

13. Are you overall satisfied with the quality of parks in Dearborn County?

- ☐ Very satisfied
- ☐ Satisfied
- ☐ Dissatisfied
- ☐ Very Dissatisfied

14. How does the quality of parks compare to ten years ago in Dearborn County?

- ☐ Much Better
- ☐ Somewhat Better
- ☐ About the Same
- ☐ Somewhat Worse
- ☐ Much Worse

15. What improvements should Dearborn County Parks make, goals to achieve, or objectives or policies to include for the future of the County parks system?

16. We would appreciate any other comments you may have related to the Dearborn County Parks and this master plan process:

17. If you would like to become a volunteer to help with maintenance of the parks, please provide contact information below

18. If you would like to have email updates on the process of the Dearborn County Parks Master Plan Update, please provide your email below and you will be added to our citizen group list:

Upcoming Workshop Dates

July 26, 2025 (Saturday)—Bright Meadows Community Park, learn a little about the parks and fill out a survey, the Dearborn County Parks will also be represented in the parade, from 10am to 1pm

August 7, 2025 (Thursday)—At the Guilford Cover Bridge Park from 6:00pm to 8:00pm

August 23, 2025 (Saturday)—At the Bright Meadows Community Park from 9:00am to 12:00pm

September 11, 2025 (Thursday)—At the Gladys Russell Wildlife Refuge from 6:00pm to 8:00pm

Dearborn County Parks Survey Results: 2024 Community Involvement

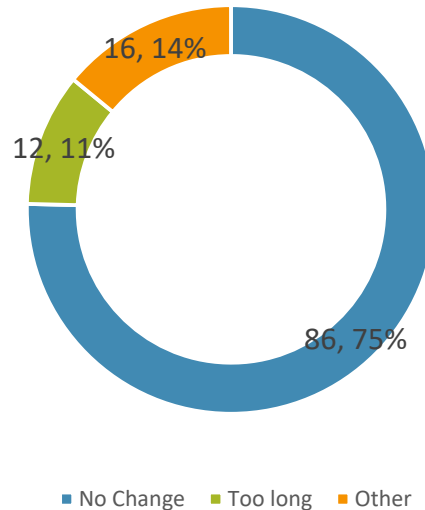


Dearborn County Parks Vision Statement

To provide and improve the physical, cultural and economic environment of Dearborn County by providing the maximum enjoyment and satisfaction to the residents and visitors through natural and man-made features in the landscape of designated park areas. With breathtaking hilltops, landscapes, and rivers as natural assets, we will invest in amenities, extensive trails, and park enhancements to support these assets, positioning our region as a premier destination for outdoor enthusiasts and a retreat to simpler living.

Question 1. Respondents were asked what they should change about the vision statement:

Figure 1. Vision Statement Changes



The figure above (**Figure 1**) shows the percentage and total responses to changes in the Dearborn County Parks Vision Statement. Majority of residents felt no need to change the vision statement, and a small portion of respondents believed it was too long. The category of other was respondents who wrote other comments those other comments are shown below:

Our mission is to enhance the physical, cultural, and economic environment of Dearborn County by maximizing enjoyment and satisfaction for both residents and visitors. Through the thoughtful stewardship of our natural and mad-made park features, we will highlight the County's breathtaking hilltops, scenic landscapes, and rivers. By investing in modern amenities, expansive trails, and meaningful park enhancements, we aim to position Dearborn County as a premier destination for outdoor recreation and a haven for those seeking the simplicity and beauty of rural life.

*"With breathtaking hilltops, landscapes, and rivers as natural assets, we will invest in amenities, extensive trails, and *more car washes* to support these assets, positioning our region as a premier destination for outdoor enthusiasts and a retreat to simpler living."*

More for kids and families

Horse Trails!

Mission statement should include something about athletic fields. Parks should provide youth athletic recreation fields as well as nature and trails.

I would love a more natural playground area. The Morton Arboretum in Illinois is a good example! From an Occupational Therapist standpoint, this and a splash pad would be beneficial to the kids in the surrounding area. Plus, a splash pad will bring more surrounding communities to the area because there are not many rounds here.

I would really like to see a basketball court where the kids would not have to play in the parking lot. Also, a bike trail beside the walking trail. It would give adults a place to ride besides in the road.

Splash Pad

Maybe add something about the safety and security of the public while utilizing the facilities.

Pavement upkeep.

You need to invest heavily in the park system to achieve the mission as it is currently not a destination for recreation. I truly hope it becomes one though.

Provision of the safety and cleanliness of each site is priority.

Any educational opportunities

I would suggest adding how you would support these amenities. An essential aspect of the mission statement is the how. You mention you'll invest in these amenities, but how? I would write: "with breathtaking hilltops, landscapes, and rivers as natural assets, we will invest in amenities, extensive trails, and park enhancements to support these assets by..."

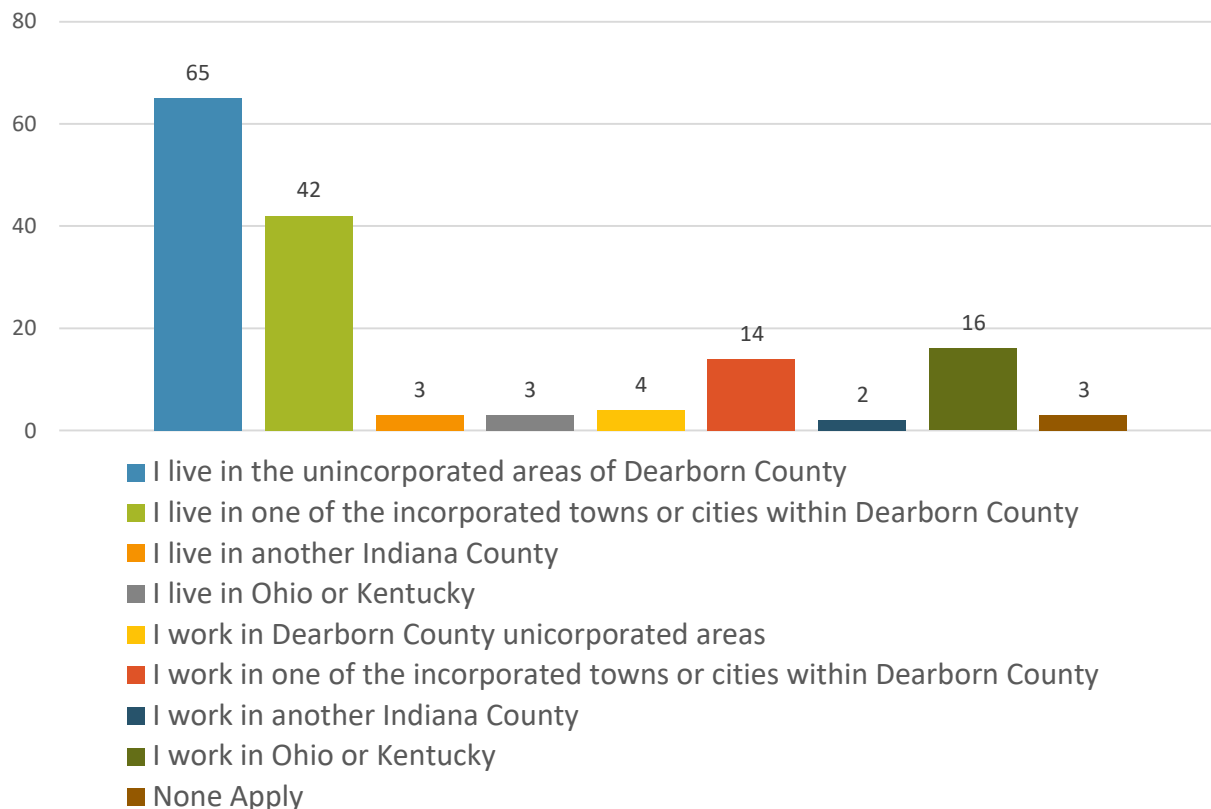
Actually, do it! 5 parks (small) in the whole county shows a lack of aggressive acquisition to preserve and enhance the assets listed above

Include something about environmental conservation

Question 2. Respondents were asked their relationship to Dearborn County. **Figure 2** shows the distribution of respondent's relationship to Dearborn County. Majority of respondents lived in Unincorporated Dearborn County, with the second largest demographic belonging to the

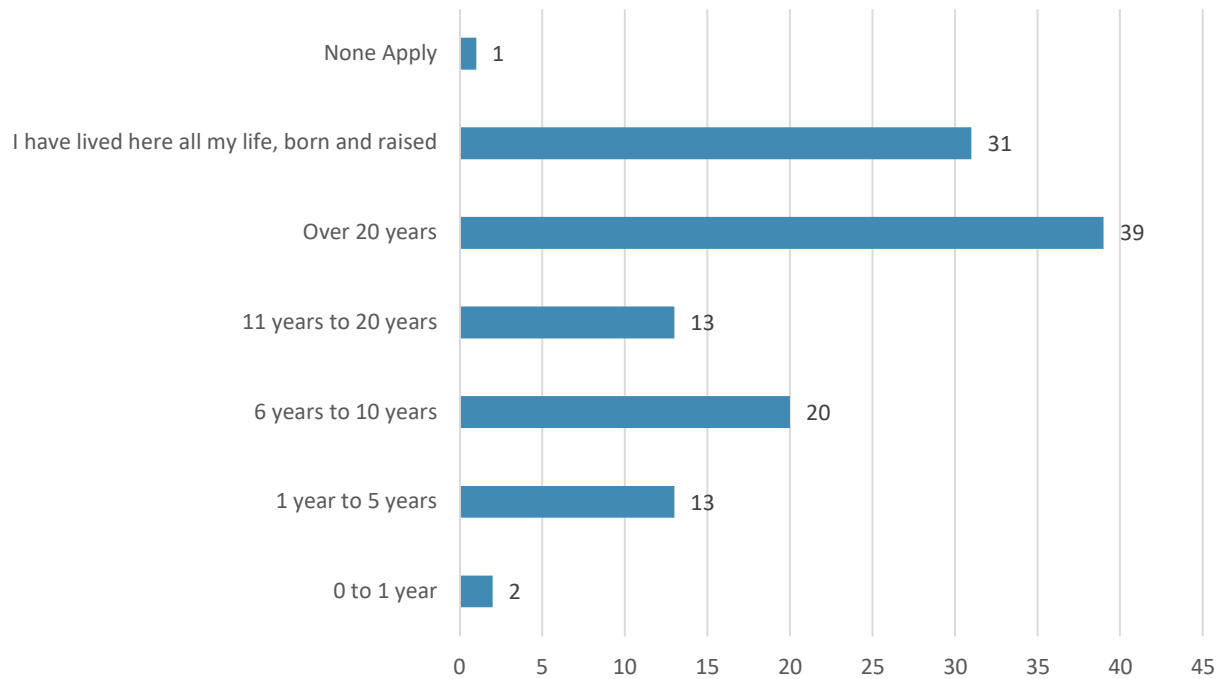
incorporated cities and town. A small portion of respondents lived out of state in Ohio or Kentucky.

Figure 2. Relationship to Dearborn County



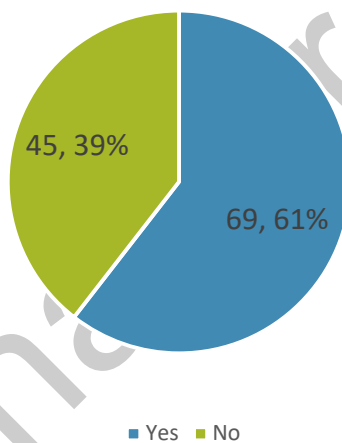
Question 3. Respondents were asked how long they have resided in Dearborn County. **Figure 3** shows the distribution of respondent's duration living in Dearborn County. Majority of respondents have lived in Dearborn County over 20 years. The second largest category were those who have lived here all their lives. Respondents were able to select multiple durations, so some individuals selected over twenty years and all their lives. There were few respondents who only recently moved to Dearborn County with only 15 respondents moving to the County within the last 5 years.

Figure 3. Duration in Dearborn County



Question 4. Asked respondents if they were aware Dearborn County has 5 parks? **Figure 4** shows that majority of respondents were aware Dearborn County has 5 parks. However, a significant percentage of respondents, 39%, were not aware of all the County Parks. The large portion of respondents who were unaware of the parks suggest a lack of community communication and connection.

Figure 4. Dearborn County Parks Known



Question 5. Asked respondents if they or anyone in their household had visited a County Park in the last 5 years, and if so, which parks they had visited. **Figure 5** shows majority of respondents had visited at least one of the County maintained parks in the last five years. **Figure 6** shows which of the parks were visited in the last 5 years. The top two visited parks were by far Bright Meadows and Guilford Covered Bridge.

Figure 5. Parks Visited in Last 5 Years

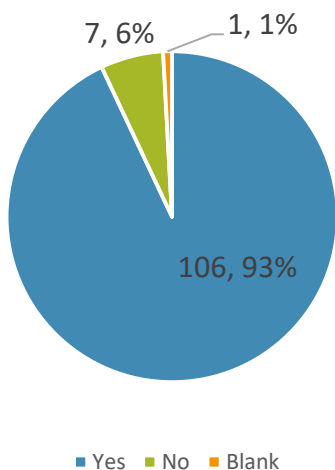
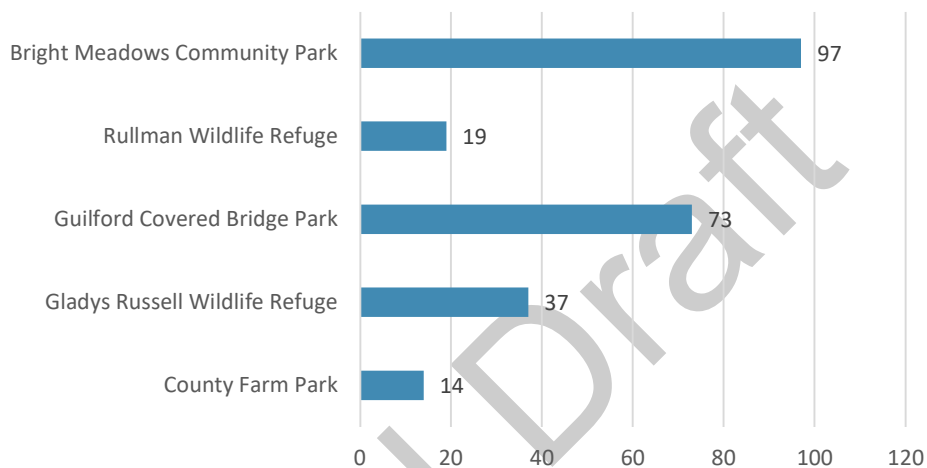


Figure 6. Parks Visited in Last 5 Years



Individuals who did not visit a County Park in the last 5 years were asked why not? Those comments are shown below:

I wasn't aware of the Bright Meadows Community Park and don't live near that area of the County.

I live on 90 acres and have trails I hike. I have visited Rullman and Bright Meadows but not recently.

I don't know where they are or what they offer.

Unaware of them or the locations.

I live near Bright Meadows. I have only been to the Guilford Park once, and don't know where others are.

I spend most of my time at Brookville Lake and occasionally at Miami Whitewater Park. Also, I have 10 acres of land with water features and trails of my own, I would like to visit these parks though and plan to attend as many of the 1Dearborn events schedules in the next two months.

Didn't know they were there

Just not aware of them.

Question 6. Asked respondents to rank the Dearborn County Parks from their best to least favorite, with 1 being the best. **Figure 7** is a chart of the ranks given to each park at each level. It should be noted respondents were able to give categories the same score, so in some surveys all parks were given 5s or multiple parks were given 1s. The average score of each park was calculated and highlighted in blue below. The favorite parks of respondents were as follows from most favorite to least favorite: Bright Meadows Community Park, Guilford Covered Bridge Park, Gladys Russell Wildlife Refuge, Rullman Wildlife Refuge, and County Farm Park.

Figure 7. Parks Ranked	1	2	3	4	5
County Farm Park	6	12	30	14	39
Gladys Russell Wildlife Refuge	15	19	26	36	10
Guilford Covered Bridge Park	19	45	21	16	8
Rullman Wildlife Refuge	10	15	21	29	30
Bright Meadows Community Park	70	19	3	2	17

County Farm Mean: $1 \times 6 = 6$, $2 \times 12 = 24$, $3 \times 30 = 90$, $4 \times 14 = 56$, $5 \times 39 = 195$, $6 + 24 + 90 + 56 + 195 = 371$, $6 + 12 + 30 + 14 + 39 = 101$, $371 / 101 = 3.7$

Gladys Russell Mean: $1 \times 15 = 15$, $2 \times 19 = 38$, $3 \times 26 = 78$, $4 \times 36 = 144$, $5 \times 10 = 50$, $15 + 38 + 78 + 144 + 50 = 324$, $15 + 19 + 26 + 36 + 10 = 106$, $324 / 106 = 3.1$

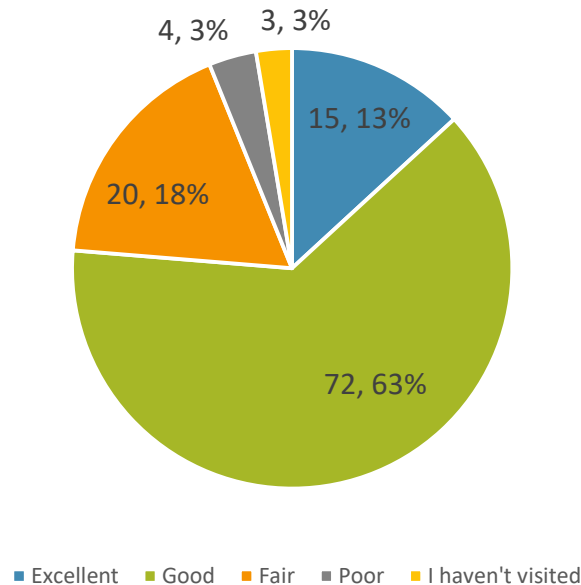
Guilford Bridge Mean: $19 \times 1 = 19$, $45 \times 2 = 90$, $21 \times 3 = 63$, $16 \times 4 = 64$, $8 \times 5 = 40$, $19 + 90 + 63 + 64 + 40 = 276$, $19 + 45 + 21 + 16 + 8 = 109$, $276 / 109 = 2.5$

Rullman Wildlife Mean: $1 \times 10 = 10$, $15 \times 2 = 30$, $3 \times 21 = 63$, $4 \times 29 = 116$, $5 \times 150 = 750$, $10 + 30 + 63 + 116 + 750 = 1059$, $10 + 15 + 21 + 29 + 30 = 105$, $1059 / 105 = 10.08$

Bright Meadows Mean: $1 \times 70 = 70$, $2 \times 19 = 38$, $3 \times 3 = 9$, $4 \times 2 = 8$, $5 \times 17 = 85$, $70 + 38 + 9 + 8 + 85 = 210$, $70 + 19 + 3 + 2 + 17 = 111$, $210 / 111 = 1.9$

Question 7. Asked respondents to rank the condition of Dearborn County Parks. Majority of the respondents stated the County Parks are in good condition.

Figure 8. Park Conditions



Question 8. Asked respondents to check the reasons they do not frequent the parks as often, and if a reason was not shown to write that reason. The top two reasons given for not visiting Dearborn County Parks were: Was not aware of the parks and what each park offers or Lack of features you would like to use. Additional reasons as to why respondents did not frequent the parks as often are shown in italics below.

Figure 9. Reasonings for not visiting Dearborn County Parks

Please check all the reasons you don't frequent the parks as often or that you don't visit them at all	Count
Use parks and trails within city limits	14
The parks are too far from your house	22
Parks and trails are not well maintained	8
Lack of features you would like to use	42

Lack of parking to access park facilities and activities	9
Do not feel parks are safe	2
Lack of handicap accessibility	3
Was not aware of the parks and what each park offers	44
Lack of restrooms	11
None of the above, nothing prevents us from frequenting the parks	39

Parks are poorly advertised and do not protect the assets described in the mission.

Lack of time to visit them.

I am usually looking for a longer hiking trail than what is at our county parks.

No longer live in Dearborn County.

The closer parks provide what my family likes and is close by.

I live in Ripley County so we frequent their parks more often but we do enjoy Dearborn County Parks also.

Was not aware of the accessibility of all of the parks and what they offer.

I love to fish and hike so for me trail maintenance as well as pond keep up keep are big for me. I love Gladys Russell Park to hike and fish however; the trails are littered with large fallen trees that are impassible. The lake that is on site so far this year has been covered with moss and algae and high weeds making it difficult to fish. I would love to see more fishing access areas besides the dam, dock, and small grassy area on the east side. Or maybe allow kayaks with paddles only on the water to better access fishing spots and install a kayak launching platform like Versailles state park. I feel that will enhance any outdoorsman experience and pond treatments to control algae growth.

Question 9. Asked respondents to rate their level of agreement with the following statements on the benefits of parks in Dearborn County. **Figure 10** shows the agreement of responds to each of the statements. The number one category agreed on by respondents was that parks help to improve mental and physical health. Respondents were also able to comment additional benefits of parks, which are shown in italics below.

Figure 10. Benefits of Parks	Agree	Neutral	Disagree	No Opinion
Helps attract new residents and businesses	63	38	9	4
Helps to reduce crime	34	47	22	11

Helps improve mental and physical health	107	5		2
Increases my property value	72	33	3	6
Improves overall quality of life	103	9		2
Is age friendly & accessible to all ages	87	20	3	4
Positively impacts economic development	73	30	3	8
Preserves open space/protects environment	102	9	2	1
Provides positive social interaction	102	10		2

Other benefits comments:

Protects what residents of the County enjoy.

*Provides neutral location for parent visitation exchanges. Provides public/family event space.
Provides community education opportunities.*

Wildlife habitat and corridors.

Place to meet friends and exercise.

Exercise and recreation.

Everyone needs to be outside and breath.

Plenty of outdoor recreation activities.

My dog would be happy

Horse riding trails at Gladys Russell!!!

Place for families and kids

Provides sense of community

Get children off electronic devices!

Allows for free playtime and space for children.

Provides healthy activities for kids.

Need to preserve greenspaces

Parks encourage families to get outside and enjoy God's creation! They give opportunities for people within the community to meet and forge friendships. Parks are such a gift!

My kids love the playground! I only wish the 5-year plan came sooner because my youngest may be too old in 5 years.

Question 10. Asked respondents which of the park facilities they have used in the last 5 years.

Figure 11 shows the top used facility is paved walking paths, followed by playgrounds, and then shelters/picnic areas. The least used facility is horseback trails.

Figure 11. Which Park facilities have you used in the past 5 years?	Count
Hiking (natural floor trails)	59
Club Sport Activities	28
Shelters/Picnic Areas	74
Bird Watching (Wildlife)	19
Paved Walking Paths	93
Frisbee Golf	14
Pickle Ball	16
Horseback Riding	6
Facilities for Family Gatherings or Celebrations	34
Playgrounds	75
Basketball	19
Catch and Release Fishing	15

Question 11. Asked respondents if they would be willing to pay additional taxes for the parks.

Figure 12 shows their responses. Majority of respondents were open to the possibility of additional taxes, with only 20% strongly opposed.

Figure 12. How willing would you be to pay additional taxes or fees that would be collected strictly for the use to the parks to acquire, develop, improve and maintain the parks in Dearborn County?	Count
Yes	31
Maybe	60
Definitely Not	23

Question 12. Asked respondent what additional facilities or services or recreational opportunities they would like added to the parks. **Figure 13** shows the respondent support for

each additional facility type. The most popular facility wanted by responded was water features/splash pad, followed by farmer's markets, and access to natural water features. There was not a huge demand for indoor rental spaces, or side by side trails.

Figure 13. What types of additional facilities or services or recreational opportunities would you like added to the parks?	Count
Dark Sky (area of less amount of light pollution for star gazing)	40
Movies in the park	44
Farmers Markets	62
Senior exercise programs	15
Music in the park (concerts/music events)	51
Nature/Environmental learning programs	41
Arts and crafts programs	30
Dog parks	19
Outdoor fitness pods/platforms	32
UTV/side by side trails	10
Access to natural water features (kayaking, boating, fishing, etc.)	60
More restrooms	36
Picnic type facilities (grills, shelters, electric power, etc.)	33
Pavilions/amphitheater	16
Community gardens	28
More indoor rental areas	8
Water features/Splash pad	80
Rental spaces (shelters, halls, camping, etc.)	35

Examples of recreational options wanted:

Areas large enough to spend time outdoors, enjoy nature, and designed to minimize impact from normal use.

More multi-age and multi-ability structures. Artistic displays.

More horseback riding trails

Enclosed pickleball courts.

Small game hunting. Mountain Bike Trails.

Do the parks have maps? A list of amenities at each park? I didn't know what is available, I thought the city parks were the county parks.

Pickleball

I would like to see a community swimming pool at bright park.

Horse trails

Splash pad

It would be great to have facilities/opportunities that allow parents to take their kids to play, unwind, and burn energy. Having something like a splash pad park or farmers markets anywhere else besides downtown Lawrenceburg that would bring together the residents in areas such as Bright, West Harrison, St. Leon.

Well maintained hiking trails

In Osgood there is a walking trail that goes around the lake there and it is quite nice; it is where I proposed to my wife. It would be nice to have something similar in Dearborn.

Splash pad for kids!

Splash pad would be fun for the kids.

North Dearborn Community Park would be a perfect spot for a community pool like other pools in city limits. There are no pools in Bright or surrounding areas of Logan/Guilford.

I personally enjoy the nature and undeveloped areas of the parks. Don't necessarily want them all turned into something like summit park in blue ash.

Community pool or splash pad.

I'd love for a splash pad and more hiking/biking trails to be available! We live in Avon, In for 3 years, and their parks were incredible- if we could have parks similar to theirs in this area, I think that would be an incredible service to our community.

Playground with enclosed fence. Please see arch street park in Lawrenceburg for reference.

Splash pad in Bright!

Mountain bike trails. Bowhunting program.

With not having the Bright Fireman's Festival anymore it would be nice if the Bright Community Park did something that attracted the locals to participate in. I.e. Music nights, food trucks, wiffle ball tournaments, etc.

Year-round bathroom access. More shelters, maybe an indoor building that could be rented.

Splash pad would be amazing. Private camping area.

I have little ones, more space for them, plus water feature/splash pad!

Swimming pool for residents on the North side of the county, playgrounds, music venue, pavilion, restrooms.

A splash pad would be great for kids and a movie in the park would be so much fun.

Fishing and kayaking/canoeing. More hiking trails and playgrounds. Liberty Park in Batesville is a good example of an all-encompassing park.

Question 13. Asked respondents to rate their satisfaction with Dearborn County Parks, overall respondents are satisfied with the condition of the parks.

Figure 14. Are you overall satisfied with the quality of parks in Dearborn County?	Count
Very Satisfied	14
Satisfied	85
Dissatisfied	15
Very Dissatisfied	0

Question 14. Asked respondents to rate their satisfaction with Dearborn County Parks compared to ten years ago, respondents believe parks have improved compared to 10 years ago.

Figure 15. How does the quality of parks compare to 10 years ago?	Count
Much Better	25
Somewhat Better	59
About the Same	25
Somewhat Worse	4
Much Worse	1

Question 15. Asked respondents what improvements should Dearborn County Parks make, goals to achieve, or objectives or policies to include for the future of the County parks system. There were 11 comments referencing the need for improved maintenance whether that was a need for weed eating, managing ponds for algae, clearing debris from hiking trails, or better maintaining existing paved trails. There were 10 comments wanting some sort of splash pad or pool to be offered by Dearborn County Parks, this was the second most common request. The third most common improvement was for the County to acquire more land/greenspace, with 7

people commenting similar ideas. Other notable improvements with more than one individual commenting the same things are: Addressing Bright Meadows Parking (4), increase paved trails (5), improve security (2), add playgrounds (4), increase unpaved trails (4), more horse trails (3), host more events (2), improve fishing (4), and enclose Bright Playground (2). The responses are shown in italics below:

Acquire a lot of land while you can. Protect the rural landscape.

Additional non-grass walkways and paths would be a benefit to those who have environmental skin allergies; however, would like to enjoy the fresh air, natural view, and sunlight from being outside. This would also benefit those who require wheeled mobility assistance. It would be a benefit if every park could have an area that is safe for toddlers to play.

Security of some sort. Arch street park get graffiti frequently and often find teenagers making out in Guilford after school when trying to play with my little ones.

More swings.

Increase amount of paved and unpaved trails.

Additional playgrounds and shelters.

Splash Park

More horseback trails, volunteers to maintain.

Walking paths should be wider and better maintained.

Have more events at parks Bright Park is a large area that never has events or gatherings.

Keep doing what you're doing.

Would like to see more improvements made at County Farm Park for the shooting ranges. Shelters need work and additional built and power placed to the building.

Restrooms and pickleball courts.

Would love to see Bright Meadows Park purchase Bright Four Seasons and expand the park.

Start by cleaning up the ponds at Gladys Russell and Rullman.

Clean the lakes at Rullman and Gladys Russell. Trail at Rullman has trees crossing the trail making it harder for people to walk the trail and the trail is overgrown making it harder to know where the path is.

Keep the parks wilder instead of developing with game courts etc.

Is there an appointment I could use to help me find the parks and a map of the walking/hiking trails? I didn't know what they have/offer.

Develop parks closer. Develop parks in Northern Dearborn County.

Make trails better in each park. Maybe a spot that is safe and paved for stargazing.

Kayaking and camping areas.

More awareness. Quality over quantity.

Horse trails

Maintain them once here.

Signage for trails, and activities that are allowed to do at each park would be nice to have on a sign at each park.

Expand water-based recreation with water launches, river overlooks, and fishing docks. Create family-centered amenities-splash pads, inclusive playgrounds, shaded picnic areas. Continue to upgrade existing park facilities and help build up, specifically, North Dearborn Community Park.

Pond treatment program. I think when the county cuts grass at the parks with walking or hiking trails, those trails should be inspected for fallen trees. I would be more than happy to assist in keeping these parks beautiful and functional.

Preserve natural spaces

Security

Better parking

Horse trails

More focus on athletic facilities and supporting organizations that use them

The more natural playground areas along with the splash pad. Also, a fence around the playground would be ideal for kid not to escape/elope.

Wider walking trails

More things to do as a community

Splash parks

The Bright Meadows Park is often inaccessible due to the sports teams practicing or playing games. We have an adult grandson who rides his bike and shoots baskets. We try to go when it is cool enough for him to be comfortable. The basketball court was taken over by the pickleball

court and the baskets moved down into parking spots. People don't see, to see or care that the baskets are there. Even when there aren't crowds for the kids' games and practices, people still park under them. Of course, there is no place for when grandson to ride his bike when there are crowds. He can't ride in the street because he does not know how to watch for traffic.

Community pool near Bright, Logan, Guilford.

Parking lot at Bright Meadows gets so tight when sports are going on. The parking lot located near Stateline Road also the restrooms and gates aren't open in early March. Nice days when families want to access park for baseball practice.

Community pool

Maintain the ground, more kids' areas.

Splash pad, more playgrounds

Updates and new attractions

Acquire more green spaces; other states have/support land trusts that are available for residents to hike, fish, canoe on lakes, etc.

More family friendly areas- playgrounds (with shaded awnings), splash pads, paved paths, maps of hiking paths with distances, and library story walks for kiddos.

The walking trail at Bright is awful with the hill. Needs retention wall built and levelled. The parking is awful when sports are playing. Overcrowded. Playground was poorly designed and placed in wrong location. Needs moved away from the road. Wood chips need removed. Expansion needed. Gated.

Upkeep on playgrounds. More attractions as far as things to pull people into the county and spend more money.

We desperately need more pools in the area with a way for children to get swim lessons.

Splash pad in Bright.

We really need a bowhunting program similar to Hamilton County. We also need to acquire more land and build more multi-use trail systems.

Ask disabled residents for their input on accessibility. Ask parents of young children about safety needs and equipment accessibility. Provide equipment that is light in paint color to reflect sun not absorb it.

Parking at Bright Meadows with the large number of peewee football teams that use it all at once all fall is horrible. No one can use the park during this time. They park on top of pickleball

courts and everywhere in the grass. Park cannot accommodate that volume. Sometimes they park on Einsel making it a one way which is ridiculous with the volume of traffic. I live back this road and hate that time of year in evenings at the park. Makes me wish I didn't live by it. Certainly, does nothing to obtain mission statement. Neighbor nuisance!

Well maintained walking/running trails, splash pad

Get pools

I know the Guilford Covered Bridge Park could use a regular landscaping company.

Bright meadows need the walking trail repaved. It sits too low and gets covered with water and ice in winter.

Enclosing Bright playground (makes me nervous right next to parking lot with young kids)

More activities for kids and teenagers.

Liberty Park in Batesville hosts festivals, gatherings, and craft shows plus has an amazing playground and lots of parking. Our family loves that park but would prefer to not have to the county if something similar were available in Dearborn County. Hiking trails would be very much welcome as well! Many of our friends have mentioned a desire for closer hiking which is very popular with millennial and Gen Z families.

It varies from one park to the next. We used to frequent Bright Park, and would probably visit Gladys Russell more often, but it doesn't seem as well maintained. Longer trails and more activities would be nice.

Keep cleaner. Well mowed and weed eater. Restrooms available and drinking fountains. Keep paved walking paths clear and sealed.

Question 15. Asked respondents we would appreciate any other comments you may have related to the Dearborn County Parks and this master plan process. Comments are shown in italics below:

Build up assets to promote volume usage and protection.

All parks should include the following; no matter which other features are provided: Clean, plenty of lighting, sheltered area, restroom, groomed grounds, paths/walkways, interactive structures, healthy nature growth.

Move recycling bins and dumpster to back lots.

Move Rumpke cans please!

I've been very happy with the parks in the area since moving to Dearborn County and starting a family.

Please include more horseback trails.

Red Elk Trail at Rullman has trees down across the trail making it harder for people to walk and trail is overgrown making it difficult to stay on the path unless you've walked it enough.

Are there any swimming holes that could be used? Someplace maybe not crowded for families with children to splash around? Float?

I love going to the parks but would love to see the county farm park return the trail that a scout made in the early 2000s would love to follow the trails but no access as it is overgrown. My husband and I enjoy watching the deer at that park and love the pond at Rullman's and Gladys Russell.

Would love to see some areas where dispersed camping and kayaking were an option.

Horse trails.

Keep up the good work, I feel our parks are great. They are parks, we don't need to make them a circus.

I have lived in Dearborn County since 1990 and I was only aware of the Bright Meadows Park in the last couple of years through the Bright Area Business Association. I had been to the Guilford Covered Bridge Park once because I stopped when I was driving through the area. I am not sure how the information can be distributed, but I love nature and would have visited all the parks though out the years had I known. I did not seek more information through tourism or other means because Miami Whitewater and Brookville Lake are convenient, and accessible. I live in Dearborn within walking distance to the Franklin and Hamilton County boundaries.

Well maintained facilities, garbage cans emptied regularly and poison ivy kept away from trails are important.

I wish the skatepark was more active, I grew up going there in the early 2000s and it is some of my favorite memories

Please add horse trails.

Splash pad for kids and more kid and family programs and activities.

Love the splash pad idea.

Make sure to keep some nature walk areas.

Keep up the great work. Thank you to everyone who is trying to improve our community.

Some level of investment in the North Dearborn Park Development would be nice due to the growth of new homes and families in the area.

The parks have improved drastically since I was a kid! I look forward to continued improvements and development of our local parks!

Please consider adding a bowhunting programs similar to Hamilton County. To meet the mission, we really need to acquire more land. I would love to see this happen. I think we need more greenspace in general in Dearborn County. Land is becoming more and more expensive and we are losing green space to development. I'd love to see us become more aggressive about seeking funding and being creative about land acquisition. We have very beautiful areas that could greatly increase quality of life in Dearborn County.

Post a monthly update on all feedback and planning

I would love to see Bright Meadows be a natural park instead of a peewee football facility for a few months each year.

Need water play areas A POOL

We love Bright Park would love to see it continue to grow

Better marketing to promote awareness of parks. We've lived here since 2014 and didn't know there were 5 parks in the county.

Sand volleyball, baseball diamonds, open and flat fields near shelters would be nice.

Final Draft